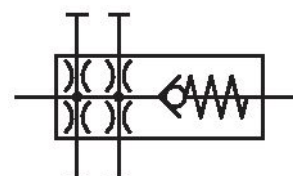


Distributor, Series AS3-DIN

R412007254

General series information Series AS3

- The AVENTICS Series AS3 is a modular, versatile maintenance unit for universal application. This Series offers compact dimensions, is highly efficient, lightweight and easy-to-use. The AVENTICS Series AS guarantees reliability, safety, and efficiency with a simplified assembly and maintenance efforts.



Technical data

Industry
Industrial

Type
Non-return valve

Type
Can be assembled into blocks

Parts
Distributor

Mounting orientation
Any

Port
G 3/8

Version
Distributor 4x

Working pressure min.
0.4 bar

Working pressure max
16 bar

Min. ambient temperature
-10 °C

Max. ambient temperature
50 °C

Medium
Compressed air
Neutral gases

Nominal flow Qn
5100 l/min

Nominal flow Qn 1 to 2
5100 l/min

Nominal flow 1 # 3
3300 l/min

Nominal flow Qn 1 to 4
2250 l/min

Nominal flow 1 # 5
2250 l/min

Nominal flow 1 # 6
2250 l/min

Weight
0.32 kg

Housing material
Polyamide

Material front plate
Acrylonitrile butadiene styrene

Seal material
Acrylonitrile butadiene rubber

Material threaded bushing
Die cast zinc
R412007254

Technical information

The pressure dew point must be at least 15 °C under ambient and medium temperature and may not exceed 3 °C .

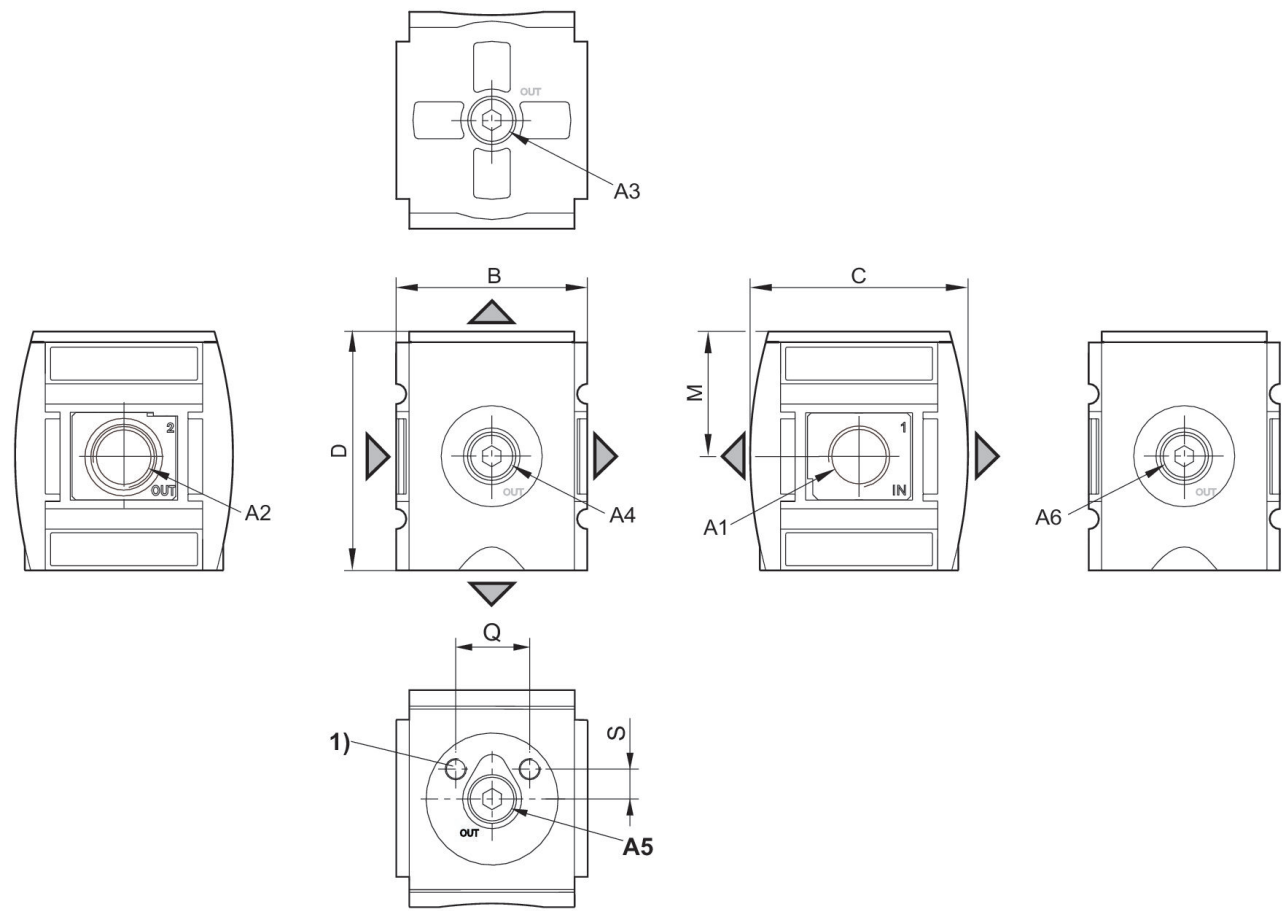
Suitable for direct mounting of a PE2 and PM1 series pressure sensor (flange version).

Nominal flow Q_n with secondary pressure $p_2 = 6$ bar at $\Delta p = 1$ bar

A change in the flow direction (from air supply on the left to air supply on the right) occurs by rotating installation by 180° about the vertical axis. Please see the operating instructions for further details.

4 auxiliary air exits upstream of non-return valve.

Dimensions



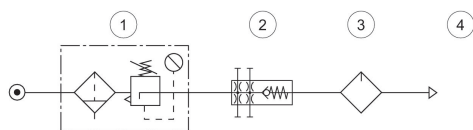
A1 = input A2 = output A3 = output A4 = output A5 = output A6 = output
1) Mounting thread for pressure sensor

Dimensions in mm

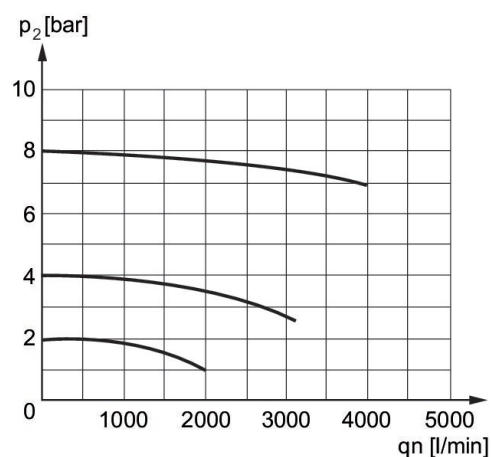
Part No.	A1	A2	A3	A4	A5	A6	B	C	D
R412007254	G 3/8	G 3/8	G 1/2	G 3/8	G 1/4	G 3/8	63	74	80
R412007255	G 1/2	G 1/2	G 1/2	G 3/8	G 1/4	G 3/8	63	74	80

Part No.	M	Q
R412007254	42.5	20
R412007255	42.5	20

usage

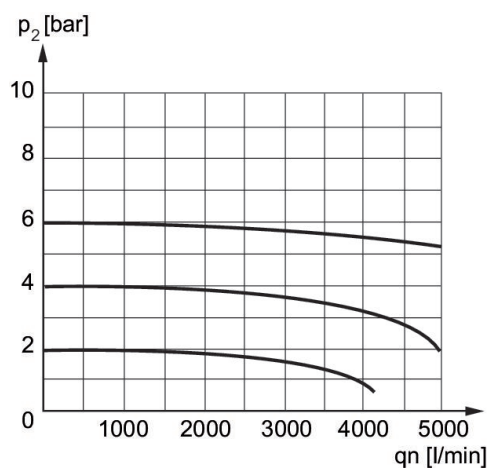


- 1) Filter pressure regulator
- 2) Non-return valve
- 3) Lubricator
- 4) Compressed air



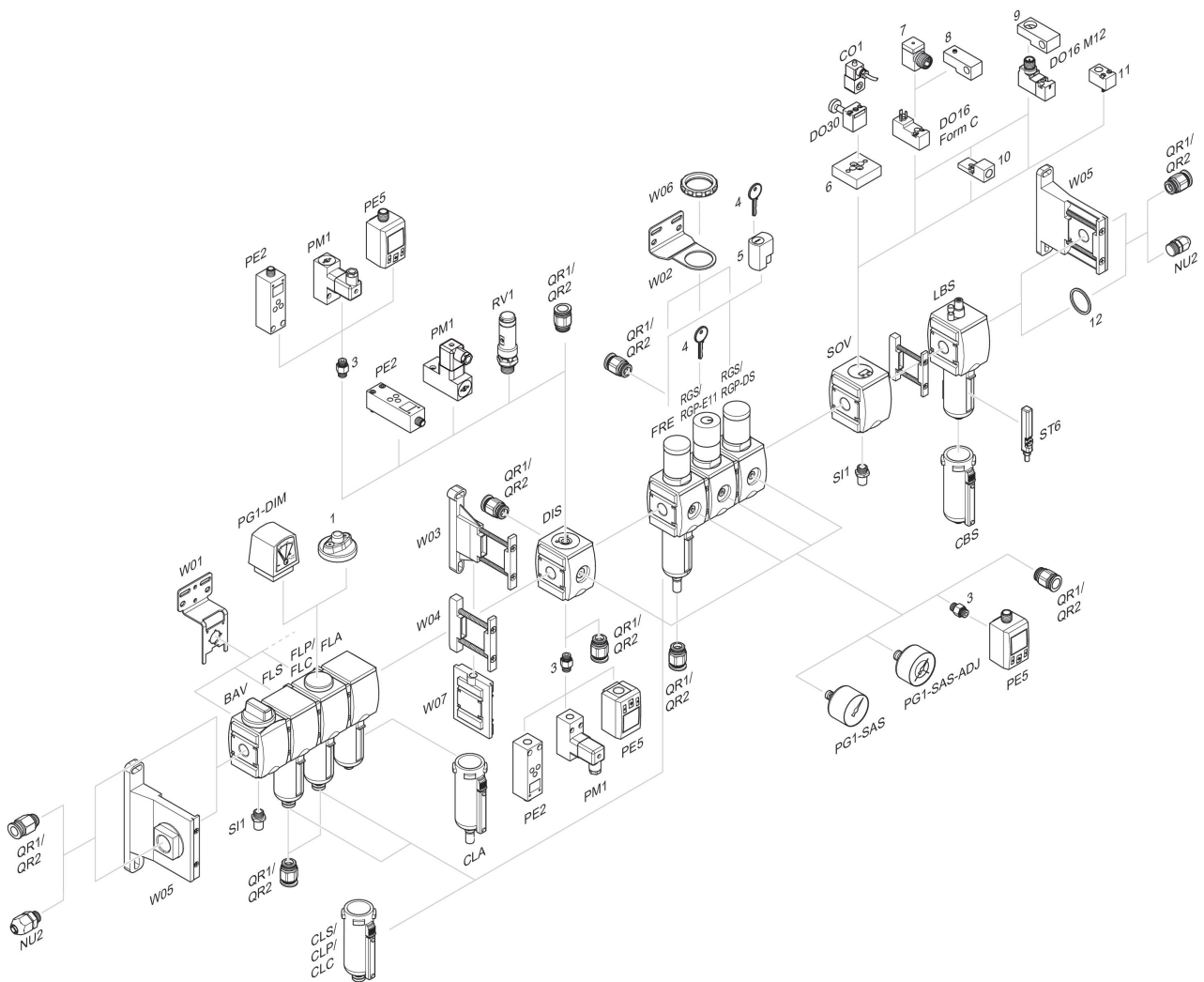
Nominal flow 1 > 3
p2 = secondary pressure qn = nominal flow

Flow rate characteristic, p2 = 0,05 - 7 bar



Nominal flow Qn 1 to 2
p2 = secondary pressure qn = nominal flow

Accessories overview



1 = contamination display 3 = Double nipple 4 = Key for E11 locking 5 = mortise lock 6 = Transition plate DO30 7 = Adapter, Series CON-VP 8 = Mounting aid DO16, form C 9 = Mounting aid DO16, M12 10 = Adapter for external pilot air 11 = Adapter pneumatic operation 12 = Sealing ring