


The Timken Company

4500 Mt Pleasant St. NW

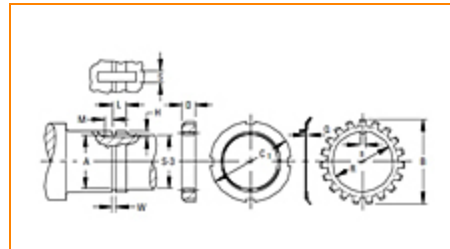
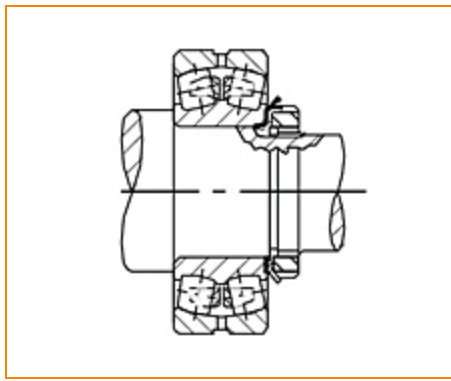
N. Canton, OH 44720

Phone: (234) 262-3000

E-Mail: CustomerCAD@timken.com • **Web site:** www.timken.com

Part Number N 14-W 14, Inch Accessories - Locknut and Lockwasher

- The chart below shows dimensions for locknuts and lockwashers used in the mounting of straight bore bearings on shafts.
- Other dimensions and tolerances related to shaft configurations are also shown.
- Dimensions are presented according to bearing bore size and are applicable to bearings in the various series (e.g., 222 and 223 etc.).



[Specifications](#) | [Threads](#) | [Shaft](#) | [Locknut](#) | [Lockwasher](#)

Specifications

Bearing Bore	70 mm
Locknut	N 14
Lockwasher	W 14

Threads

Major Diameter	69.88 mm 2.751 in
Threads No. per Inch	18



Shaft

Relief Diameter A	67.87 mm 2.672 in
Diameter S-3	66.68 mm 2.625 in
W¹	3.58 mm 0.141 in
L²	13.49 mm 0.531 in
H³	3.2 mm 0.125 in
S⁴	7.92 mm 0.312 in
M⁵	6.35 mm 0.25 in

Locknut

C₁	92.2 mm 3.63 in
D	14.55 mm 0.573 in

Lockwasher

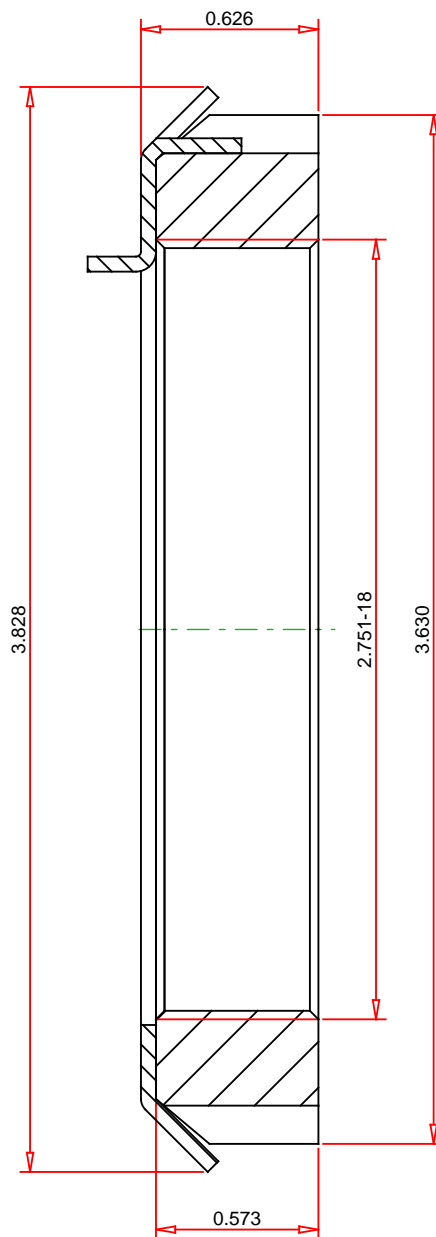
Q	1.35 mm 0.053 in
R	70.89 mm 2.791 in
B	97.23 mm 3.828 in

S

7.37 mm

0.29 in

¹ Tolerance -0 to + 0.4 mm (-0 to +1/64 in)² Tolerance -0 to + 0.4 mm (-0 to +1/64 in)³ Tolerance -0 to + 0.4 mm (-0 to +1/64 in)⁴ Tolerance -0 to + 0.4 mm (-0 to +1/64 in)⁵ Tolerance -0 to + 0.4 mm (-0 to +1/64 in)



IMPERIAL UNITS

TIMKEN®

THE TIMKEN COMPANY
NORTH CANTON, OHIO USA

N 14-W 14
Inch Accessories - Locknut and Lockwasher