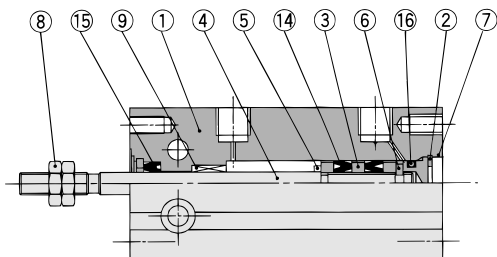
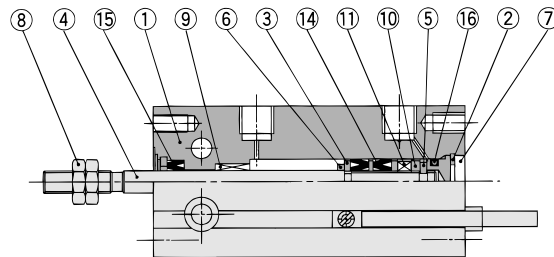


## Construction

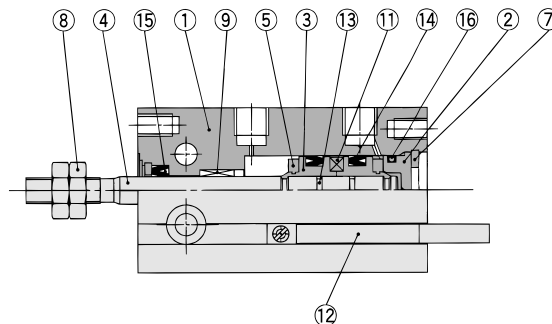
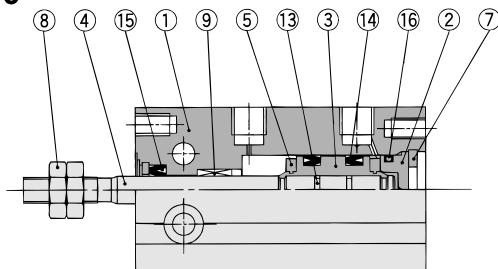
ø6



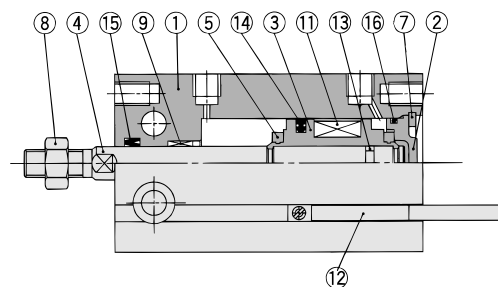
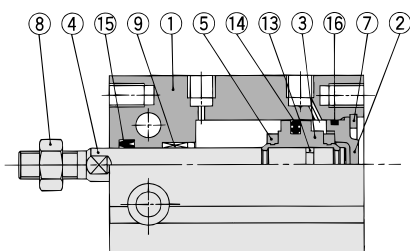
With auto switch



ø10



ø16 to ø32



### Component Parts

| No. | Description    | Material          | Note                                 |
|-----|----------------|-------------------|--------------------------------------|
| 1   | Cylinder tube  | Aluminum alloy    | Hard anodized                        |
| 2   | Head cover     | Brass             | ø6 to ø10, Electroless nickel plated |
|     |                | Aluminum alloy    | ø16 to ø32, Chromated                |
| 3   | Piston         | Brass             | ø6 to ø10                            |
|     |                | Aluminum alloy    | ø16 to ø32, Chromated                |
| 4   | Piston rod     | Stainless steel   |                                      |
| 5   | Bumper A       | Urethane          |                                      |
| 6   | Bumper B       | Urethane          |                                      |
| 7   | Retaining ring | Carbon tool steel | Phosphate coated                     |

### Component Parts

| No. | Description   | Material                       | Note          |
|-----|---------------|--------------------------------|---------------|
| 8   | Rod end nut   | Carbon steel                   | Nickel plated |
| 9   | Bushing       | Oil-impregnated sintered alloy |               |
| 10  | Magnet holder | Brass                          | ø6            |
| 11  | Magnet        | —                              |               |
| 12  | Auto switch   | —                              |               |
| 13  | Piston gasket | NBR                            |               |
| 14* | Piston seal   |                                |               |
| 15* | Rod seal      |                                |               |
| 16* | Gasket        |                                |               |

### Replacement Parts: Seal Kit

| Bore size (mm) | Kit no.  | Contents                     |
|----------------|----------|------------------------------|
| 10             | CU10D-PS | Set of nos. above 14, 15, 16 |
| 16             | CU16D-PS |                              |
| 20             | CU20D-PS |                              |
| 25             | CU25D-PS |                              |
| 32             | CU32D-PS |                              |



\* Seal kit includes 14, 15, 16. Order the seal kit, based on each bore size.

\* Seal kit includes a grease pack (10 g).

Order with the following part number when only the grease pack is needed.

Grease pack part number: GR-S-010 (10 g)