



**The Timken Company**

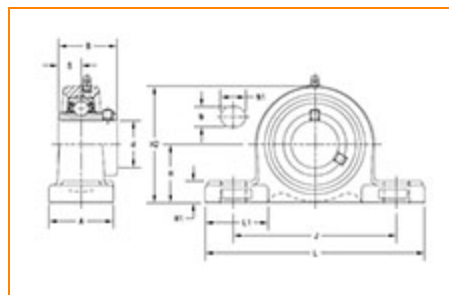
4500 Mt Pleasant St. NW

N. Canton, OH 44720

Phone: (234) 262-3000

E-Mail: [CustomerCAD@timken.com](mailto:CustomerCAD@timken.com) • Web site: [www.timken.com](http://www.timken.com)

## Part Number UCP209, UCP 200 Pillow Block Housed Units - Set Screw Locking



[Specifications](#) | [Dimensions](#) | [Basic Load Ratings](#)

### Specifications

Bearing Number	UC209
Shaft Size d	45 mm
Weight	4.9 lb 2.20 Kg
UPC Code	087796072190
Locking Style	Set Screw Locking
Housing Construction	Two-Bolt Pillow Block

### Dimensions

Base to Center Height H	54.00 mm 2.126 in
Total Length L	190.00 mm 7.480 in
Housing Width A	54.00 mm 2.126 in

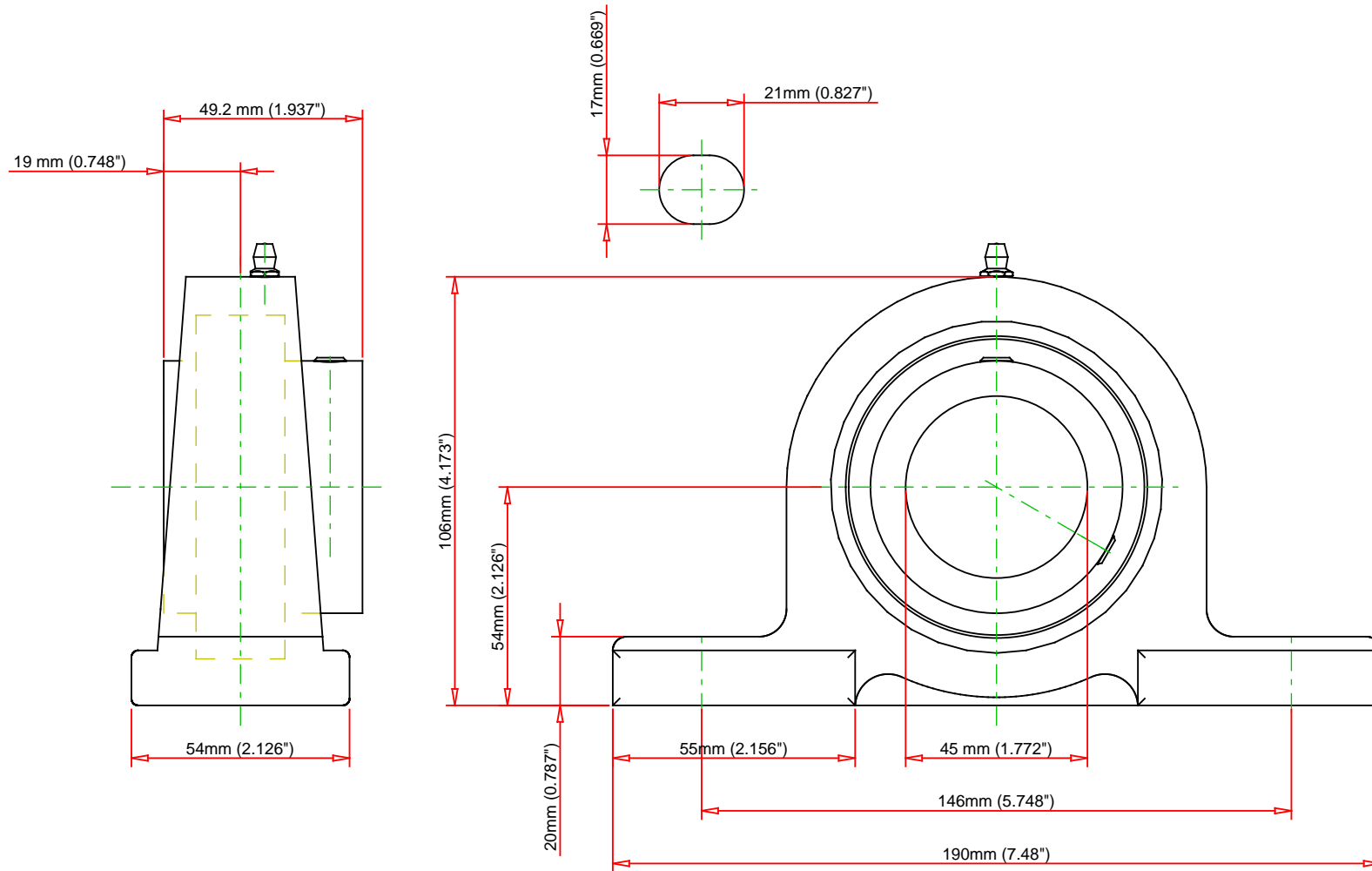
2.120 in

<b>Bolt Hole Spacing J</b>	146.00 mm 5.748 in
<b>Bolt Hole Size N</b>	17.00 mm 0.669 in
<b>Bolt Hole Length N1</b>	21.00 mm 0.827 in
<b>Foot Height H1</b>	20.00 mm
<b>Total Height H2</b>	106.00 mm 4.173 in
<b>Dimension L1</b>	55.00 mm 2.156 in
<b>Inner Ring Width B</b>	49.20 mm 1.937 in
<b>Center of Bearing from End S</b>	19 mm 0.748 in

## Basic Load Ratings

—

<b>Static Load Rating</b>	4788 lbf 21300 N
<b>Dynamic Load Rating</b>	7666 lbf 34100 N



Bearing Number	UC209			
Load Ratings - C <sub>r</sub>	7666	lbf	34100	N
Load Ratings - C <sub>0r</sub>	4788	lbf	21300	N
Weight	4.9	lb	2.2	kg
Bolt Size	M14			

**TIMKEN**

THE TIMKEN COMPANY  
NORTH CANTON, OHIO USA

**UCP209**

UCP 200 Pillow Block Housing Units - Set  
Screw Locking

Every reasonable effort has been made to ensure the accuracy of the information contained in this writing, but no liability is accepted for errors, omissions or for any other reason.

**FOR DISCUSSION ONLY**