

# Dual Rod Cylinder Basic Type

## Series CXS

ø6, ø10, ø15, ø20, ø25, ø32

### How to Order

**Thread type**

Symbol	Type	Bore size
Nil	M thread	ø6 to ø20
	Rc 1/8	
TN	NPT 1/8	ø25, ø32
TF	G 1/8	

**Bearing type**

M	Slide bearing
L	Ball bushing bearing

**Bore size/Stroke (mm)**

Bore size	Standard stroke (mm)
6	10, 20, 30, 40, 50
10	10, 15, 20, 25, 30, 35, 40, 45, 50, 60, 70, 75
15, 20, 25, 32	10, 15, 20, 25, 30, 35, 40, 45, 50, 60, 70, 75, 80, 90, 100

**Auto switch**

Nil	Without auto switch (Built-in magnet)
-----	---------------------------------------

\* For the applicable auto switch model, refer to the table below.

**Number of auto switches**

Nil	2 pcs.
S	1 pc.
n	"n" pcs.

**Made to Order**  
Refer to page 562 for details.

**Example:** CXS M 20 - 100 - Y7BW

### Applicable Auto Switch/Refer to pages 1719 to 1827 for further information on auto switches.

Type	Special function	Electrical entry	Indicator light	Wiring (Output)	Load voltage			Auto switch model		Lead wire length (m) *			Pre-wired connector	Applicable load	
					DC	AC			Perpendicular	In-line	0.5 (Nil)	3 (L)		5 (Z)	
Solid state switch	—	Grommet	Yes	3-wire (NPN)	24 V	5 V, 12 V	—	Y69A	Y59A	●	●	○	○	IC circuit	Relay, PLC
				3-wire (PNP)		Y7PV		Y7P	●	●	○	○			
				2-wire		12 V		Y69B	Y59B	●	●	○	○		
	Diagnostic indication (2-color indication)			3-wire (NPN)	5 V, 12 V	Y7NWV		Y7NW	●	●	○	○	IC circuit		
				3-wire (PNP)		Y7PWV		Y7PW	●	●	○	○			
				2-wire		12 V		Y7BWV	Y7BW	●	●	○		○	
	Water resistant (2-color indication)			—	Y7BA	—		●	○	○	○	—			
Reed switch	—	Grommet	Yes	3-wire (NPN equivalent)	—	5 V	—	Z76	●	●	—	—	IC circuit	—	
				2-wire	24 V	12 V	100 V	—	Z73	●	●	●	—	—	Relay, PLC
						100 V or less	—	Z80	●	●	—	—	IC circuit		

\* Lead wire length symbols: 0.5 m ..... Nil (Example) Y59A  
 3 m ..... L (Example) Y59AL  
 5 m ..... Z (Example) Y59AZ

\* Solid state auto switches marked with "○" are produced upon receipt of order.

- Since there are other applicable auto switches than listed, refer to page 569 for details.
- For details about auto switches with pre-wired connector, refer to pages 1784 and 1785.
- Auto switches are shipped together (not assembled).

CX2

CXW

CXT

CXSJ

CXS

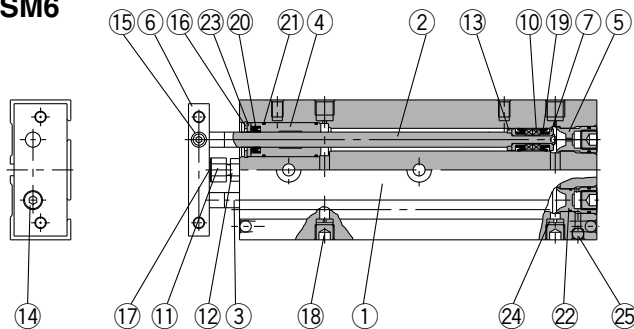
D-□

-X□

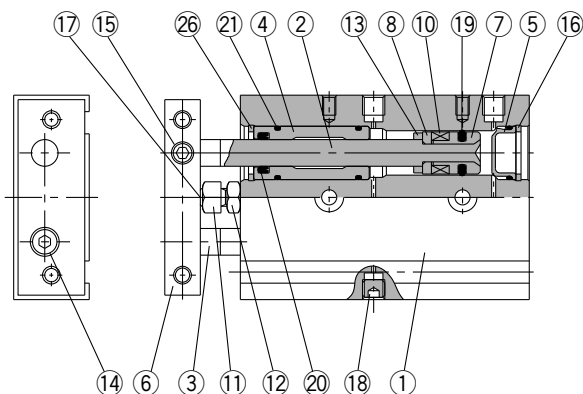
Individual  
-X□

## Construction: Slide Bearing

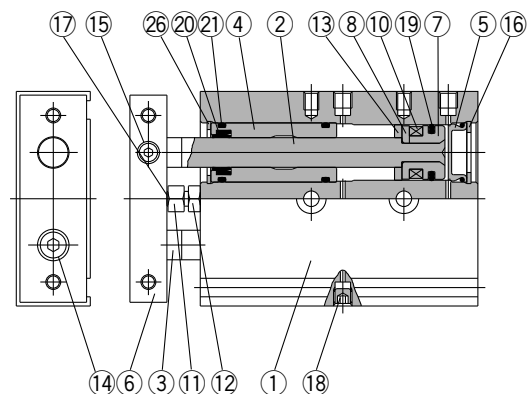
**CXSM6**



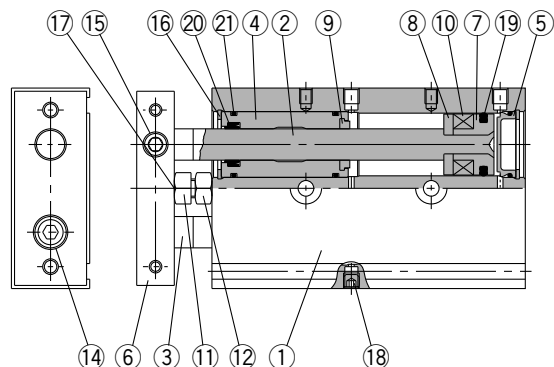
**CXSM10**



**CXSM15**



**CXSM20 to 32**



### Component Parts

No.	Description	Material	Note
1	Housing	Aluminum alloy	Hard anodized
2	Piston rod A	Carbon steel <sup>(1)</sup>	Hard chrome plated
3	Piston rod B	Carbon steel <sup>(1)</sup>	Hard chrome plated
4	Rod cover	Aluminum bearing alloy	
5	Head cover	Special steel <sup>(2)</sup>	
6	Plate	Aluminum alloy	Hard anodized
7	Piston A	Aluminum alloy	Chromated
8	Piston B	Aluminum alloy	Chromated
9	Bumper A	Polyurethane	
10	Magnet	—	
11	Bumper bolt	Carbon steel	Nickel plated
12	Hexagon nut	Carbon steel	Nickel plated
13	Bumper B	Polyurethane	
14	Hexagon socket head cap screw	Chromium steel	Nickel plated
15	Hexagon socket head set screw	Chromium steel	Nickel plated
16	Retaining ring	Special steel	Nickel plated



Note 1) Stainless steel for CXSM6.

Note 2) Anodized aluminum alloy for CXSM6.

### Component Parts

No.	Description	Material	Note
17	Bumper	Polyurethane	
18	Plug	Chromium steel	Nickel plated
19	Piston seal	NBR	
20	Rod seal	NBR	
21	O-ring	NBR	
22	Head cover B	Aluminum alloy	Nickel plated
23	Seal retainer	Aluminum alloy	
24	Port spacer	Aluminum alloy	
25	Steel ball	Special steel	Hard chrome plated
26	Retaining ring B	Special steel	Nickel plated

### Replacement Parts/Seal Kit

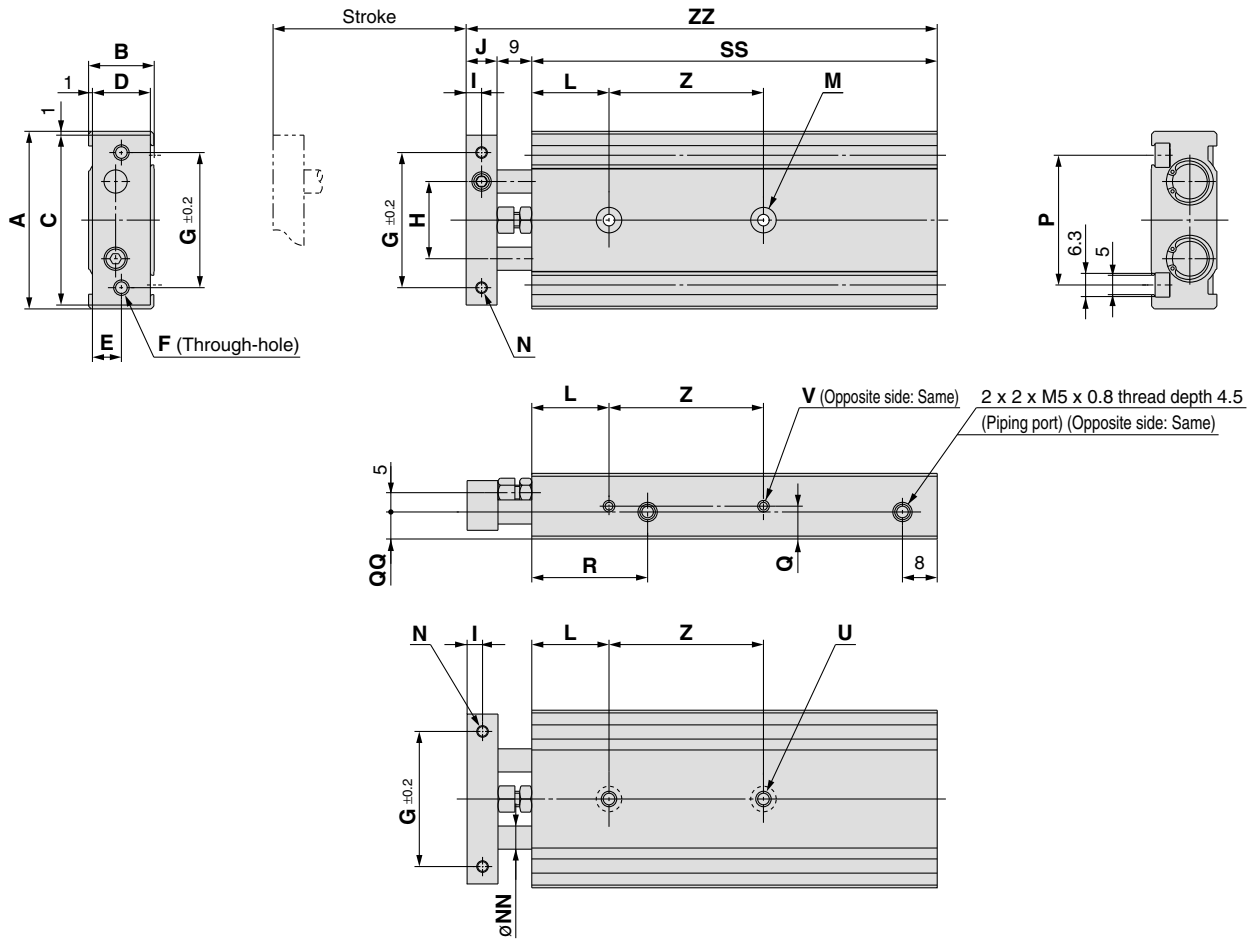
Bore size (mm)	Kit no.	Contents
6	CXSM 6-PS	Set of nos. above 19, 20 and 21
10	CXSM 10 A PS	
15	CXSM 15-PS	
20	CXSM 20-PS	
25	CXSM 25-PS	
32	CXSM 32-PS	

\* Seal kit includes 19, 20 and 21. Order the seal kit, based on each bore size.

\* Since the seal kit does not include a grease pack, order it separately.

Grease pack part no.: GR-S-010 (10 g)

**Dimensions: ø10, ø15**



Model	A	B	C	D	E	F	G	H	I	J	L	M	N	NN	P	Q	QQ	R	U	V
<b>CXS□10</b>	46	17	44	15	7.5	2 x M4 x 0.7	35	20	4	8	20	2 x ø3.4 through 2 x ø6.5 counter- bore depth 3.3	2 x M3 x 0.5 thread depth 5	ø6	33.6	8.5	7	30	2 x M4 x 0.7 thread depth 7	4 x M3 x 0.5 thread depth 4.5
<b>CXS□15</b>	58	20	56	18	9	2 x M5 x 0.8	45	25	5	10	30	2 x ø4.3 through 2 x ø8 counter- bore depth 4.4	2 x M4 x 0.7 thread depth 6	ø8	48	10	10	38.5	2 x M5 x 0.8 thread depth 8	4 x M4 x 0.7 thread depth 5

**Dimensions by Stroke**

Symbol Stroke Model	SS															Z					ZZ														
	10	15	20	25	30	35	40	45	50	60	70	75	80	90	100	10, 15 20, 25	30, 35, 40, 45, 50	60, 70, 75	80	90, 100	10	15	20	25	30	35	40	45	50	60	70	75	80	90	100
CXS□10	65	70	75	80	85	90	95	100	105	115	125	130	—	—	—	30	40	50	—	—	82	87	92	97	102	107	112	117	122	132	142	147	—	—	—
CXS□15	70	75	80	85	90	95	100	105	110	120	130	135	140	150	160	25	35	45	45	55	89	94	99	104	109	114	119	124	129	139	149	154	159	169	179

**CX2**

**CXW**

**CXT**

**CXSJ**

**CXS**

**D-□**

**-X□**

Individual  
**-X□**