

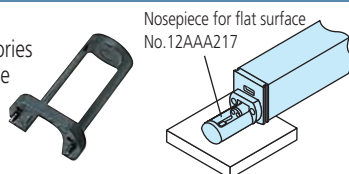
Dimensions: Display Unit and Drive Unit

Drive unit, Display unit

Nosepiece for flat surfaces

No.12AAA217

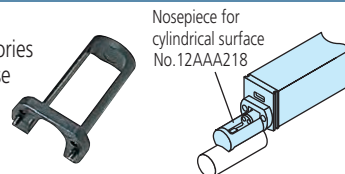
- SJ-310/310R standard accessories
- Not available for the transverse tracing drive unit.



Nosepiece for cylindrical surfaces

No.12AAA218

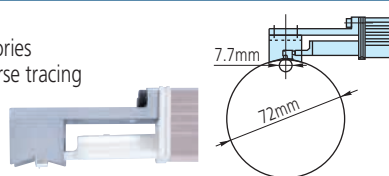
- SJ-310/310R standard accessories
- Not available for the transverse tracing drive unit.
- $\phi 30\text{mm}$ or smaller workpiece.



V-type adapter

No.12AAE644

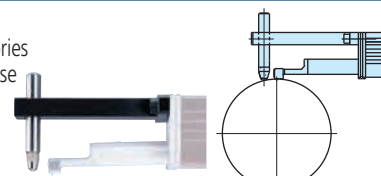
- SJ-310S standard accessories
- Dedicated to the transverse tracing drive unit.



Point-contact adapter

No.12AAE643

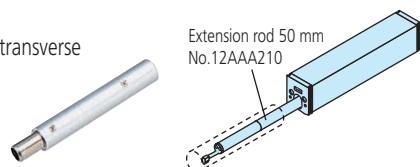
- SJ-310S standard accessories
- Dedicated to the transverse tracing drive unit.



Extension rod (50 mm)

No.12AAA210

- Not available for the transverse tracing drive unit.



Extension cable (1 m)

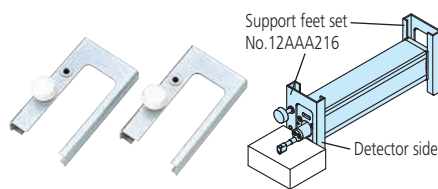
No.12BAA303

- For connecting calculation display unit and drive unit.

Support feet set

No.12AAA216

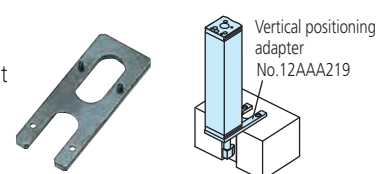
- SJ-310 standard accessory
- Not attachable to the detector side of the transverse tracing drive unit.



Vertical positioning adapter

No.12AAA219

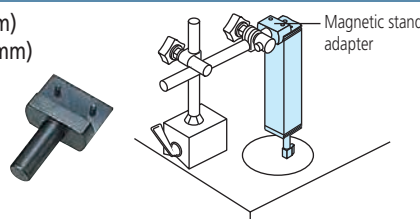
- Not available for the transverse tracing drive unit



Magnetic stand adapter

No.12AAA221($\phi 8\text{mm}$)

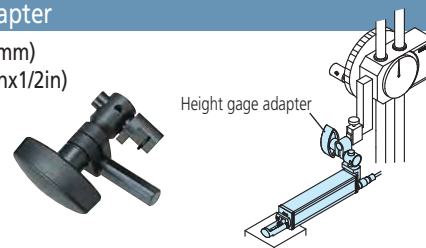
No.12AAA220($\phi 9.5\text{mm}$)



Height gage adapter

No.12AAA222(9x9mm)

No.12AAA233(1/4inx1/2in)



Setting attachments

(Note: Not available for the transverse tracing drive unit)

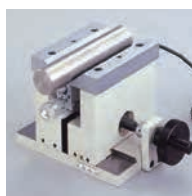
Enhances measurement efficiency by facilitating the measurement setup of multiple workpieces of the same type and of the hard-to-access sections of a workpiece.

V-type for measuring axially

No.178-033

The V-width is adjustable to the cylindrical workpiece diameter, facilitating axial measurement of a wide range workpiece sizes.

- Adjustable range:
 $\phi 5 \sim 150 \text{ mm}$



Slider type

No.178-034

This attachment is ideal for measuring a flat area of a workpiece that has an indentation or step that makes it difficult to attach the drive unit. You can further improve the ease of use by using this attachment with the magnetic installation base (option: No. 12AAA910).



Inside diameter type

No.178-035

Greatly facilitates measurement of internal wall surfaces of, for example, a cylinder block.

- Applicable diameter:
 $\phi 75 \sim \phi 95 \text{ mm}$
- Accessible depth:
 $30 \sim 135 \text{ mm}$

