



The Timken Company

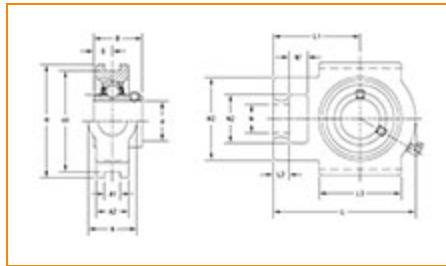
4500 Mt Pleasant St. NW

N. Canton, OH 44720

Phone: (234) 262-3000

E-Mail: CustomerCAD@timken.com • **Web site:** www.timken.com

Part Number UCT312, UCT 300 Take-Up Mounted Bearings - Set Screw Locking



[Specifications](#) | [Dimensions](#) | [Basic Load Ratings](#)

Specifications

Bearing Number	UC312
Shaft Size d	60 mm
Locking Style	Set Screw Locking
Housing Construction	Take-Up

Dimensions

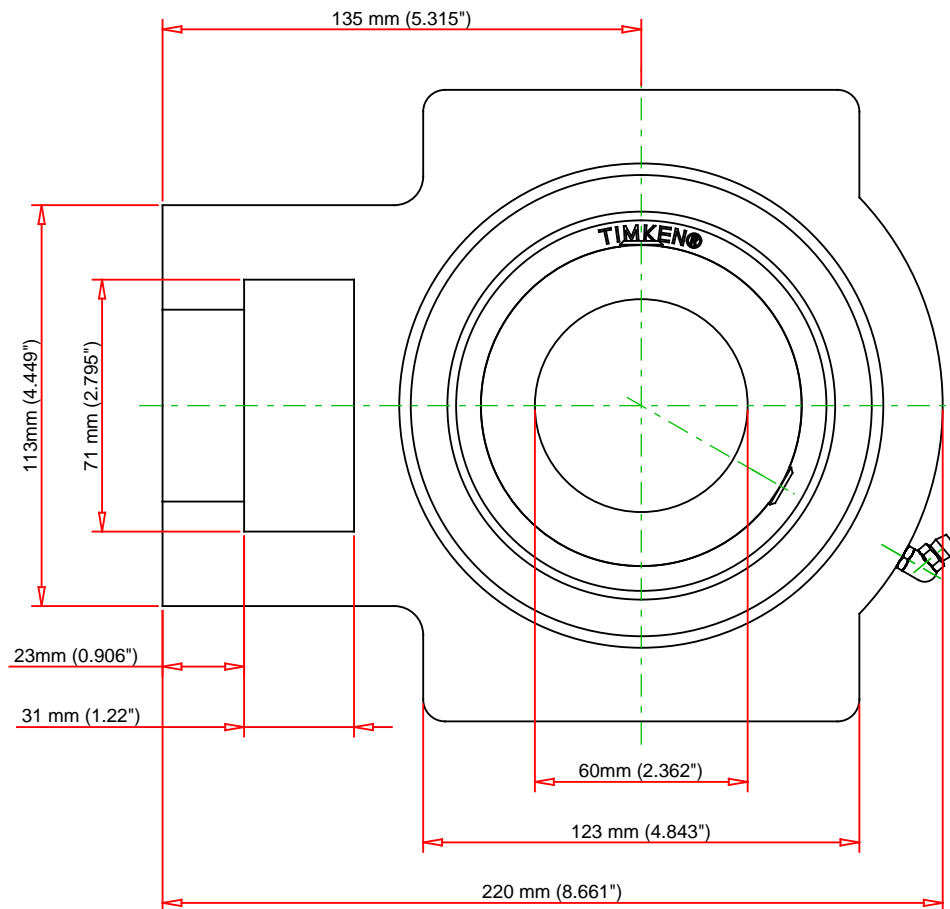
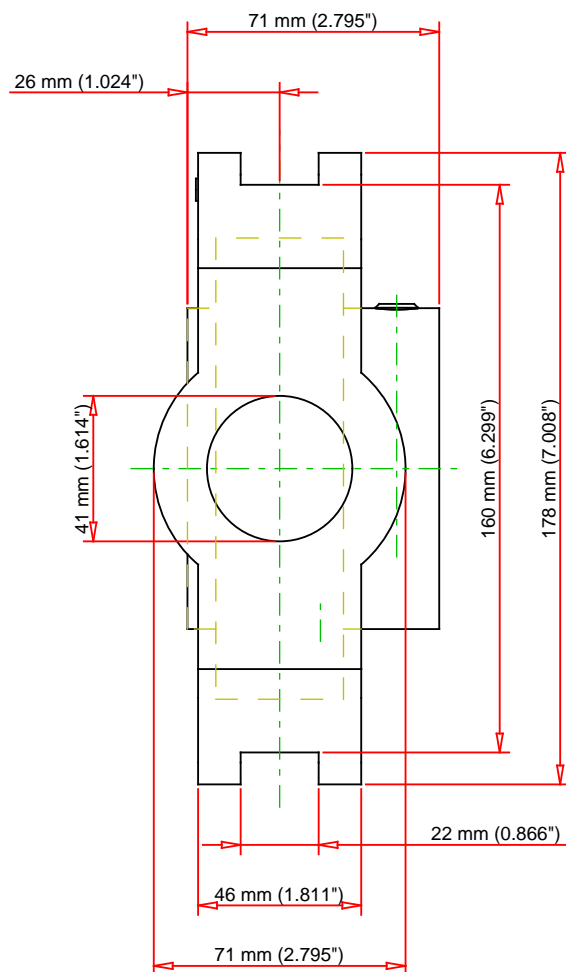
Housing Width A	71 mm 2.795 in
Slot Width A1	22 mm 0.866 in
Slot Width A2	46 mm 1.811 in



Total Height H	178 mm 7.008 in
Pitch Height H1	160 mm
Height H2	113 mm
Total Length L	220 mm 8.661 in
Shaft Length L1	135 mm 5.315 in
Dimension L2	23 mm
Slot Length L3	123 mm 4.843 in
Adjustment Screw Bore N	41 mm 1.614 in
Opening Width N1	31 mm 1.22 in
Opening Height N2	71 mm 2.795 in
Inner Ring Width B	71 mm 2.795 in
Center of Bearing from End S	26 mm 1.024 in
Grease Nipple Size	B-R1/8

Basic Load Ratings

Static Load Rating	52200 N 11735 lbf
Dynamic Load Rating	81900 N 18412 lbf



Bearing Number	UC312			
Load Ratings - C _r	18412	lbf	81900	N
Load Ratings - C _{0r}	11735	lbf	52200	N
Weight	16.8	lb	7.6	kg

TIMKEN

THE TIMKEN COMPANY
NORTH CANTON, OHIO USA

UCT312

UCT 300 Take-Up Mounted Bearings - Set
Screw Locking

Every reasonable effort has been made to ensure the accuracy of the information contained in this writing, but no liability is accepted for errors, omissions or for any other reason.

FOR DISCUSSION ONLY