



The Timken Company

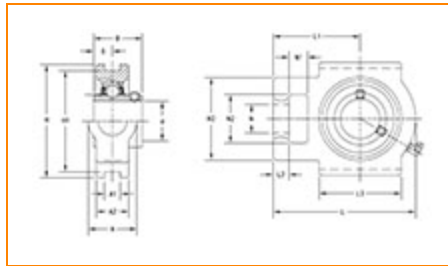
4500 Mt Pleasant St. NW

N. Canton, OH 44720

Phone: (234) 262-3000

E-Mail: CustomerCAD@timken.com • **Web site:** www.timken.com

Part Number UCT311, UCT 300 Take-Up Mounted Bearings - Set Screw Locking



[Specifications](#) | [Dimensions](#) | [Basic Load Ratings](#)

Specifications

Bearing Number	UC311
Shaft Size d	55 mm
Locking Style	Set Screw Locking
Housing Construction	Take-Up

Dimensions

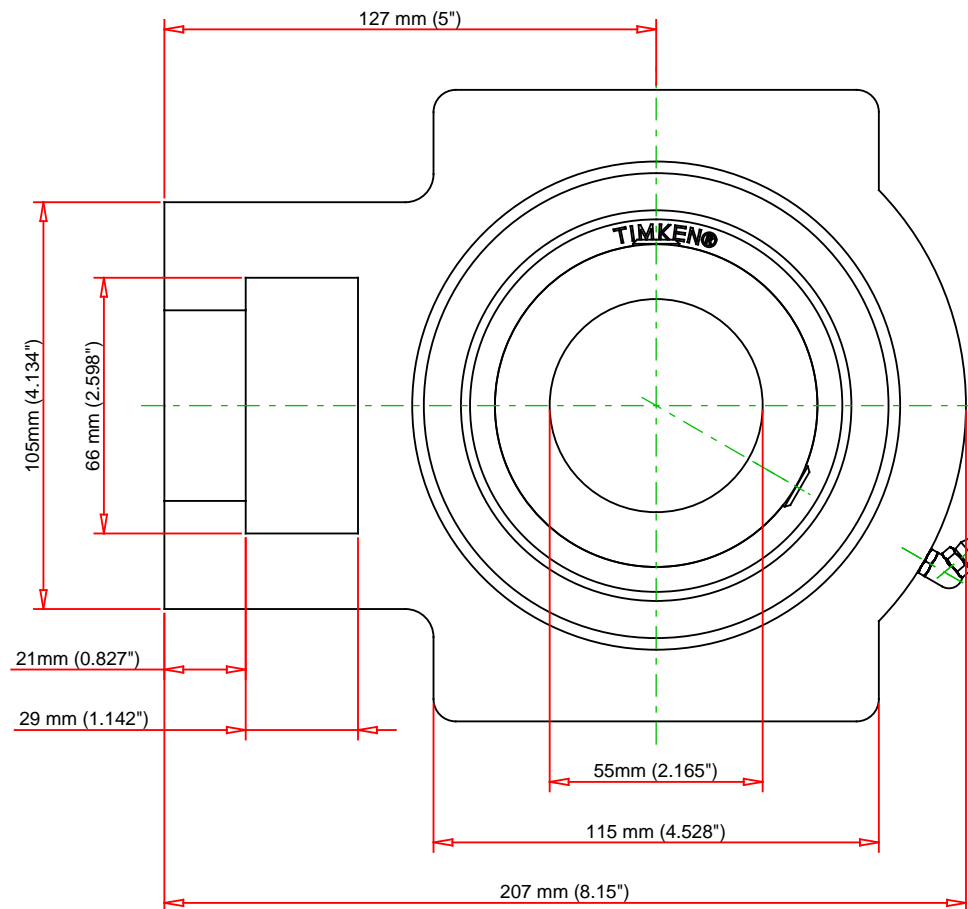
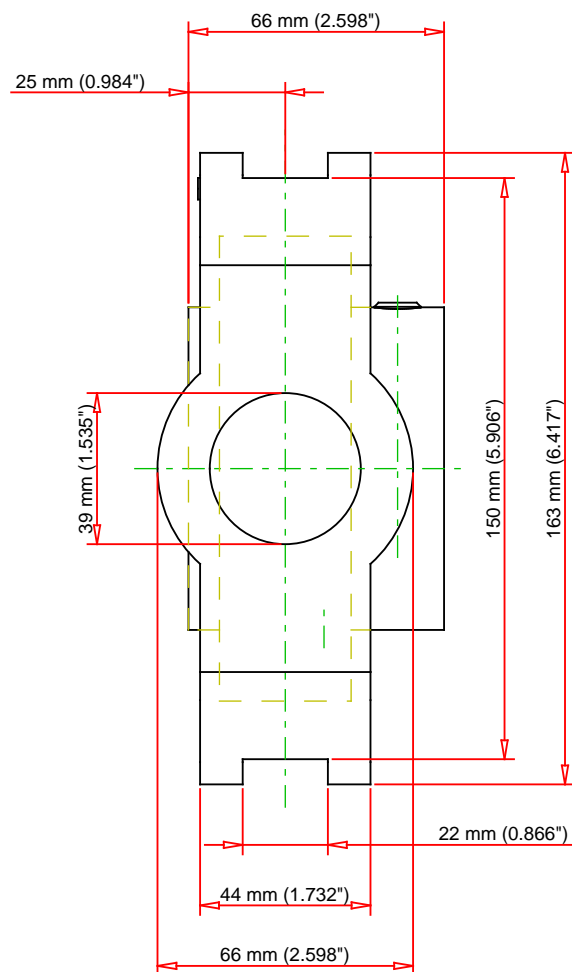
Housing Width A	66 mm
Slot Width A1	22 mm
Socket Width A2	44 mm
Total Height H	163 mm
Pitch Height H1	150 mm



Height H2	105 mm
Total Length L	207 mm
Shaft Length L1	127 mm
Dimension L2	21 mm
Slot Length L3	115 mm
Adjustment Screw Bore N	39 mm
Opening Width N1	29 mm
Opening Height N2	66 mm
Inner Ring Width B	66 mm
Center of Bearing from End S	25 mm
Grease Nipple Size	B-R1/8

Basic Load Ratings

Static Load Rating	45000 N
Dynamic Load Rating	71600 N



Bearing Number	UC311			
Load Ratings - C _r	16096	lbf	71600	N
Load Ratings - C _{0r}	10117	lbf	45000	N
Weight	13.4	lb	6.1	kg

TIMKEN®

THE TIMKEN COMPANY
NORTH CANTON, OHIO USA

UCT311

UCT 300 Take-Up Mounted Bearings - Set
Screw Locking

Every reasonable effort has been made to ensure the accuracy of the information contained in this writing, but no liability is accepted for errors, omissions or for any other reason.

FOR DISCUSSION ONLY