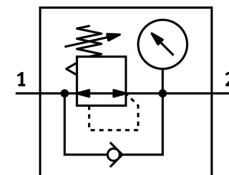
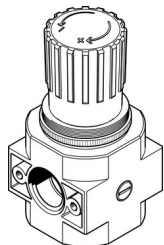


Basic valve LR-D-7-MAXI

Part number: 546465

FESTO



 General operating condition

Data sheet

Feature	Value
Size	Maxi
Series	D
Actuator lock	Rotary knob with detent
Mounting position	optional
Design	Piloted piston regulator
Controller function	Output pressure constant With secondary venting
Symbol	00991558
Pressure gauge (ANALOG) or Pressure display (DIGITAL)	Prepared for G1/4
Operating pressure	0 bar ... 16.547 bar
Pressure regulation range	0.476 bar ... 7.239 bar
Max. pressure hysteresis	0.414 bar
Standard nominal flow rate	47605.93 l/min
Operating medium	Compressed air to ISO 8573-1:2010 [7:4:4] Inert gases
Note on operating and pilot medium	Lubricated operation possible (in which case lubricated operation will always be required)
Corrosion resistance class CRC	2 - Moderate corrosion stress
LABS (PWIS) conformity	VDMA24364-B1/B2-L
Air purity class at output	Compressed air to ISO 8573-1:2010 [7:4:4] Inert gases
Media temperature	-10 °C ... 60 °C
Ambient temperature	-10 °C ... 60 °C
Product weight	1091.475 g
Type of mounting	Front panel mounting In-line installation With accessories
Note on materials	RoHS-compliant
Material seals	NBR
Material housing	Die-cast zinc