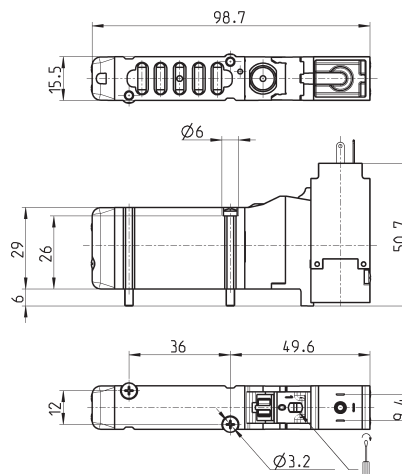
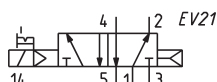


Electropneumatic valve, monostable with outlets on sub-base - s. 16

5/2-way



Connectors at the end of this section



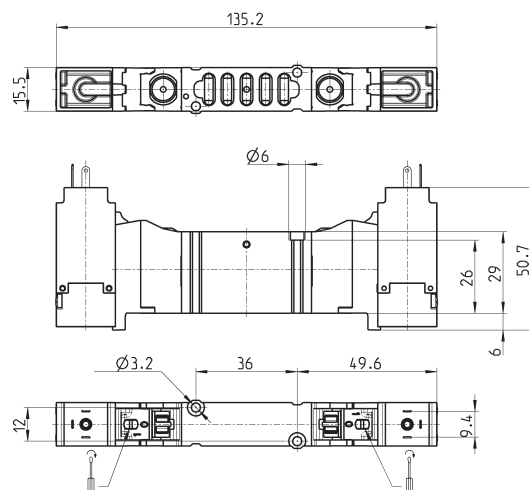
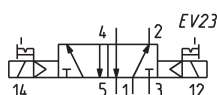
Mod.	Working pressure (bar)	Flow rate (NL/min)
EN530-16-PN..	2,5 ÷ 10	610

Electropneumatic valve, bistable with outlets on sub-base - size 16

5/2-way



Connectors at the end of this section



Mod.	Working pressure (bar)	Flow rate (NL/min)
EN530-11-PN..	2 ÷ 10	610