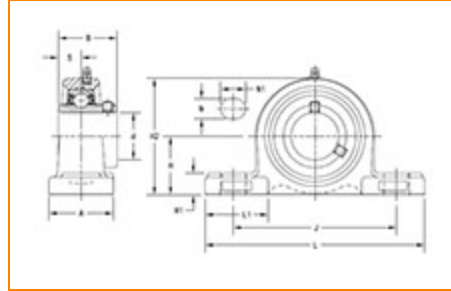




**The Timken Company**  
 4500 Mt Pleasant St. NW  
 N. Canton, OH 44720  
**Phone:** (234) 262-3000

**E-Mail:** [CustomerCAD@timken.com](mailto:CustomerCAD@timken.com) • **Web site:** [www.timken.com](http://www.timken.com)

## Part Number UCP207, UCP 200 Pillow Block Housed Units - Set Screw Locking



[Specifications](#) | [Dimensions](#) | [Basic Load Ratings](#)

### Specifications

<b>Bearing Number</b>	UC207
<b>Shaft Size d</b>	35 mm
<b>Weight</b>	3.5 lb 1.60 Kg
<b>UPC Code</b>	087796072008
<b>Locking Style</b>	Set Screw Locking
<b>Housing Construction</b>	Two-Bolt Pillow Block

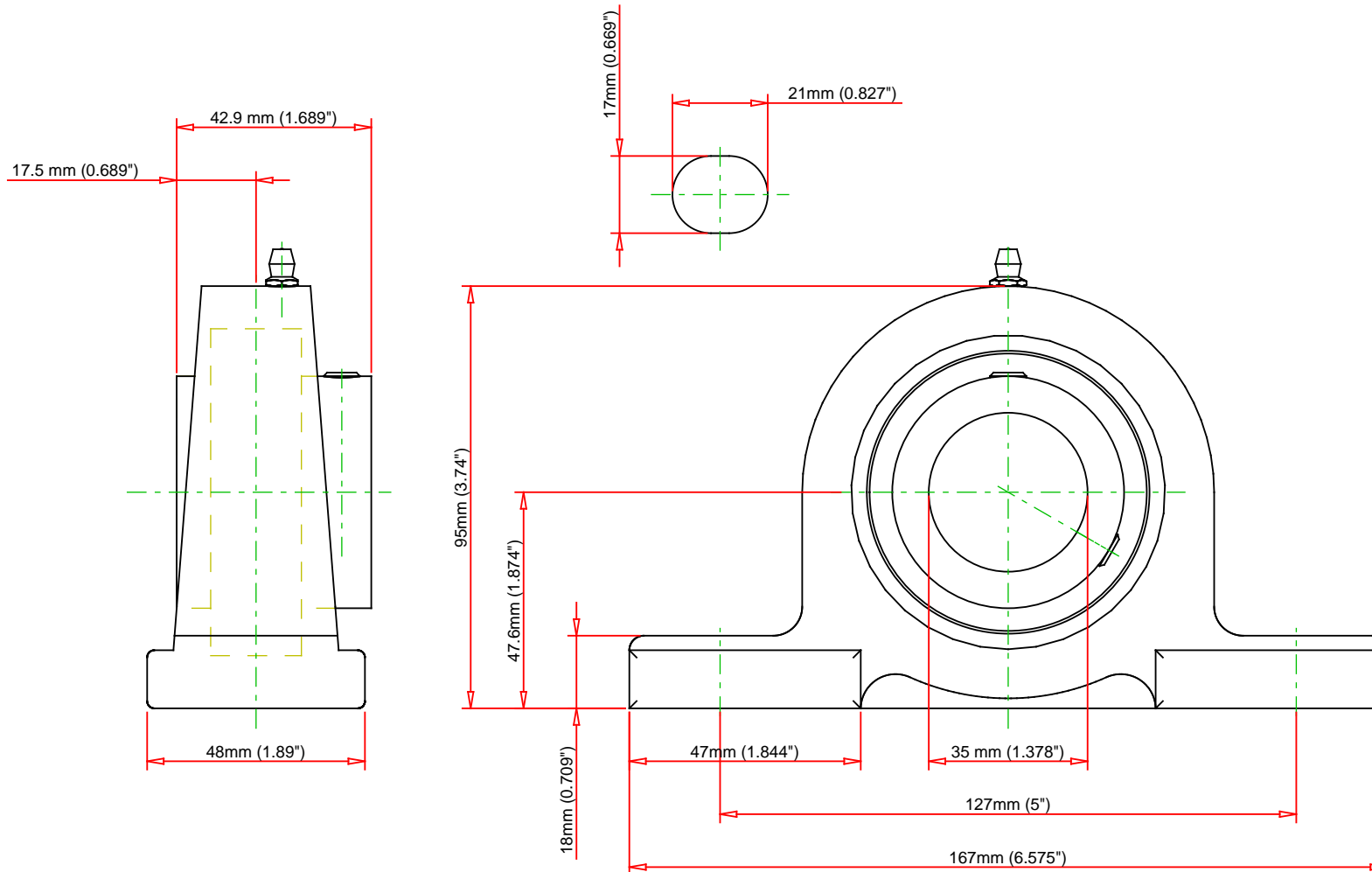
### Dimensions

<b>Base to Center Height H</b>	47.60 mm 1.874 in
<b>Total Length L</b>	167.00 mm 6.575 in
<b>Housing Width A</b>	48.00 mm 1.890 in

	1.870 in
<b>Bolt Hole Spacing J</b>	127.00 mm 5.000 in
<b>Bolt Hole Size N</b>	17.00 mm 0.669 in
<b>Bolt Hole Length N1</b>	21.00 mm 0.827 in
<b>Foot Height H1</b>	18.00 mm
<b>Total Height H2</b>	95.00 mm 3.740 in
<b>Dimension L1</b>	47.00 mm 1.844 in
<b>Inner Ring Width B</b>	42.90 mm 1.689 in
<b>Center of Bearing from End S</b>	17.5 mm 0.689 in

## Basic Load Ratings

<b>Static Load Rating</b>	3462 lbf 15400 N
<b>Dynamic Load Rating</b>	5778 lbf 25700 N



Bearing Number	UC207			
Load Ratings - C <sub>r</sub>	5778	lbf	25700	N
Load Ratings - C <sub>0r</sub>	3462	lbf	15400	N
Weight	3.5	lb	1.6	kg
Bolt Size	M14			

**TIMKEN**

THE TIMKEN COMPANY  
NORTH CANTON, OHIO USA

**UCP207**

UCP 200 Pillow Block Housed Units - Set  
Screw Locking

Every reasonable effort has been made to ensure the accuracy of the information contained in this writing, but no liability is accepted for errors, omissions or for any other reason.

**FOR DISCUSSION ONLY**