


The Timken Company

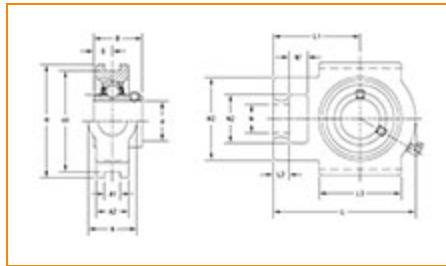
4500 Mt Pleasant St. NW

N. Canton, OH 44720

Phone: (234) 262-3000

E-Mail: CustomerCAD@timken.com • **Web site:** www.timken.com

Part Number UCT310, UCT 300 Take-Up Mounted Bearings - Set Screw Locking



[Specifications](#) | [Dimensions](#) | [Basic Load Ratings](#)

Specifications

Bearing Number	UC310
Shaft Size d	50 mm
Locking Style	Set Screw Locking
Housing Construction	Take-Up

Dimensions

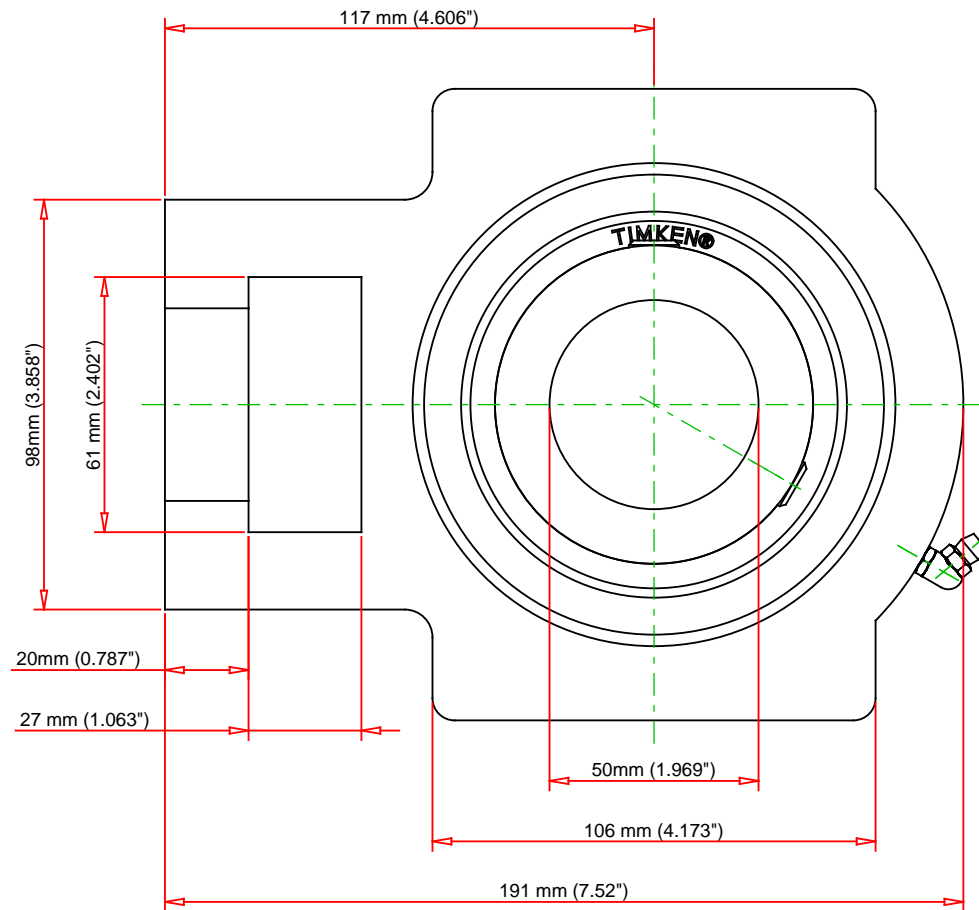
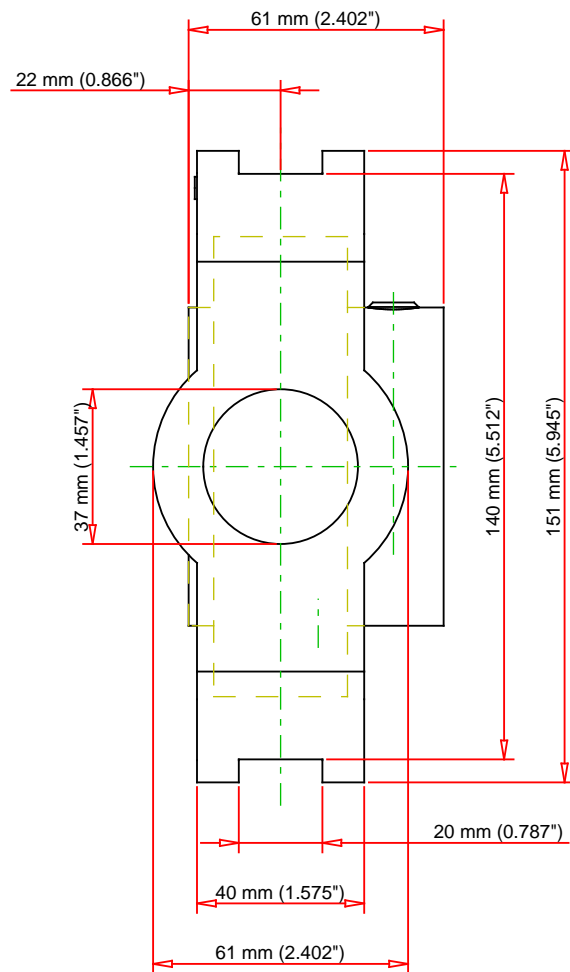
Housing Width A	61 mm 2.402 in
Slot Width A1	20 mm 0.787 in
Pocket Width A2	40 mm 1.575 in



Total Height H	151 mm 5.945 in
Pitch Height H1	140 mm
Height H2	98 mm
Total Length L	191 mm 7.52 in
Shaft Length L1	117 mm 4.606 in
Dimension L2	20 mm
Slot Length L3	106 mm 4.173 in
Adjustment Screw Bore N	37 mm 1.457 in
Opening Width N1	27 mm 1.063 in
Opening Height N2	61 mm 2.402 in
Inner Ring Width B	61 mm 2.402 in
Center of Bearing from End S	22 mm 0.866 in
Grease Nipple Size	B-R1/8

Basic Load Ratings

Static Load Rating	38300 N 8610 lbf
Dynamic Load Rating	62000 N 13938 lbf



Bearing Number	UC310			
Load Ratings - C _r	13938	lbf	62000	N
Load Ratings - C _{0r}	8610	lbf	38300	N
Weight	10.8	lb	4.9	kg

TIMKEN®

THE TIMKEN COMPANY
NORTH CANTON, OHIO USA

UCT310

UCT 300 Take-Up Mounted Bearings - Set
Screw Locking

Every reasonable effort has been made to ensure the accuracy of the information contained in this writing, but no liability is accepted for errors, omissions or for any other reason.

FOR DISCUSSION ONLY