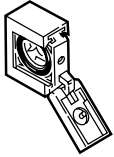


Quikclamp

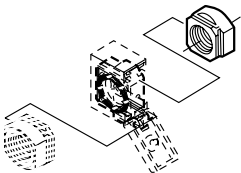
Use with all 73 and 74 Series Products to provide modular installation capability. Flanges on the products slide into V grooves in the Quikclamp. Two face-sealing o-rings in the Quikclamp provide a positive seal when the clamp is closed and the captive screw is tightened. A Quikclamp adds 0.54" (13.6 mm) to the overall length of a combination unit. Tighten screw with a 5/32" (4 mm) hex or T25 Torx wrench. (30 in. lbs. Torque)



Material: Zinc
Quikclamp part number: 4314-51
O-ring kit part number: 4384-770

Quikmount Pipe Adapters

Use with the Quikclamp to provide threaded connections to the system piping. Each pipe adapter adds 0.71" (18 mm) to the overall length of a combination unit (each kit contains one adapter).

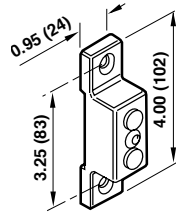


Material: Aluminum

Part number 1)	Port size and (Qty) thread
4315-01	1/4" PTF
4315-02	3/8" PTF
4315-03	1/2" PTF
4315-04	3/4" PTF
4315-09	1/4" ISO G
4315-10	3/8" ISO G
4315-11	1/2" ISO G
4315-12	3/4" ISO G

Quikclamp Wall Mounting Bracket

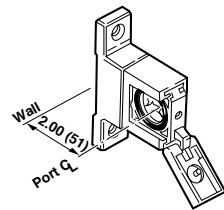
Use with the Quikclamp to provide secure mounting to a wall, machine panel or other flat surface. Use No. 12 (6 mm) screws to mount bracket to wall.



Material: Zinc
Part number: 4313-50

Quikclamp and Wall Mounting Bracket

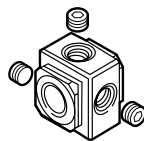
See preceding paragraphs for descriptions and dimensions.



Material: Zinc
Part number: 4314-52
L74 1 quart 4314-55

Porting Block

Installs between two Quikclamps to provide three additional 1/4" outlets for auxiliary air. A Porting Block adds 1.30" (33 mm) to the overall length of a combination unit.

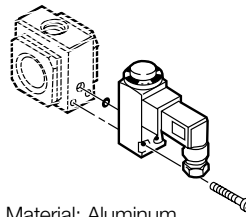


Material: Zinc

Part number	Auxiliary port size and thread
4316-50	1/4" PTF
4316-52	1/4" ISO G

Replacement Pressure Switch

Use only with the pressure switch subbase. Cannot be used with the standard porting block.

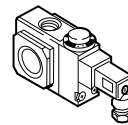


Material: Aluminum
Pressure switch part number: 4346-01

Subbase Mounted Pressure Switch

Monitors air pressure and provides an electrical output when the pressure drops below or exceeds an adjustable preset pressure. Installs between two Quikclamps. Also provides three additional 1/4" outlets for auxiliary air.

A Subbase Mounted Pressure Switch adds 1.30" (33 mm) to the overall length of a combination unit.

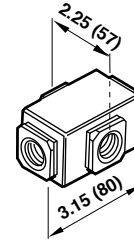


Specifications
Maximum Pressure: 300 psig (20 bar)
Maximum Temperature: 175°F (80°C)
Adjustable Range: 30 to 150 psig (2 to 10 bar)
Shipped from factory preset at 90 psig (6.2 bar).
Maximum Voltage: 240V ac/dc
Maximum Current: 5 Amp
Hysteresis at Midpoint: 12%
Materials: Zinc subbase, Aluminum switch

Part number	Auxiliary port thread
4346-50	1/4" PTF
4346-52	1/4" ISO G

Manifold Block

Installs with Quikclamps. Ports are threaded 3/4" pipe to provide manifolding capability for up to three components.



Material: Zinc

Part number	Side port threads
4328-50	3/4" PTF
4328-52	3/4" ISO Rc

Transition Connector

Enables connection of Excelon 72 to 74 units. A transition connector adds 0.06" (1.5mm) to the overall length of a combination unit.



Material: Aluminum
Part Number: 4417-01