



FAG

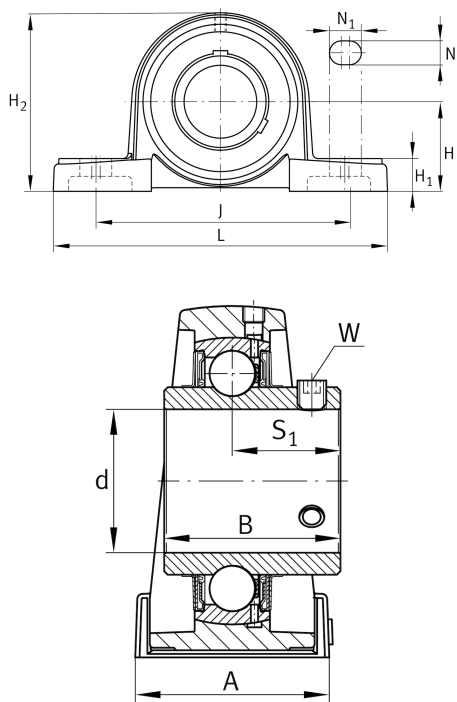
UCP202

Plummer block housing unit

Schaeffler ID:
0821597500000

Plummer block housing units UCP, cast iron housing, with long base, radial insert ball bearing with grub screws in inner ring, RSR seals

Technical information



Main Dimensions & Performance Data

d	15 mm	Bore diameter
L	127 mm	Length total
H ₂	62 mm	Hight
	0.62 kg	Weight

Dimensions

H	30.2 mm	Distance shaft axis
A	38 mm	Width (base)
H ₁	14 mm	Heigth (base)
B	31 mm	Width
S ₁	18.3 mm	Distance of raceway to locking collar
Q	M6	Connection thread lubrication

Mounting dimensions

J	95 mm	Distance fixing bore
N	13 mm	Width (slot)
N ₁	19 mm	Length (slot)

Additional information

P203	Housing
UC202	Bearing designation