



The Timken Company

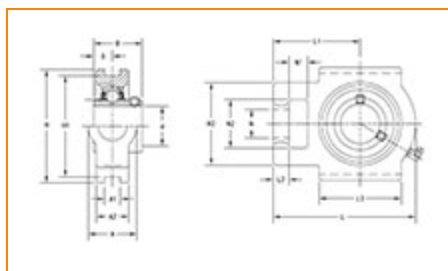
4500 Mt Pleasant St. NW

N. Canton, OH 44720

Phone: (234) 262-3000

E-Mail: CustomerCAD@timken.com • Web site: www.timken.com

Part Number UCT210-30, UCT 200 Take-Up Housed Units - Set Screw Locking



[Specifications](#) | [Dimensions](#) | [Basic Load Ratings](#)

Specifications

Bearing Number	UC210-30
Shaft Size d	1 7/8 in
Weight	5.7 lb 2.6 Kg
UPC Code	087796077881
Locking Style	Set Screw Locking
Housing Construction	Take-Up

Dimensions

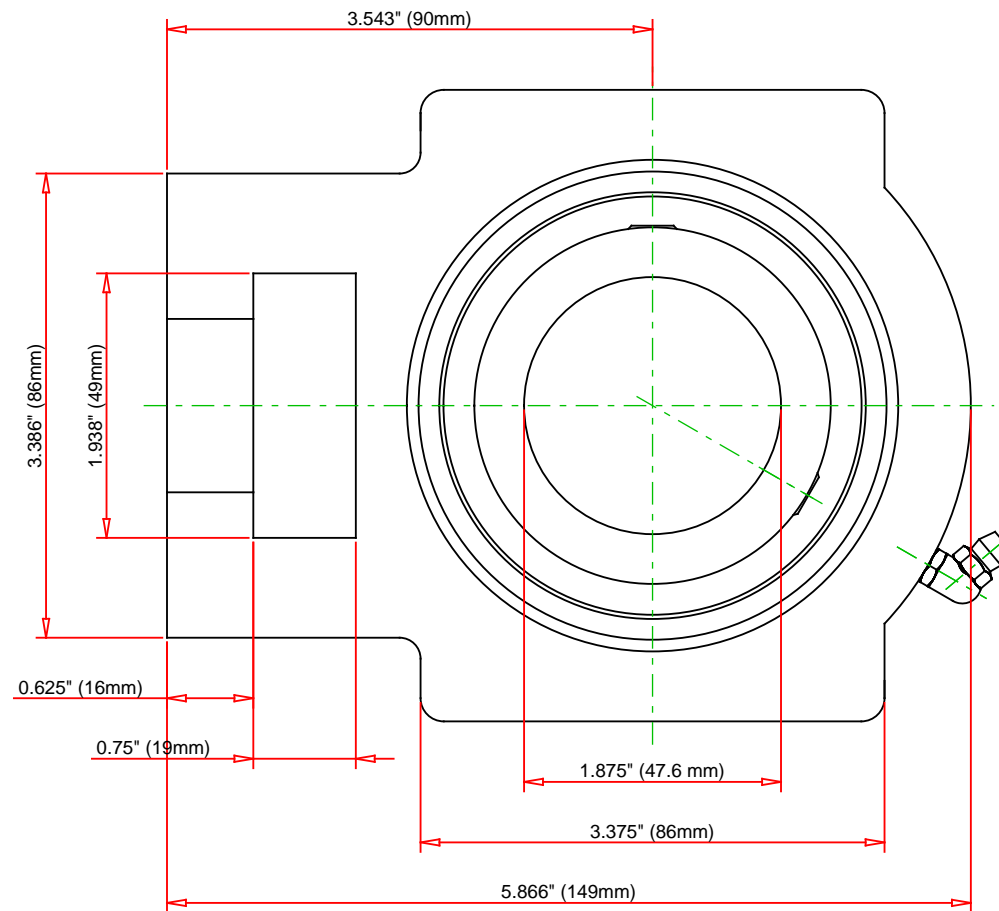
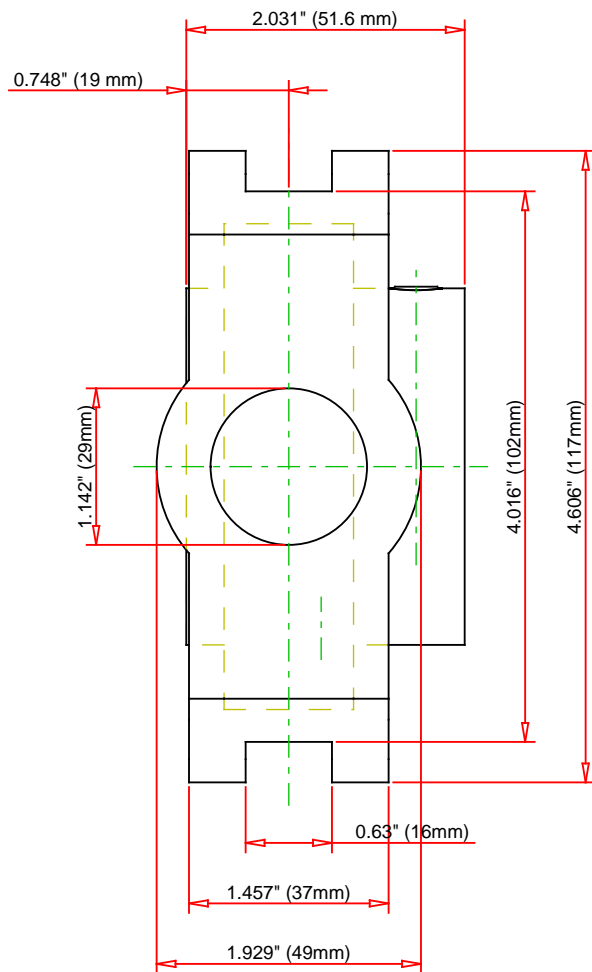
Grease Nipple Size	A-1/4-28UNF
Housing Width A	49.00 mm 1.929 in

Slot Width A1	16 mm 0.63 in
Socket Width A2	37.00 mm 1.457 in
Total Height H	117.00 mm 4.606 in
Pitch Height H1	102.00 mm
Height H2	86.00 mm
Total Length L	149.00 mm 5.866 in
Shaft Length L1	90.00 mm 3.543 in
Dimension L2	16.00 mm
Slot Length L3	86.00 mm 3.375 in
Adjustment Screw Bore N	29.00 mm 1.142 in
Opening Width N1	19.00 mm 0.750 in
Opening Height N2	49.00 mm 1 15/16 in
Inner Ring Width B	51.60 mm 2.031 in
Center of Bearing from End S	19 mm 0.748 in

Basic Load Ratings

Static Load Rating	5238 lbf 23300 N
Dynamic Load Rating	7891 lbf 35100 N

35100 IN



Bearing Number	UC210-30			
Load Ratings - C _r	7891	lbf	35100	N
Load Ratings - C _{0r}	5238	lbf	23300	N
Weight	5.7	lb	2.6	kg

TIMKEN

THE TIMKEN COMPANY
NORTH CANTON, OHIO USA

UCT210-30
UCT 200 Take-Up Housed Units - Set
Screw Locking

Every reasonable effort has been made to ensure the accuracy of the information contained in this writing, but no liability is accepted for errors, omissions or for any other reason.

FOR DISCUSSION ONLY