

How to Order

AS 2 2 1 1 F - 01 - 06 S D -

Body size

| | |
|---|-------------------|
| 1 | M5 standard |
| 2 | 1/8, 1/4 standard |
| 3 | 3/8 standard |
| 4 | 1/2 standard |

Type

| | |
|---|-----------|
| 2 | Elbow |
| 3 | Universal |

Control

| | |
|---|-----------|
| 0 | Meter-out |
| 1 | Meter-in |

Port size

| | |
|--------|-----------|
| M5 | M5 x 0.8 |
| 01 | R 1/8 |
| 02 | R 1/4 |
| 03 | R 3/8 |
| 04 | R 1/2 |
| U10/32 | 10-32 UNF |
| N01 | NPT 1/8 |
| N02 | NPT 1/4 |
| N03 | NPT 3/8 |
| N04 | NPT 1/2 |

Applicable tubing O.D.

| Metric size | | Inch size | |
|-------------|-------|-----------|--------|
| 23 | ø3.2* | 01 | ø1/8" |
| 04 | ø4 | 03 | ø5/32" |
| 06 | ø6 | 05 | ø3/16" |
| 08 | ø8 | 07 | ø1/4" |
| 10 | ø10 | 09 | ø5/16" |
| 12 | ø12 | 11 | ø3/8" |
| | | 13 | ø1/2" |

Type adjustable by flat head screwdriver

With seal
Note) In the case that port size is either M5 or 10-32 UNF thread, it is not available with seal. Gasket is provided as standard.

Made to Order
Refer to the below for details.

With One-touch fitting

Made to Order



Lubricant: Vaseline

X12

Ex.) AS1201F-M5-23D-X12

Grease-free (Seal: Fluorine Coating) + Throttle Valve (Without Check Valve)

X21

Ex.) AS1201F-M5-23D-X21

Note 1) Not particle-free

Note 2) Throttle valve is only compatible with the part no. of the meter-out type.

Throttle Valve (Without Check Valve)

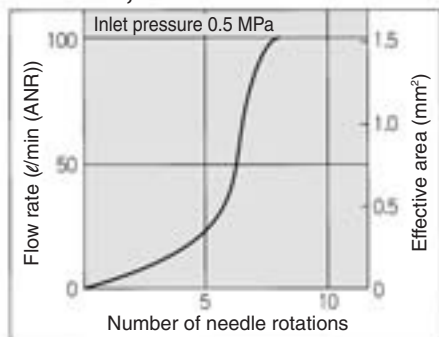
X214

Ex.) AS1201F-M5-23D-X214

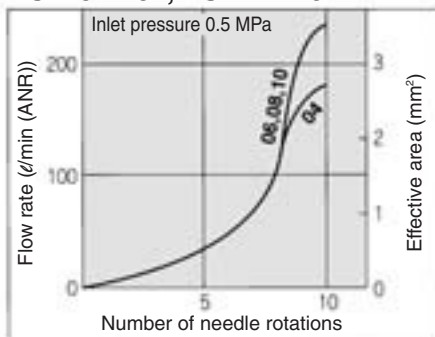
Note) Throttle valve is only compatible with the part no. of the meter-out type.

Needle Valve/Flow Characteristics

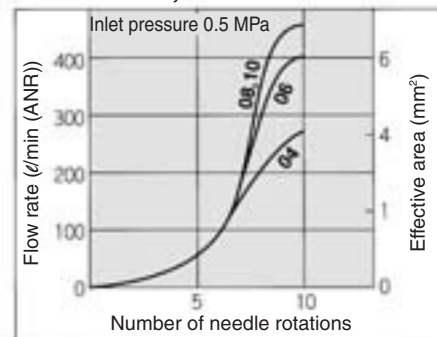
AS1201F, AS1211F



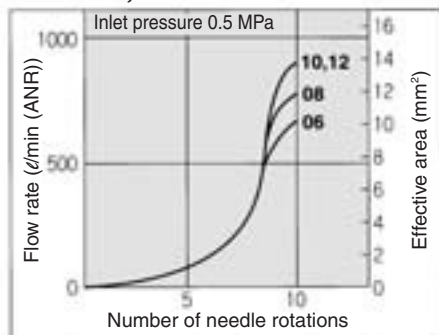
AS2201F-01, AS2211F-01



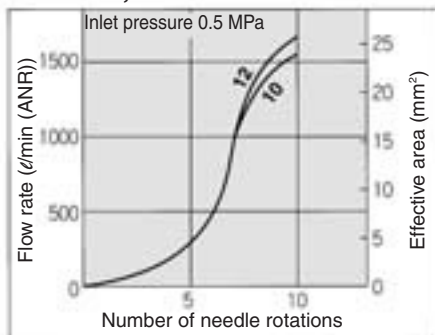
AS2201F-02, AS2211F-02



AS3201F, AS3211F



AS4201F, AS4211F



Speed Controller Adjustable by Flat Head Screwdriver with One-touch Fittings In-line Type

Series **AS** **1F-D**



Model

| Model | Applicable tubing O.D. | | | | | | | | | | | | Applicable cylinder bore size (mm) | |
|---------|------------------------|---|---|---|----|----|-----------|-------|-------|------|-------|------|------------------------------------|----------------|
| | Metric size | | | | | | Inch size | | | | | | | |
| | 3.2 | 4 | 6 | 8 | 10 | 12 | 1/8" | 5/32" | 3/16" | 1/4" | 5/16" | 3/8" | | 1/2" |
| AS1001F | ● | ● | ● | | | | ● | ● | ● | ● | | | | 6, 10, 16, 20 |
| AS2001F | | ● | ● | | | | | ● | ● | ● | | | | 20, 25, 32 |
| AS2051F | | | ● | ● | | | | | ● | ● | ● | | | 20, 25, 32, 40 |
| AS3001F | | | ● | ● | ● | ● | | | | ● | ● | ● | | 40, 50, 63 |
| AS4001F | | | | | ● | ● | | | | | | ● | ● | 63, 80, 100 |

Specifications

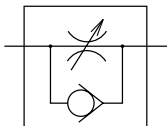
| | |
|---|------------------------------------|
| Fluid | Air |
| Proof pressure | 1.5 MPa |
| Max. operating pressure | 1 MPa |
| Min. operating pressure | 0.1 MPa |
| Ambient and fluid temperature | −5 to 60°C (No freezing) |
| Number of needle rotations | 10 turns (8 turns ⁽¹⁾) |
| Applicable tubing material ⁽²⁾ | Nylon, Soft nylon, Polyurethane |

Note 1) In the case of AS1001F type

Note 2) Use caution regarding the max. operating pressure when soft nylon or polyurethane tubing is used.
(Refer to pages 371 and 372 for details.)

Note 3) Brass parts are all electroless nickel plated.

JIS Symbol



Flow Direction Symbols on Body



Flow Rate and Effective Area

| Model | | AS1001F | AS2001F | AS2051F | | AS3001F | | | AS4001F | | |
|-----------------------------------|-------------------------|--------------------------------|---------|---------------|--------|---------------|-------|--------|----------|-------|-------|
| Tubing O.D. | Metric size | ø3.2, ø4, ø6 | ø4 | ø6 | ø6 | ø8 | ø6 | ø8 | ø10, ø12 | ø10 | ø12 |
| | Inch size | ø1/8", ø5/32" ø3/16", ø1/4" | ø5/32" | ø3/16", ø1/4" | ø3/16" | ø1/4", ø5/16" | ø1/4" | ø5/16" | ø3/8" | ø3/8" | ø1/2" |
| Controlled flow (Free flow) | Flow rate (l/min (ANR)) | 100 | 130 | 230 | 290 | 460 | 420 | 660 | 920 | 1050 | 1390 |
| | Effective area (mm²) | 1.5 | 2 | 3.5 | 4.5 | 7 | 6.5 | 10 | 14 | 16 | 21 |

Note) Flow rate values are measured at 0.5 MPa and 20°C

How to Order

AS 200 **1F** — 06 **D** —

Body size

| | |
|-----|--------------|
| 100 | M5 standard |
| 200 | 1/8 standard |
| 205 | 1/4 standard |
| 300 | 3/8 standard |
| 400 | 1/2 standard |

With One-touch fittings

Type adjustable by flat head screwdriver

Made to Order

Refer to page 521 for details.

Applicable tubing O.D.

| Metric size | Inch size |
|-------------|-----------|
| 23 ø3.2 * | 01 ø1/8" |
| 04 ø4 | 03 ø5/32" |
| 06 ø6 | 05 ø3/16" |
| 08 ø8 | 07 ø1/4" |
| 10 ø10 | 09 ø5/16" |
| 12 ø12 | 11 ø3/8" |
| | 13 ø1/2" |

* Use ø1/8" tube.



Made to Order
(Refer to page 521 for details.)

Caution

Be sure to read before handling.
Refer to front matters 58 and 59 for
Safety Instructions and pages 412 to 414
for Flow Control Equipment Precautions.