

Pressure Gauge for General Purpose/With Limit Indicator *Series G46/GA46*

How to Order

G **46** - **10** - **01** - **Option** - **Attachment** - **Option**

• **Pressure gauge**

Symbol	Type
Nil	Back side thread
A	Vertical side thread

• **Type**

• **Connection thread**

Symbol	Size
01	R 1/8
02	R 1/4

• **Option**

Symbol	Specifications
Nil	—
M	With M5 (Female thread)

Note) Use M5 female thread when piping onto a panel.

• **Max. display pressure**

Symbol	Unit
2	0.2 MPa
4	0.4 MPa
7	0.7 MPa
10	1.0 MPa
15	1.5 MPa
P2 (Note)	0.2 MPa, 30 psi
P10 (Note)	1.0 MPa, 150 psi

Note) This symbol must be used with Option "X30."

• **Attachment**

Symbol	Specifications
Nil	Without cover ring assembly
C (Note)	Clear cover has no protrusion. (Clear cover is irremovable.)
C1 (Note)	Clear cover has protrusion. (Clear cover is removable.)

Note) Compatible with G46 type only

• **Option**

Symbol	Specifications
Nil	—
X2	Stud parts Nickel plated
X3 (1) (2)	Wetted parts stainless steel (1)
X4	Oil-free (Wetted parts degrease washing)
X30	Both MPa and psi

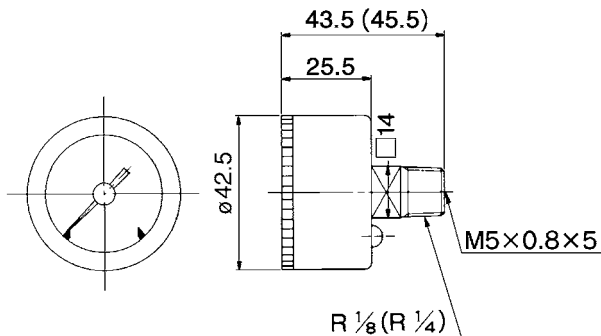
Note 1) Movable parts (gear, etc) inside pressure gauge are made of brass.
Note 2) Compatible with G46 type only

• **Size**

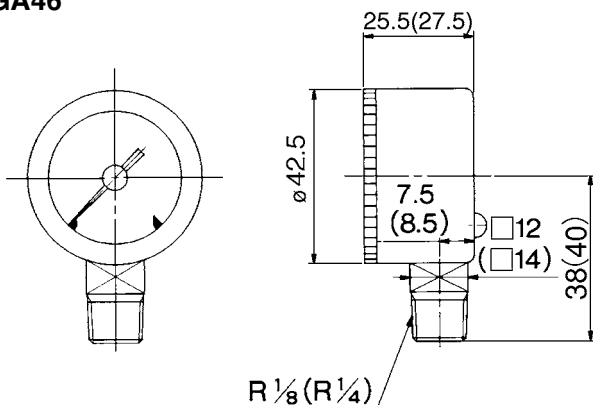
Symbol	Outside diameter
46	ø42.5

Dimensions The dimensions in (): Connecting thread R 1/4

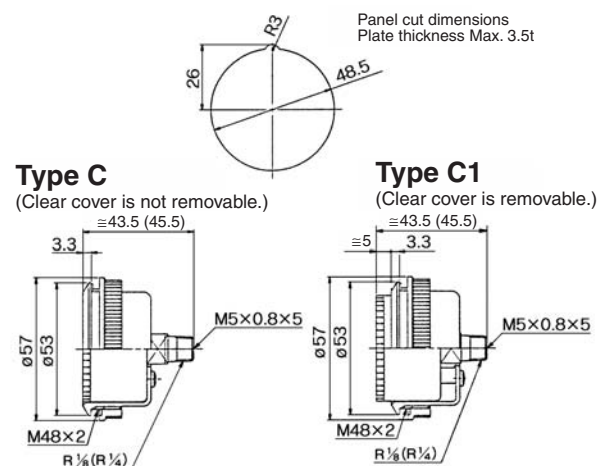
G46



GA46



G46: With cover ring assembly (For panel mount)



For setting method, refer to page 662.