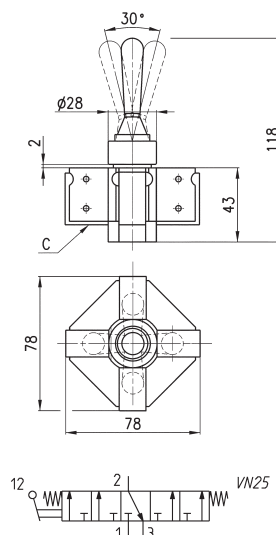
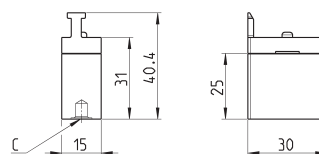


### Joystick valves Mod. 234-9054, 235-9054

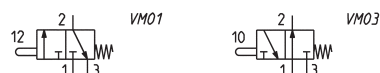


Mod.	Minimum pressure (bar)
234-9054	2
235-9054	2

### Minivalves Mod. 234-000, 235-000, 244-000, 245-000



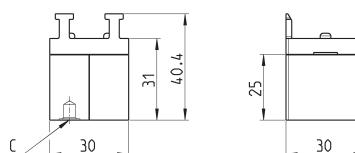
Mod.	Operating pressure (bar)	Flow (NL/min)	Symbols
<b>234-000</b>	2 ÷ 8	60	VM01
<b>235-000</b>	2 ÷ 8	60	VM01
<b>244-000</b>	2 ÷ 8	60	VM03
<b>245-000</b>	2 ÷ 8	60	VM03



## Minivalves Mod. 284-000, 285-000



The codes shown in the table are composed by two 3/2-way valves NC which can be operated with the control device Mod. 200-870 only.



Mod.	Operating pressure (bar)	Flow (NL/min)	Symbols
<b>284-000</b>	2 ÷ 8	60	VM21
<b>285-000</b>	2 ÷ 8	60	VM21

