


The Timken Company

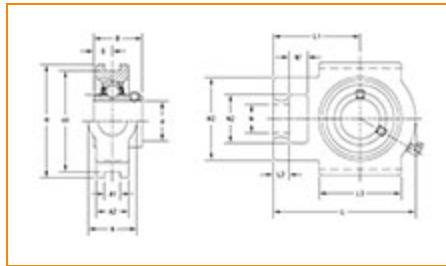
4500 Mt Pleasant St. NW

N. Canton, OH 44720

Phone: (234) 262-3000

E-Mail: CustomerCAD@timken.com • **Web site:** www.timken.com

Part Number UCT309, UCT 300 Take-Up Mounted Bearings - Set Screw Locking


[Specifications](#) | [Dimensions](#) | [Basic Load Ratings](#)

Specifications

Bearing Number	UC309
Shaft Size d	45 mm
Locking Style	Set Screw Locking
Housing Construction	Take-Up

Dimensions

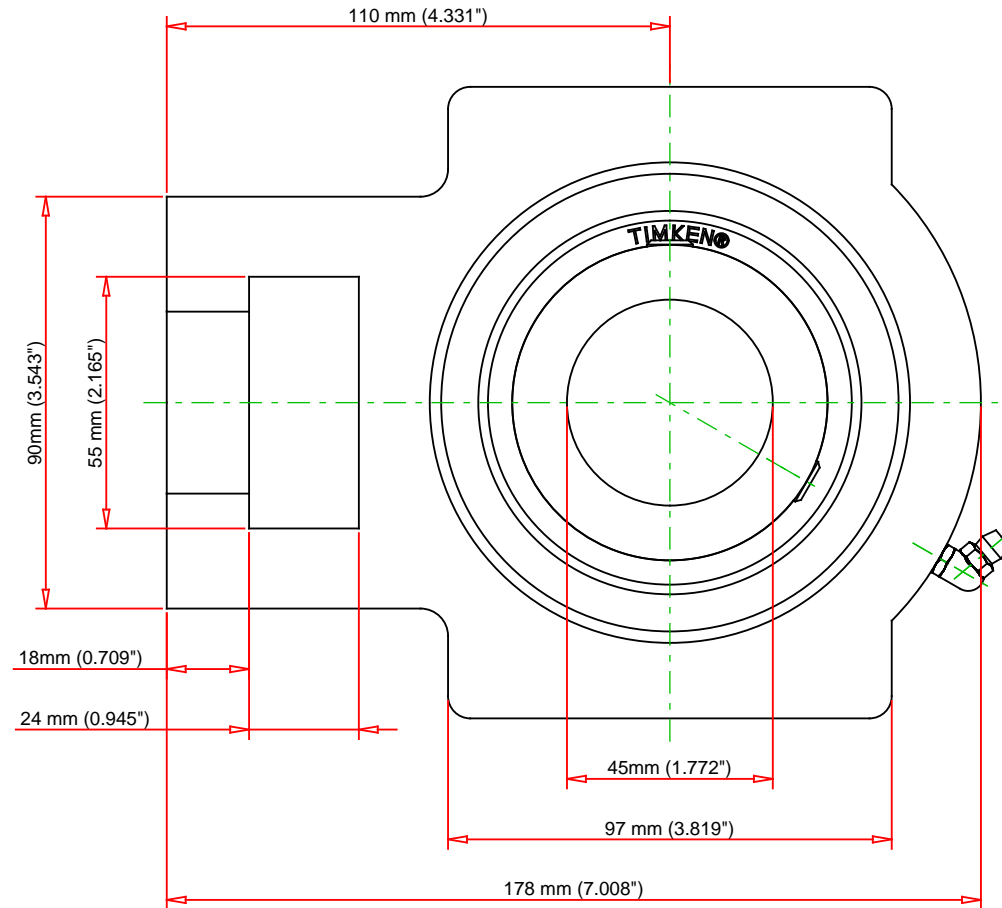
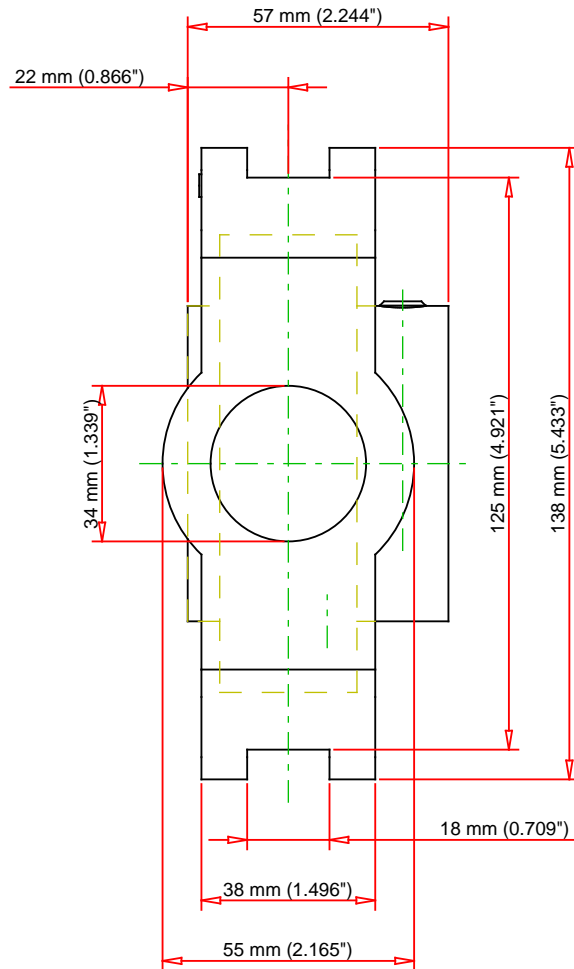
Housing Width A	55 mm 2.165 in
Slot Width A1	18 mm 0.709 in
Slot Width A2	38 mm 1.496 in



Total Height H	138 mm 5.433 in
Pitch Height H1	125 mm
Height H2	90 mm
Total Length L	178 mm 7.008 in
Shaft Length L1	110 mm 4.331 in
Dimension L2	18 mm
Slot Length L3	97 mm 3.819 in
Adjustment Screw Bore N	34 mm 1.339 in
Opening Width N1	24 mm 0.945 in
Opening Height N2	55 mm 2.165 in
Inner Ring Width B	57 mm 2.244 in
Center of Bearing from End S	22 mm 0.866 in
Grease Nipple Size	B-R1/8

Basic Load Ratings

Static Load Rating	29500 N 6632 lbf
Dynamic Load Rating	48900 N 10993 lbf



Bearing Number	UC309			
Load Ratings - C _r	10993	lbf	48900	N
Load Ratings - C _{0r}	6632	lbf	29500	N
Weight	9	lb	4.1	kg

TIMKEN®

THE TIMKEN COMPANY
NORTH CANTON, OHIO USA

UCT309

UCT 300 Take-Up Mounted Bearings - Set
Screw Locking

Every reasonable effort has been made to ensure the accuracy of the information contained in this writing, but no liability is accepted for errors, omissions or for any other reason.

FOR DISCUSSION ONLY