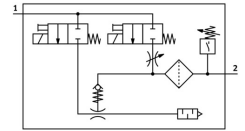



Vacuum generator OVEM-20-H-B-PO-CE-N-1P

Part number: 8023701

FESTO



 General operating condition

Data sheet

| Feature | Value |
|---|--|
| Nominal size, Laval nozzle | 2 mm |
| Grid dimension | 20 mm |
| Silencer design | Open |
| Mounting position | optional |
| Ejector characteristic | High vacuum Standard |
| Grade of filtration | 40 µm |
| Manual override | Non-detenting |
| Integrated function | Electric ejector pulse valve Flow control Electric on-off valve Filter Check valve Open silencer Vacuum switch |
| Design | Modular |
| Short circuit current rating | yes |
| Measured variable | Relative pressure |
| Measuring principle | Piezoresistive |
| Switching element function | N/O contact |
| Switching function | Threshold value comparator Threshold value with fixed hysteresis |
| Symbol | 00992094 |
| Valve function | Closed |
| Reverse polarity protection | For all electrical connections |
| Standard switching input | IEC 61131-2 |
| Display type | LED |
| Setting options | Teach-in |
| Switching position indicator | LED |
| Switching status indication | Optical |
| Setting range threshold value | -1 bar ... 0 bar |
| Operating pressure | 2 bar ... 8 bar |
| Operating pressure for max. vacuum | 5.3 bar |
| Max. vacuum | 93 % |
| Nominal operating pressure | 6 bar |
| Max. suction flow rate against atmosphere | 86.5 l/min |
| Air supply time at nominal operating pressure | 0.2 s |
| Operational voltage range DC | 20.4 V ... 27.6 V |

| Feature | Value |
|--|---|
| Duty cycle | 100% |
| Inductive protective circuit | Adapted to MZ, MY, ME coils |
| Insulation voltage | 50 V |
| No-load supply current | <80 mA |
| Max. output current | 100 mA |
| Off-state current | 0.1 mA |
| Switching output | PNP |
| Voltage drop | ≤1.5 V |
| Characteristic coil data | 24 V DC: low-current phase 0.3 W, high-current phase 2.55 W |
| Immunity to surge | 0.8 kV |
| Overload protection | Available |
| Pollution degree | 3 |
| Approval | RCM trademark c UL us listed (OL) |
| KC mark | KC-EMV |
| CE mark (see declaration of conformity) | To EU EMC Directive |
| CE marking (see declaration of conformity) | To UK instructions for EMC |
| Operating medium | Compressed air to ISO 8573-1:2010 [7:4:4] |
| Note on operating and pilot medium | Lubricated operation not possible |
| Corrosion resistance class CRC | 2 - Moderate corrosion stress |
| LABS (PWIS) conformity | VDMA24364 zone III |
| Media temperature | 0 °C ... 50 °C |
| Relative air humidity | 5 - 85 % |
| Sound pressure level at nominal operating pressure | 74 dB(A) |
| Degree of protection | IP65 |
| Protection class | III |
| Ambient temperature | 0 °C ... 50 °C |
| Max. tightening torque | 0.8 Nm with female thread 2.5 Nm with through-hole |
| Product weight | 415 g |
| Pressure measuring range | -1 bar ... 0 bar |
| Accuracy in ± % FS | 0.5 %FS |
| Hysteresis | 0.02 bar |
| Reproducibility of switching values FS | 0.6 % |
| Switching logic for inputs | PNP (positive switching) |
| Electrical connection | 5-pin M12x1 Plugs |
| Type of mounting | With through-hole Via female thread With accessories |
| Pneumatic connection, port 1 | G1/4 |
| Pneumatic connection, port 3 | Integrated silencer |
| Vacuum connection | QS-8 |
| Note on materials | RoHS-compliant |
| Material seals | NBR |
| Material receiver nozzle | POM |
| Material filter | Fabric PA Sintered steel |
| Material filter housing | PA-reinforced |
| Material housing | Die-cast aluminium PA-reinforced |
| Material hollow bolt | Wrought aluminium alloy |
| Material adjusting screw | Steel |

| Feature | Value |
|-----------------------------|------------------------------------|
| Material silencer | Wrought aluminium alloy PU foam |
| Material screws | Steel |
| Material connector housing | Nickel-plated brass |
| Material electrical contact | Gold-plated brass |
| Material pins | Steel |
| Material transmitter nozzle | Wrought aluminium alloy |
| Material keypad | PA-reinforced |
| Material fitting | Nickel-plated brass |
| Material bracket | Stainless steel |