


The Timken Company

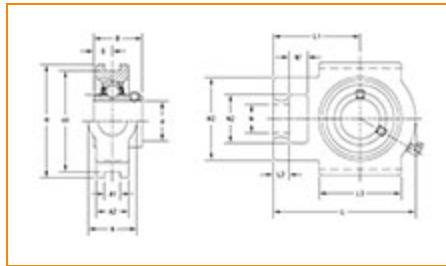
4500 Mt Pleasant St. NW

N. Canton, OH 44720

Phone: (234) 262-3000

E-Mail: CustomerCAD@timken.com • **Web site:** www.timken.com

Part Number UCT308, UCT 300 Take-Up Mounted Bearings - Set Screw Locking


[Specifications](#) | [Dimensions](#) | [Basic Load Ratings](#)

Specifications

Bearing Number	UC308
Shaft Size d	40 mm
Locking Style	Set Screw Locking
Housing Construction	Take-Up

Dimensions

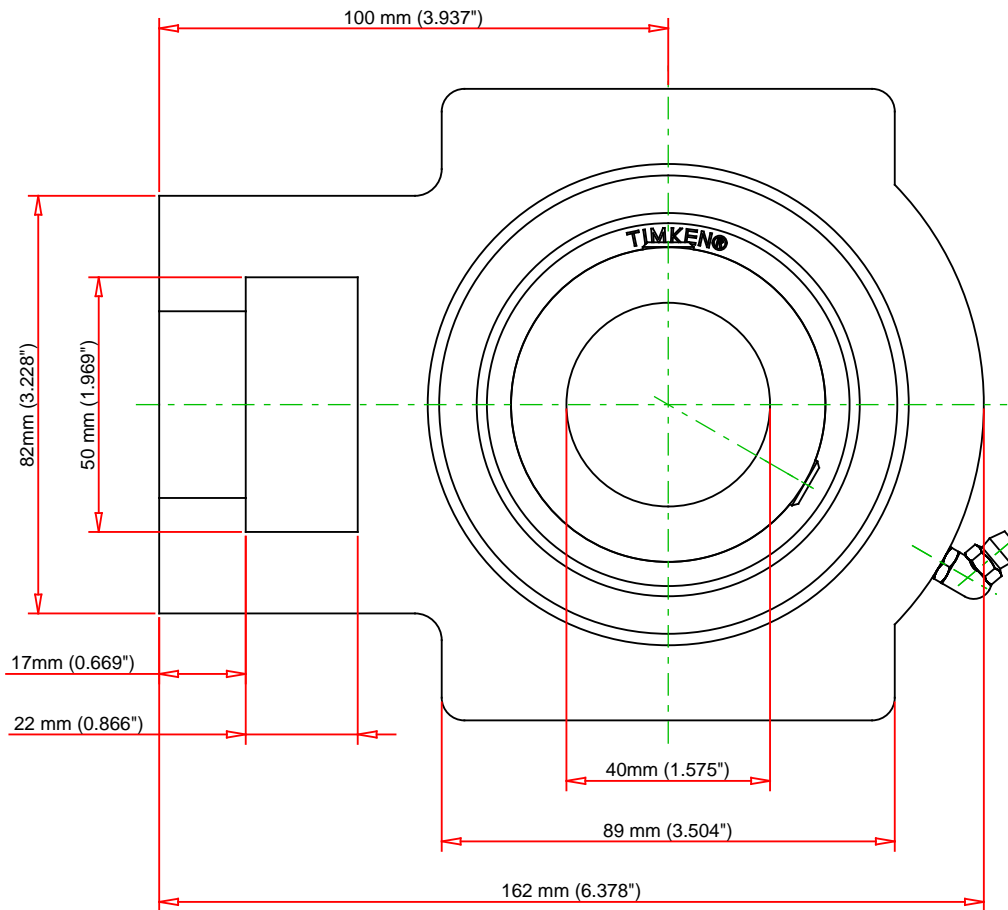
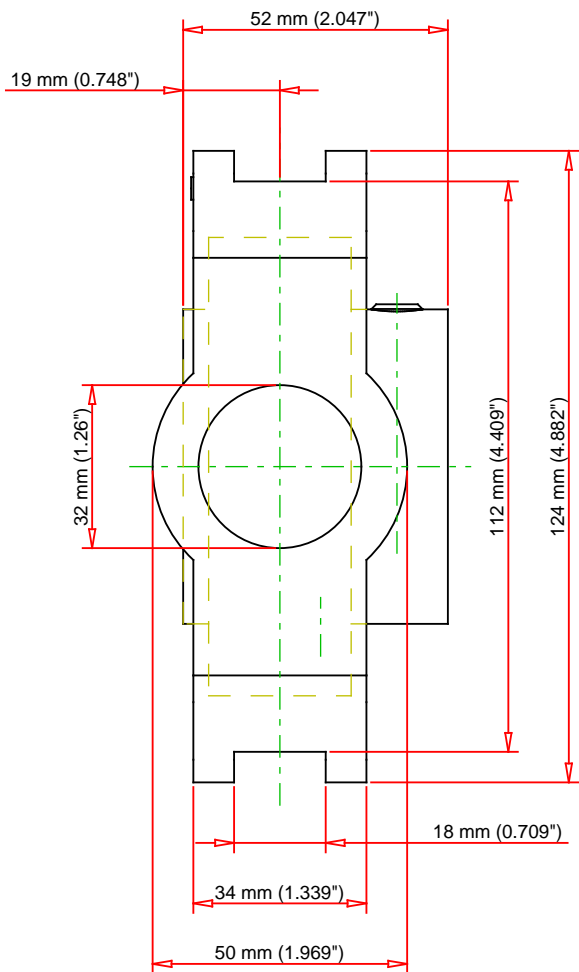
Housing Width A	50 mm
Slot Width A1	18 mm
Socket Width A2	34 mm
Total Height H	124 mm
Pitch Height H1	112 mm



Height H2	82 mm
Total Length L	162 mm
Shaft Length L1	100 mm
Dimension L2	17 mm
Slot Length L3	89 mm
Adjustment Screw Bore N	32 mm
Opening Width N1	22 mm
Opening Height N2	50 mm
Inner Ring Width B	52 mm
Center of Bearing from End S	19 mm
Grease Nipple Size	B-1/4-28UNF

Basic Load Ratings

Static Load Rating	24000 N
Dynamic Load Rating	40700 N



Bearing Number	UC308			
Load Ratings - C _r	9150	lbf	40700	N
Load Ratings - C _{0r}	5395	lbf	24000	N
Weight	6.6	lb	3	kg

TIMKEN®

THE TIMKEN COMPANY
NORTH CANTON, OHIO USA

UCT308

UCT 300 Take-Up Mounted Bearings - Set
Screw Locking

Every reasonable effort has been made to ensure the accuracy of the information contained in this writing, but no liability is accepted for errors, omissions or for any other reason.

FOR DISCUSSION ONLY