

# QR1-S-RID standard series

- Swivel banjo connection 2-fold, with internal thread
- External thread
- M5 R 1/8 R 1/4 R 3/8
- push-in fitting
- Ø 4 Ø 6 Ø 8 Ø 10
- Internal thread
- M5 G 1/8 G 1/4 G 3/8
- QR1-S-RID



Working pressure min./max.	-0,95 ... 10 bar
Ambient temperature min./max.	0 ... 60 °C
Weight per piece	See table below

## Technical data

Part No.	Port G	Port D	Delivery unit	Weight per piece
R412005259	M5	Ø 4	10 piece	0,009 kg
R412005260	R 1/8	Ø 6	10 piece	0,028 kg
R412005261	R 1/4	Ø 8	10 piece	0,047 kg
R412005262	R 3/8	Ø 10	5 piece	0,081 kg

## Technical information

The series QR1 (plastic) and QR2 (metal) can not be combined

Thread seal with captive O-ring

For further information about assembling and tolerances of adaptable tubing can be found in the “Technical information” document (available in the MediaCentre).

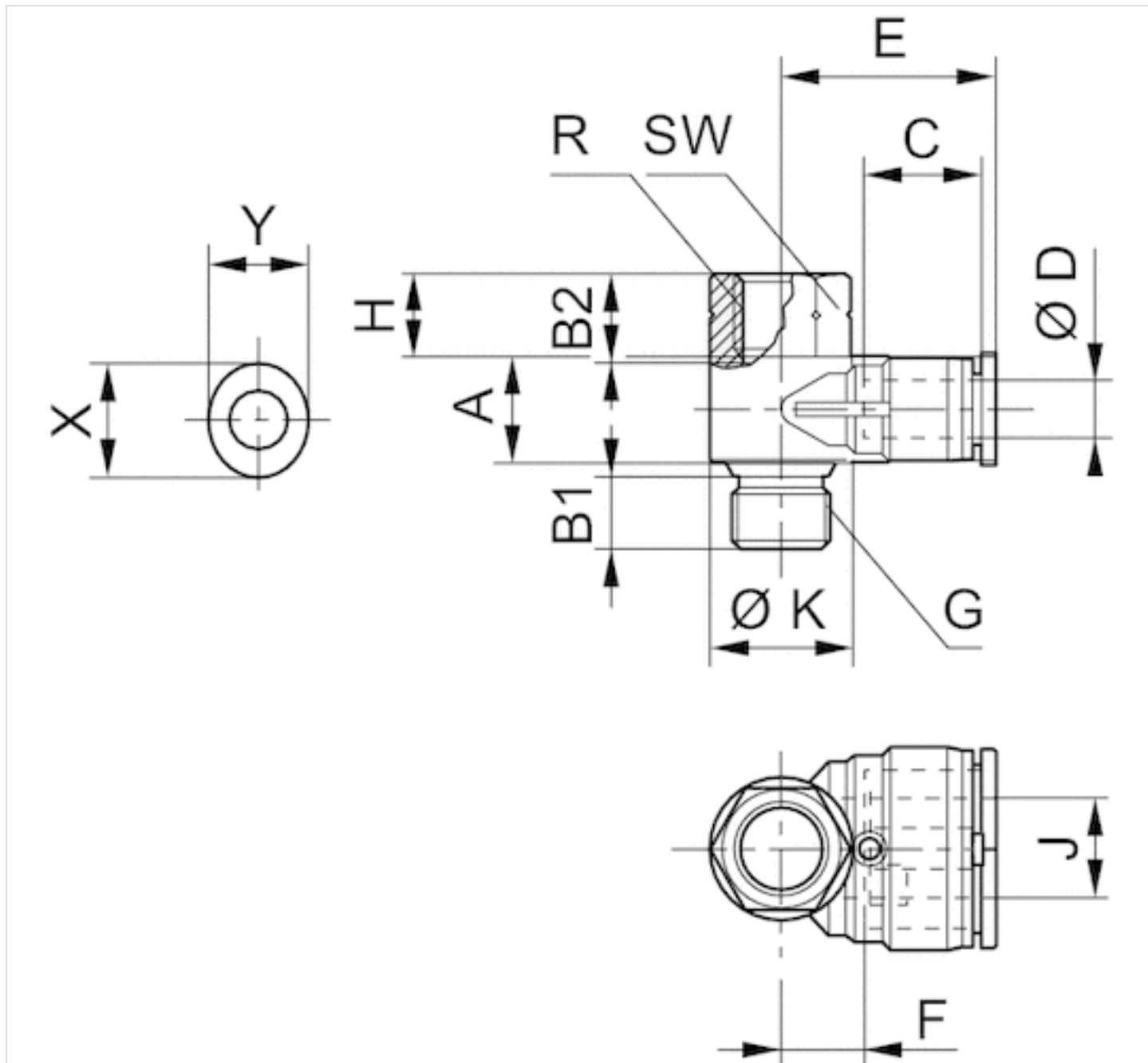
## Technical information

Material	
Material	nickel-plated
Housing	Polybutyleneterephthalate
Seal	Acrylonitrile butadiene rubber
Tooth lock washer	Stainless steel
Release ring	Polyoxymethylene

Material	
Release ring holder	Die cast zinc Brass, nickel-plated
Thread	Brass, nickel-plated

## Dimensions

### Dimensions



## Dimensions

Part No.	Port R	Port D	Port G	A	B1	B2	C	E	H	J	Ø K	SW	X	Y
R412005259	M5	Ø 4	M5	8.9	5.5	5	16	20.9	6.5	10	10	8	12	10
R412005260	G 1/8	Ø 6	R 1/8	14	8	9	17	26.7	9.5	12	15.5	14	14	12

Part No.	Port R	Port D	Port G	A	B1	B2	C	E	H	J	Ø K	SW	X	Y
R412005261	G 1/4	Ø 8	R 1/4	15	11	12	18.5	30.2	11.5	14	20	17	16	14
R412005262	G 3/8	Ø 10	R 3/8	18	12	13	21	34.3	13.5	17	23	22	19	17

# Efficient pneumatic solutions, our program: cylinders and drives, valves and valve systems, air supply management



Visit us: [Emerson.com/Aventics](https://www.emerson.com/Aventics)

Your local contact: [Emerson.com/contactus](https://www.emerson.com/contactus)



Emerson.com



Facebook.com/EmersonAutomationSolutions



LinkedIn.com/company/Emerson-Automation-Solutions



Twitter.com/EMR\_Automation

An example configuration is depicted on the title page. The delivered product may thus vary from that in the illustration. Subject to change. This Document, as well as the data, specifications and other information set forth in it, are the exclusive property of AVENTICS GmbH. It may not be reproduced or given to third parties without its consent. Only use the AVENTICS products shown in industrial applications. Read the product documentation completely and carefully before using the product. Observe the applicable regulations and laws of the respective country. When integrating the product into applications, note the system manufacturer's specifications for safe use of the product. The data specified only serve to describe the product. No statements concerning a certain condition or suitability for a certain application can be derived from our information. The information given does not release the user from the obligation of own judgement and verification. It must be remembered that the products are subject to a natural process of wear and aging.

The Emerson logo is a trademark and service mark of Emerson Electric Co. Brand logotype are registered trademarks of one of the Emerson family of companies. All other marks are the property of their respective owners. © 2020 Emerson Electric Co. All rights reserved.  
2020-12



## CONSIDER IT SOLVED™