



The Timken Company

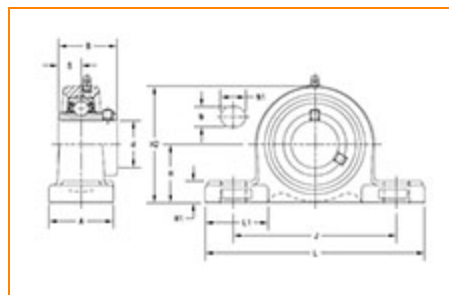
4500 Mt Pleasant St. NW

N. Canton, OH 44720

Phone: (234) 262-3000

E-Mail: CustomerCAD@timken.com • **Web site:** www.timken.com

Part Number UCP202, UCP 200 Pillow Block Housed Units - Set Screw Locking



[Specifications](#) | [Dimensions](#) | [Basic Load Ratings](#)

Specifications

Bearing Number	UC202
Shaft Size d	15 mm
Weight	1.30 lb 0.6 Kg
UPC Code	087796071070
Locking Style	Set Screw Locking
Housing Construction	Two-Bolt Pillow Block

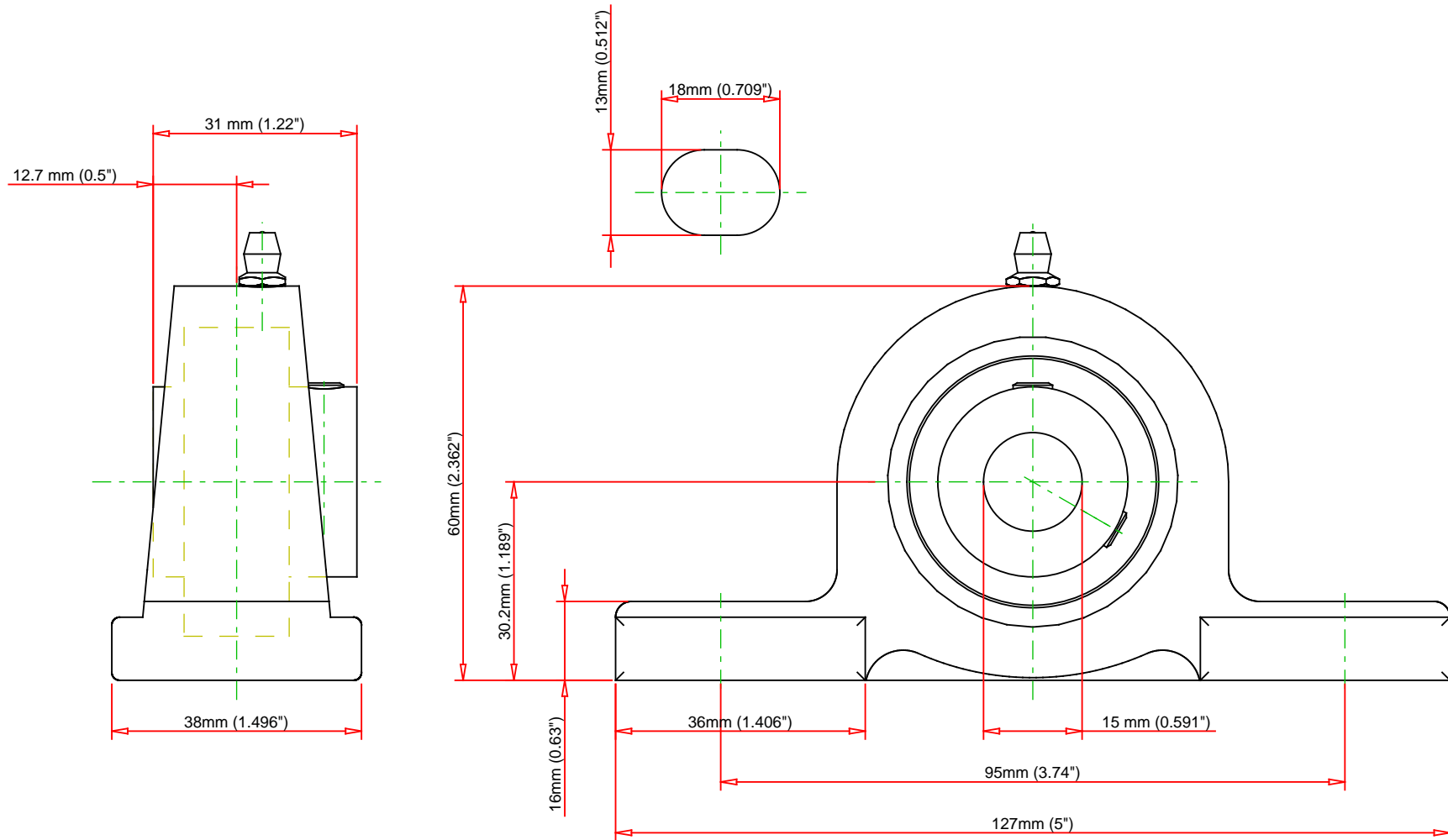
Dimensions

Base to Center Height H	30.2 mm 1.189 in
Total Length L	127.00 mm 5.000 in
Housing Width A	38.00 mm 1.496 in

	1.470 in
Bolt Hole Spacing J	95.00 mm 3.740 in
Bolt Hole Size N	13.00 mm 0.512 in
Bolt Hole Length N1	18.00 mm 0.709 in
Foot Height H1	16.00 mm
Total Height H2	60.00 mm 2.362 in
Dimension L1	36 mm 1.406 in
Inner Ring Width B	31.00 mm 1.220 in
Center of Bearing from End S	12.7 mm 0.500 in

Basic Load Ratings

Static Load Rating	1495 lbf 6650 N
Dynamic Load Rating	2878 lbf 12800 N



Bearing Number	UC202			
Load Ratings - C _r	2878	lbf	12800	N
Load Ratings - C _{0r}	1495	lbf	6650	N
Weight	1.3	lb	0.6	kg
Bolt Size	M10			

TIMKEN

THE TIMKEN COMPANY
NORTH CANTON, OHIO USA

UCP202

UCP 200 Pillow Block Housed Units - Set
Screw Locking

Every reasonable effort has been made to ensure the accuracy of the information contained in this writing, but no liability is accepted for errors, omissions or for any other reason.

FOR DISCUSSION ONLY