

# Speed Controller for Clean Room

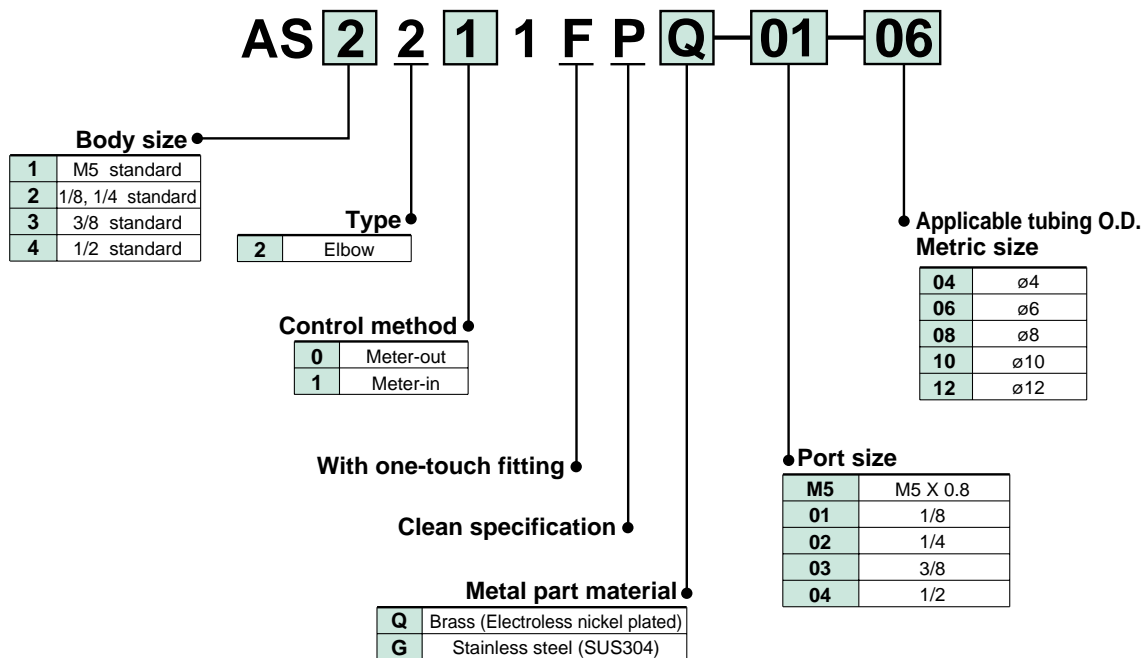
Series **AS-FPQ/FPG**

**Elbow Type**

■ Applicable tubing O.D.: **Metric Size**

**Clean**

## How to Order



**AS-FPQ/Brass (Electroless nickel plated)**  
Release button color: Light grey



**AS-FPG/Stainless steel (SUS304)**  
Release button color: Light blue



## Model

Port size	Applicable tubing O.D.					Applicable cylinder tubing I.D. mm	Elbow type	
	Metric size						Meter-out	Meter-in
	4	6	8	10	12			
M5 X 0.8	●	●				6, 10, 16, 20	AS1201FP□-M5	AS1211FP□-M5
R1/8	●	●	●			20, 25, 32	AS2201FP□-01	AS2211FP□-01
R1/4	●	●	●	●		20, 25, 32, 40	AS2201FP□-02	AS2211FP□-02
R3/8		●	●	●	●	40, 50, 63	AS3201FP□-03	AS3211FP□-03
R1/2				●	●	63, 80, 100	AS4201FP□-04	AS4211FP□-04

## Specifications

Particle generation grade	Grade 1 <sup>Note 1)</sup>
Proof pressure (20°C)	1.5MPa
Max. operating pressure (20°C)	1MPa <sup>Note 2)</sup>
Min. operating pressure	0.1MPa
Ambient and fluid temperature	-5 to 60°C (With no condensation)
Number of needle rotations	10 rotations (8 rotations <sup>Note 3)</sup> )

Note 1) Refer to the particle generation grading chart.

Note 2) The max. operating pressure is one at 20°C.

Note 3) AS12□1FP□

## Recommended Applicable Tubing

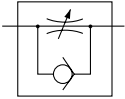
Tubing material	Clean series polyurethane tubing: Series 10-
Tubing O.D.	ø4, ø6, ø8, ø10, ø12

Polyurethane tubing: Series TU, Nylon tubing: Series T,  
Soft nylon tubing: Series TS can also be used though with lower degree of cleanliness.

## Elbow Type

## AS-FPQ/FPG

JIS symbol



### AS-FPQ/Brass (Electroless Nickel Plated)

Applicable tubing O.D. mm	Connection thread	Model	
		Elbow type	
		Meter-out	Meter-in
4	M5 X 0.8	AS1201FPQ-M5-04	AS1211FPQ-M5-04
	R1/8	AS2201FPQ-01-04	AS2211FPQ-01-04
	R1/4	-02-04	-02-04
6	M5 X 0.8	AS1201FPQ-M5-06	AS1211FPQ-M5-06
	R1/8	AS2201FPQ-01-06	AS2211FPQ-01-06
	R1/4	-02-06	-02-06
	R3/8	AS3201FPQ-03-06	AS3211FPQ-03-06
8	R1/8	AS2201FPQ-01-08	AS2211FPQ-01-08
	R1/4	-02-08	-02-08
	R3/8	AS3201FPQ-03-08	AS3211FPQ-03-08
10	R1/4	AS2201FPQ-02-10	AS2211FPQ-02-10
	R3/8	AS3201FPQ-03-10	AS3211FPQ-03-10
	R1/2	AS4201FPQ-04-10	AS4211FPQ-04-10
12	R3/8	AS3201FPQ-03-12	AS3211FPQ-03-12
	R1/2	AS4201FPQ-04-12	AS4211FPQ-04-12

### AS-FPG/Stainless Steel (SUS304)

Applicable tubing O.D. mm	Connection thread	Model	
		Elbow type	
		Meter-out	Meter-in
4	M5 X 0.8	AS1201FPG-M5-04	AS1211FPG-M5-04
	R1/8	AS2201FPG-01-04	AS2211FPG-01-04
	R1/4	-02-04	-02-04
6	M5 X 0.8	AS1201FPG-M5-06	AS1211FPG-M5-06
	R1/8	AS2201FPG-01-06	AS2211FPG-01-06
	R1/4	-02-06	-02-06
	R3/8	AS3201FPG-03-06	AS3211FPG-03-06
8	R1/8	AS2201FPG-01-08	AS2211FPG-01-08
	R1/4	-02-08	-02-08
	R3/8	AS3201FPG-03-08	AS3211FPG-03-08
10	R1/4	AS2201FPG-02-10	AS2211FPG-02-10
	R3/8	AS3201FPG-03-10	AS3211FPG-03-10
	R1/2	AS4201FPG-04-10	AS4211FPG-04-10
12	R3/8	AS3201FPG-03-12	AS3211FPG-03-12
	R1/2	AS4201FPG-04-12	AS4211FPG-04-12