



The Timken Company

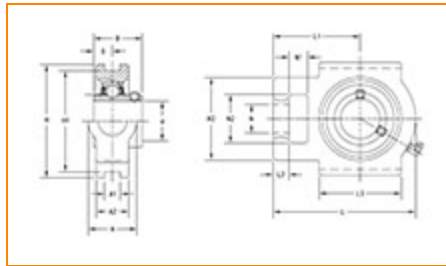
4500 Mt Pleasant St. NW

N. Canton, OH 44720

Phone: (234) 262-3000

E-Mail: CustomerCAD@timken.com • **Web site:** www.timken.com

Part Number UCT307, UCT 300 Take-Up Mounted Bearings - Set Screw Locking



[Specifications](#) | [Dimensions](#) | [Basic Load Ratings](#)

Specifications

Bearing Number	UC307
Shaft Size d	35 mm
Locking Style	Set Screw Locking
Housing Construction	Take-Up

Dimensions

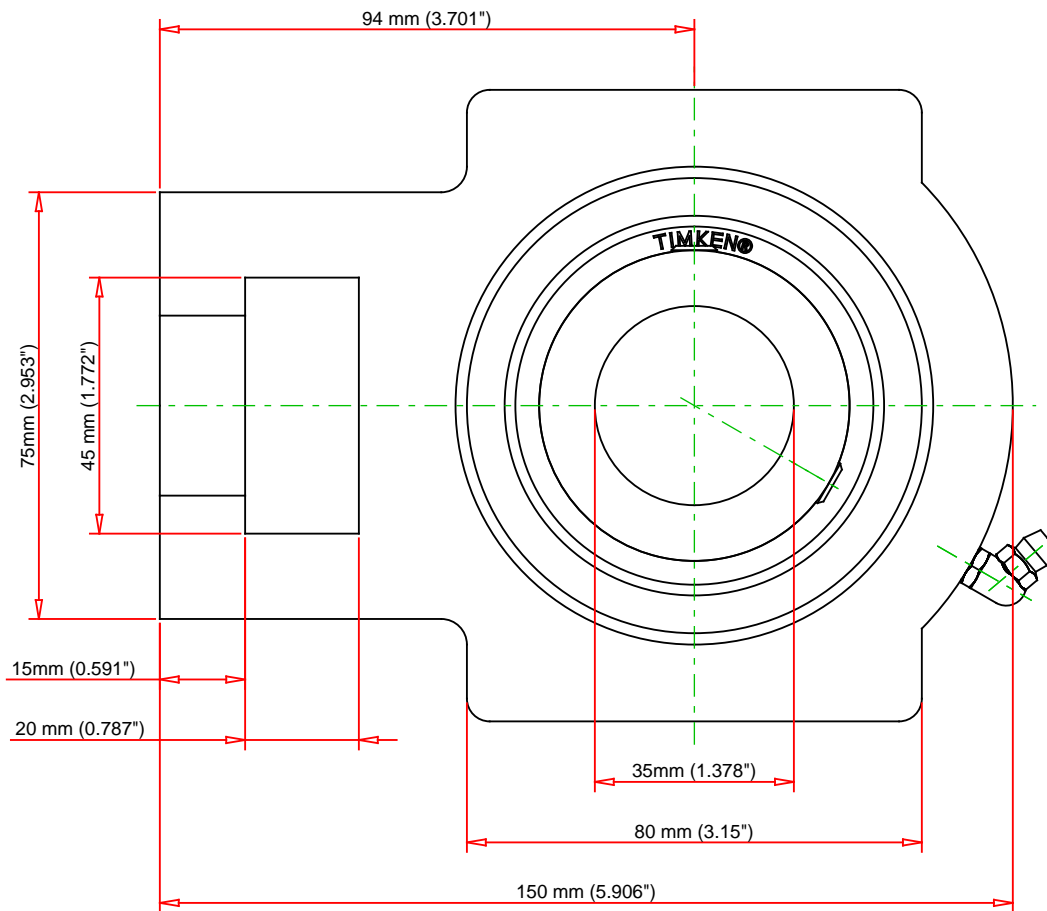
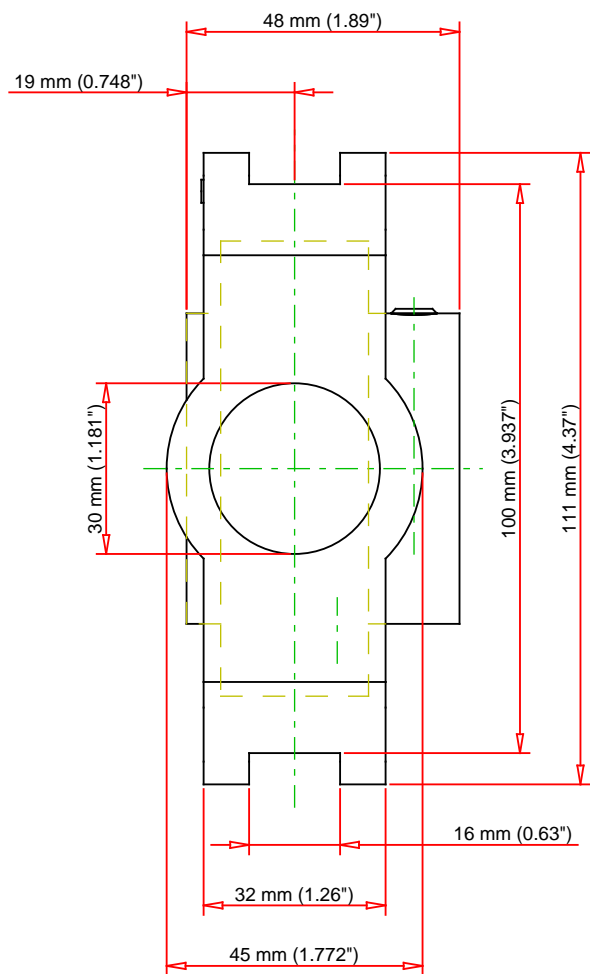
Housing Width A	45 mm 1.772 in
Slot Width A1	16 mm 0.63 in
Slot Width A2	32 mm 1.26 in



Total Height H	111 mm 4.37 in
Pitch Height H1	100 mm
Height H2	75 mm
Total Length L	150 mm 5.906 in
Shaft Length L1	94 mm 3.701 in
Dimension L2	15 mm
Slot Length L3	80 mm 3.15 in
Adjustment Screw Bore N	30 mm 1.181 in
Opening Width N1	20 mm 0.787 in
Opening Height N2	45 mm 1.772 in
Inner Ring Width B	48 mm 1.890 in
Center of Bearing from End S	19 mm 0.748 in
Grease Nipple Size	B-1/4-28UNF

Basic Load Ratings

Static Load Rating	19300 N 4339 lbf
Dynamic Load Rating	33400 N 7509 lbf



Bearing Number	UCT307			
Load Ratings - C _r	7509	lbf	33400	N
Load Ratings - C _{0r}	4339	lbf	19300	N
Weight	5.1	lb	2.3	kg

TIMKEN

THE TIMKEN COMPANY
NORTH CANTON, OHIO USA

UCT307

UCT 300 Take-Up Mounted Bearings - Set
Screw Locking

Every reasonable effort has been made to ensure the accuracy of the information contained in this writing, but no liability is accepted for errors, omissions or for any other reason.

FOR DISCUSSION ONLY