



**The Timken Company**

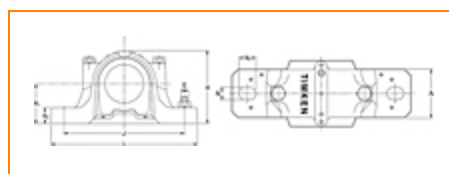
4500 Mt Pleasant St. NW

N. Canton, OH 44720

**Phone:** (234) 262-3000

**E-Mail:** [CustomerCAD@timken.com](mailto:CustomerCAD@timken.com) • **Web site:** [www.timken.com](http://www.timken.com)

## Housing – Bearing – Seal SNT 507-606 - 22207K - TSNG507, SNT Taper Bore Plummer Block Housed Units



[Types of Components](#) | [Housing](#) | [Bearing](#) | [Dimensions](#) | [Specifications](#)

### Types of Components

Housing	SNT 507-606
Bearing	22207K
Locating Rings (width x OD)	SR72X5.5
Seal Type	Double Lip
Seal	TSNG507
Adapter Sleeve <sup>1</sup>	H307
Locknut	KM7
Lockwasher	MB7
End Cover <sup>2</sup>	EC507-606

### Housing

<b>Material</b>	Cast Iron
<b>Housing Mass</b>	2.2 Kg
<b>Bolt Qty</b>	2

## Bearing

<b>Cage Type</b>	EJ
<b>C1 Dynamic Load Rating</b>	90.5
<b>C0 Static Load Rating</b>	88
<b>Max Oil Speed</b>	8600
<b>Max Grease Speed</b>	6900

## Dimensions

<b>Shaft Diameter d</b>	30 mm
<b>A</b>	82.00 mm
<b>A1</b>	52 mm
<b>G</b>	M12
<b>H</b>	93 mm
<b>H1</b>	50 mm
<b>H2</b>	22.00 mm
<b>J</b>	150.00 mm
<b>Jmax</b>	157 mm
<b>Jmin</b>	143 mm
<b>L</b>	185.00 mm
<b>N</b>	15 mm

N1

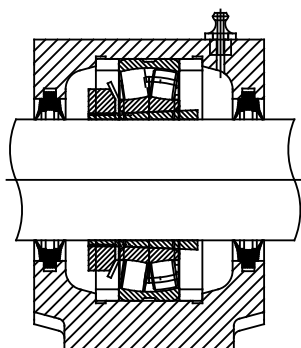
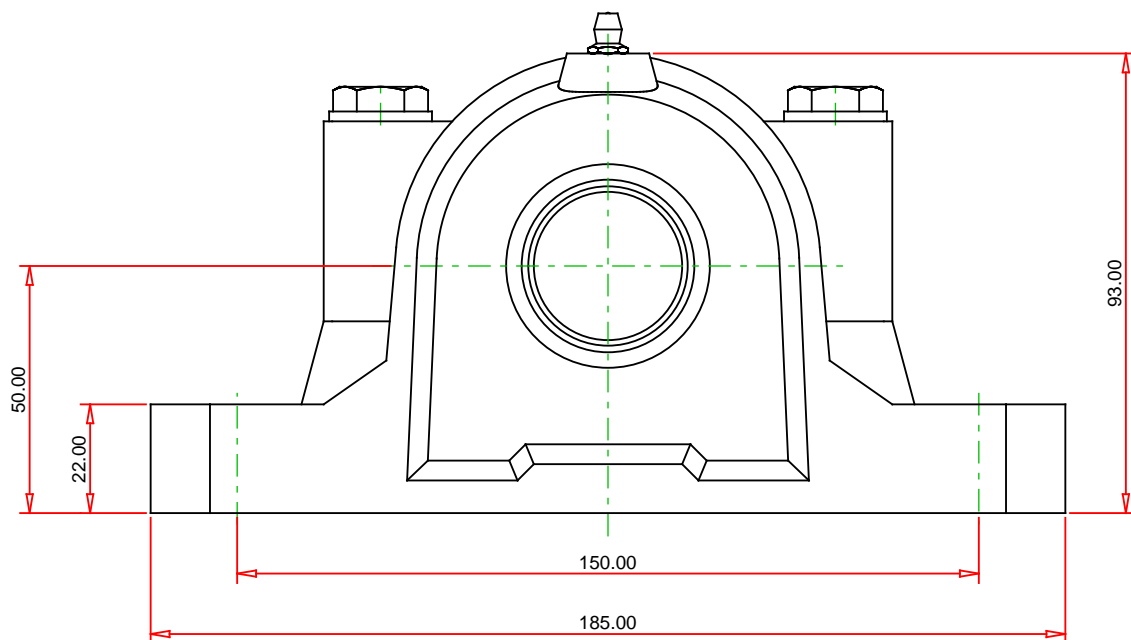
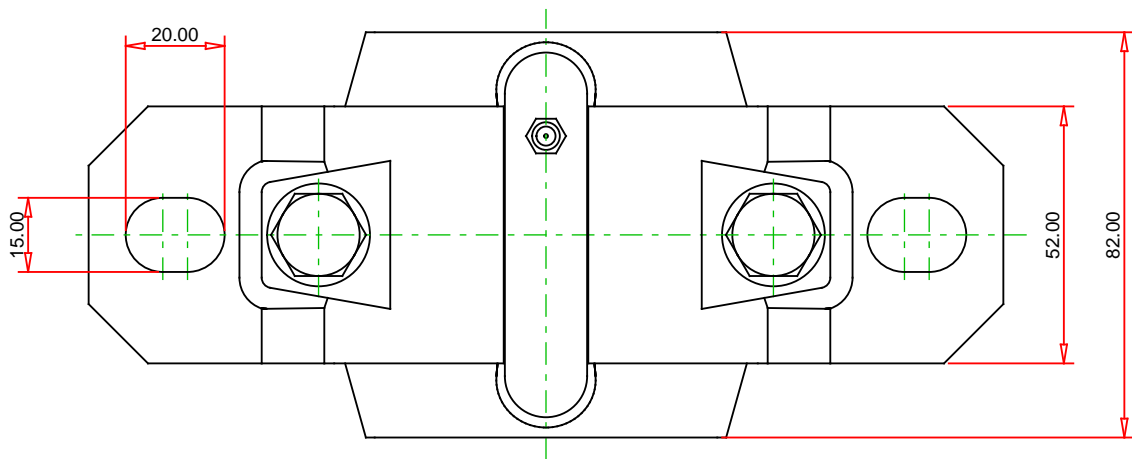
20.00 mm

Specifications

UPC Code	999999999
Alternate Part Name	SNT507-606 - 22207K - TSNG507

<sup>1</sup> Purchase the Adapter Sleeve separately

<sup>2</sup> Two seals are required for a thru shaft application. One end cover can be used if application is not a thru shaft design. In this case, only one seal is required.



Note: Section View not to Scale

## METRIC UNITS

Housing  
Bearing  
Seal (Quantity 2)  
Seal Type  
Locating Ring (Quantity 2)  
Adapter Sleeve  
(includes 1 sleeve, 1 locknut  
and 1 lockwasher)

SNT 507-606  
22207K  
TSNG507  
Double Lip  
SR72X5.5  
H307

**TIMKEN®**

**THE TIMKEN COMPANY**  
NORTH CANTON, OHIO USA

**SNT 507-606 - 22207K - TSNG507**  
SNT Taper Bore Plummer Block Housed Units

C1 Dynamic Load Rating (2 rows)	90.5 kN
C0 Static Load Rating	88 kN
Max Oil Speed	8600 RPM
Max Grease Speed	6900 RPM
Material	Cast Iron

Every reasonable effort has been made to ensure the accuracy of the information contained in this writing, but no liability is accepted for errors, omissions or for any other reason.

**FOR DISCUSSION ONLY**