

## 1 Main Valve Fluororubber Specification

Symbol  
**-X90**

Fluororubber is used for rubber parts of the main valve to allow use in applications such as the following.

- When using a lubricant other than the recommended turbine oil, and there is a possibility of malfunction due to swelling of the spool valve seals.

Applicable valves series SY3□<sup>0</sup>/<sub>3</sub>0, SY5□<sup>0</sup>/<sub>3</sub>0, SY7□<sup>0</sup>/<sub>3</sub>0 (Only rubber seal type)

SY<sup>3</sup>/<sub>5</sub>/<sub>7</sub> □<sup>0</sup>/<sub>3</sub> 0 □ □ □ □ - □ □ □ 1 - □ □ - □ -X90

- Entry is the same as standard products.  
Specifications and performance are the same as standard products.

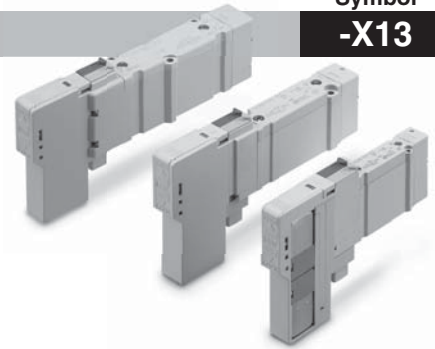
## 2 With Safety Slide Locking Manual Override

Symbol  
**-X13**

A safety lock is added to the slide locking manual override.  
(Refer to Features 4.)

SY<sup>3</sup>/<sub>5</sub>/<sub>7</sub> □<sup>00</sup>/<sub>31</sub> □ □ □ □ - □ □ G1 - □ -X13

- Entry is the same as standard products.  
Specifications and performance are the same as standard products.



## 3 Metal Seal Valve, Main/Pilot Valve Common Exhaust

Symbol  
**-X16**

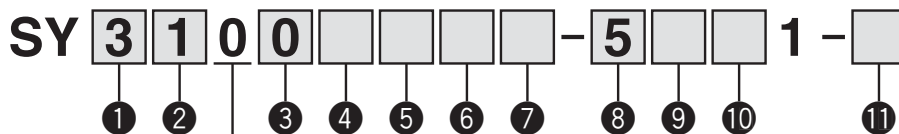
This is the type where the exhaust method of the pilot valve is integrated into the exhaust port of the main valve.

SY<sup>3</sup>/<sub>5</sub>/<sub>7</sub> □<sup>0</sup>/<sub>3</sub> 1 □ □ □ □ - □ □ □ 1 - □ □ -X16

- Entry is the same as standard products.  
\* Note that the response time of the valve becomes slower than standard products.  
Please contact SMC for details.

## How to Order Valves (With mounting screw)

Refer to page 3 for valve specifications.



### 1 Series

3	SY3000
5	SY5000
7	SY7000

### 2 Type of actuation

1	2-position	Single
2		Double
3	3-position	Closed centre
4		Exhaust centre
5		Pressure centre
A*	4-position	N.C./N.C.
B*	dual 3-port	N.O./N.O.
C*		N.C./N.O.

\* Only rubber seal type is available for the 4-position dual 3-port valve.

### 3 Seal type

0	Rubber seal
1	Metal seal

### 4 Pilot type

—	Internal pilot
R	External pilot

### 5 Back pressure check valve (Built-in valve type)

—	None
H	Built-in

\* Only rubber seal type  
\* Back pressure check valve is not available for the 3-position type and the SY7000.

### 6 Pilot valve option

—	Standard (0.7 MPa)
B	Quick response type (0.7 MPa)
K*	High pressure type (1.0 MPa)

\* Only metal seal type is available for the high pressure type.

### 7 Coil type

—	Standard
T	With power saving circuit (Continuous duty type)

\* Be sure to select the power saving circuit type when the valve is continuously energized for long periods of time.  
\* Be careful of the energizing time when the power saving circuit is selected. Refer to page 244 for details.

### 8 Rated voltage

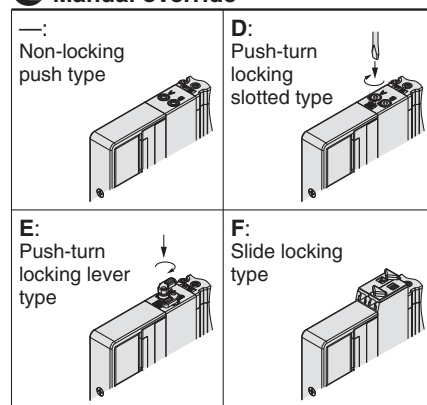
5	24 VDC
6	12 VDC

### 9 Light/surge voltage suppressor and common specification

Symbol	With light	Surge voltage suppressor	Common specification
—	—	—	Non-polar
R	—	●	
U	●		
S	—		
Z	●		Positive common
NS	—	●	Negative common
NZ	●		

\* Only "Z" and "NZ" types are available for with the power saving circuit.

### 10 Manual override



\* Refer to page 14 for with the safety slide locking manual override.

### 11 Type of mounting screw

—	Round head combination screw
B	Hexagon socket head cap screw
K	Round head combination screw (Falling-out-prevention type)
H	Hexagon socket head cap screw (Falling-out-prevention type)

\* For "K" and "H", the valve body cover has a drop prevention construction to stop the mounting screws from falling out when the valve is removed for maintenance etc.  
\* When ordering a valve individually, the base gasket is not included. Since the base gasket is attached to the manifold, please order the base gasket separately if it is needed for maintenance service.  
Refer to page 73 for part numbers of the base gasket and mounting screw.  
\* "B" and "H" cannot be selected for the individual SUP/EXH spacer assembly, interface regulator or double check spacer assembly with residual pressure release valve.