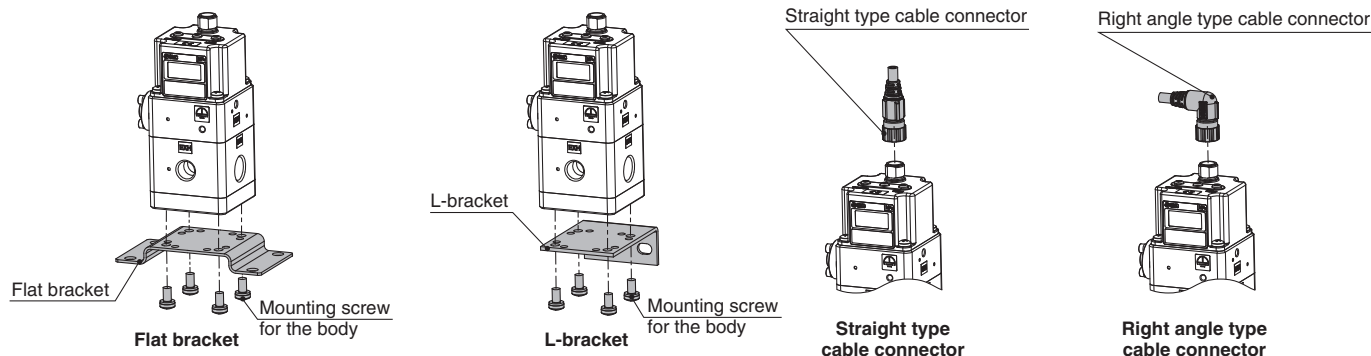


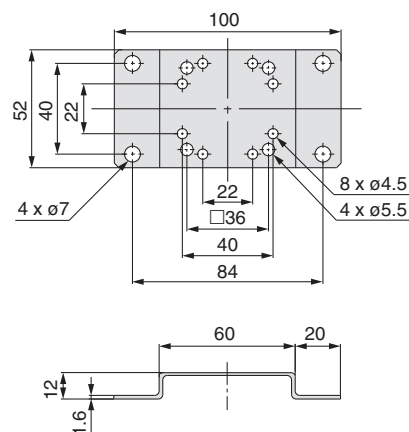
Accessories (Option)/Part No.

Description		Part no.
Flat bracket assembly (including mounting screws)		KT-ITV-F2
L-bracket assembly (including mounting screws)		KT-ITV-L2
Power cable connector	Straight type 3 m	P398020-500-3
	Right angle type 3 m	P398020-501-3

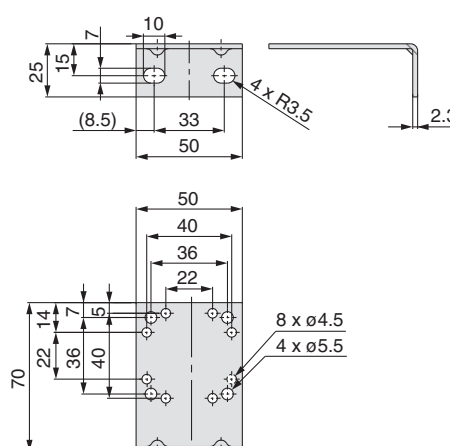


Dimensions

Flat bracket



L-bracket



Working Principle

When the input signal rises, the **air supply solenoid valve** ① turns ON, and the **exhaust solenoid valve** ② turns OFF. Therefore, supply pressure regulated by a **built-in regulator** ③ passes through the **air supply solenoid valve** ① and is applied to the **pilot chamber** ④. The pressure in the **pilot chamber** ④ increases and operates on the upper surface of the **diaphragm** ⑤.

As a result, the **air supply valve** ⑥ linked to the **diaphragm** ⑤ opens, and a portion of the supply pressure becomes output pressure.

This output pressure feeds back to the **control circuit** ⑧ via the **pressure sensor** ⑦. Here, a correct operation functions until the output pressure is proportional to the input signal, making it possible to always obtain output pressure proportional to the input signal.

Working Principle Diagram

