



The Timken Company

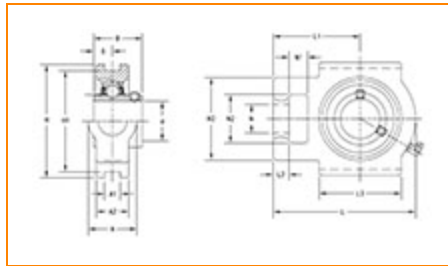
4500 Mt Pleasant St. NW

N. Canton, OH 44720

Phone: (234) 262-3000

E-Mail: CustomerCAD@timken.com • **Web site:** www.timken.com

Part Number UCT306, UCT 300 Take-Up Mounted Bearings - Set Screw Locking



[Specifications](#) | [Dimensions](#) | [Basic Load Ratings](#)

Specifications

Bearing Number	UC306
Shaft Size d	30 mm
Locking Style	Set Screw Locking
Housing Construction	Take-Up

Dimensions

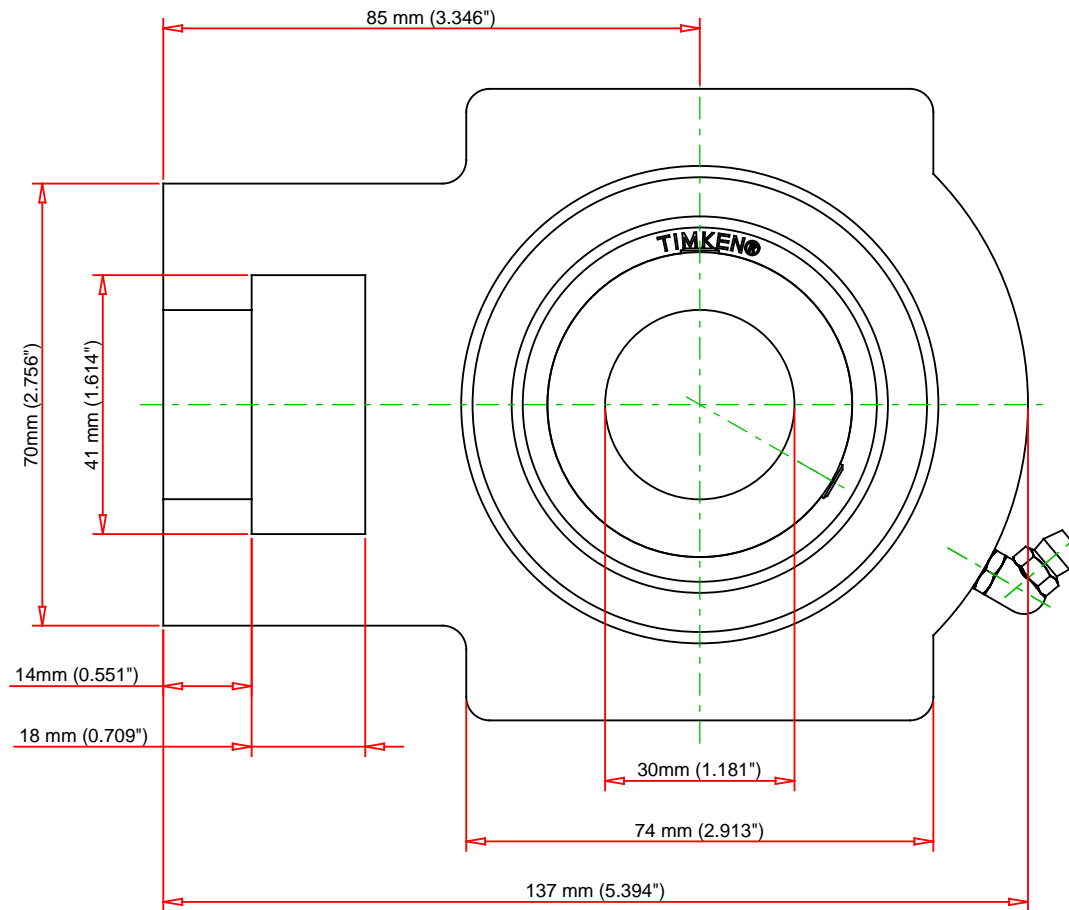
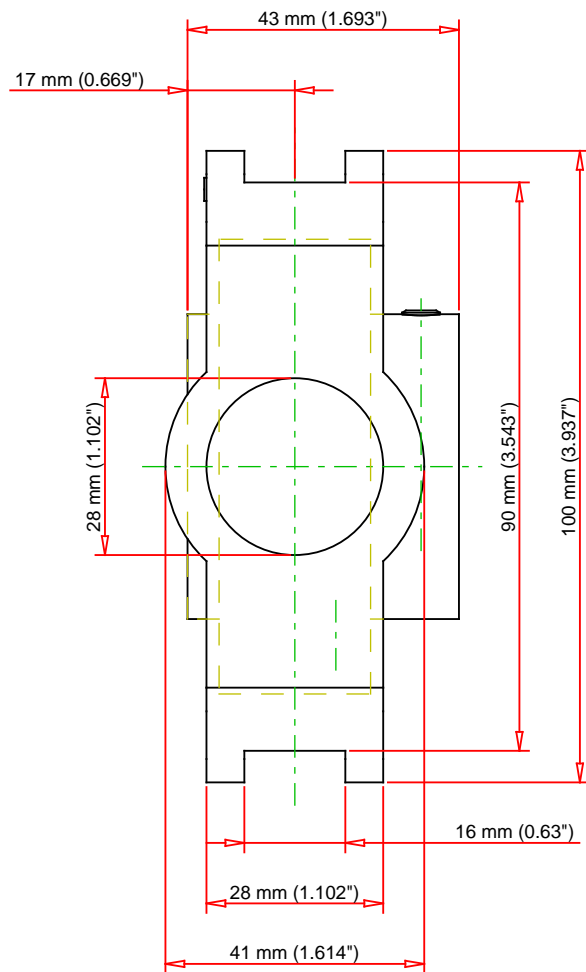
Housing Width A	41 mm 1.614 in
Slot Width A1	16 mm 0.63 in
Pocket Width A2	28 mm 1.102 in



Total Height H	100 mm 3.937 in
Pitch Height H1	90 mm
Height H2	70 mm
Total Length L	137 mm 5.394 in
Shaft Length L1	85 mm 3.346 in
Dimension L2	14 mm
Slot Length L3	74 mm 2.913 in
Adjustment Screw Bore N	28 mm 1.102 in
Opening Width N1	18 mm 0.709 in
Opening Height N2	41 mm 1.614 in
Inner Ring Width B	43 mm 1.693 in
Center of Bearing from End S	17 mm 0.669 in
Grease Nipple Size	B-1/4-28UNF

Basic Load Ratings

Static Load Rating	15000 N 3372 lbf
Dynamic Load Rating	26700 N 6002 lbf



Bearing Number	UC306			
Load Ratings - C _r	6002	lbf	26700	N
Load Ratings - C _{0r}	3372	lbf	15000	N
Weight	4	lb	1.8	kg

TIMKEN

THE TIMKEN COMPANY
NORTH CANTON, OHIO USA

UCT306

UCT 300 Take-Up Mounted Bearings - Set
Screw Locking

Every reasonable effort has been made to ensure the accuracy of the information contained in this writing, but no liability is accepted for errors, omissions or for any other reason.

FOR DISCUSSION ONLY