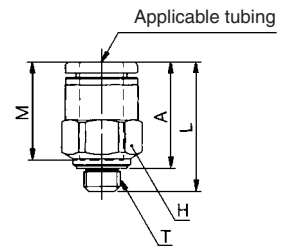


### Male Connector: KJH

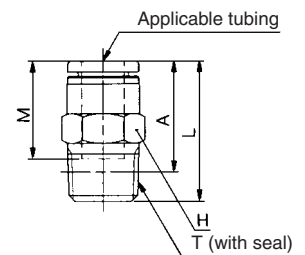
<10-32 UNF>	Applicable tubing O.D. (inch)	Connection thread (T) UNF NPT	Model	H (Width across flats)	L	A	M	Max. port size	Weight (g)
	1/8	10-32 UNF	KJH01-32	7	16.7	13.6	12.7	2.3	2
		1/16	KJH01-33S	9.5	18.8	14.8 *		2.5	5
		1/8	KJH01-34S	11.11	13.8	9.8 *		2.5	4.7
	5/32	10-32 UNF	KJH03-32	8	17	13.9	12.7	2.3	2.4
		1/16	KJH03-33S	9.5	19.5	15.5 *		3	4.7
		1/8	KJH03-34S	11.11	14.8	10.8 *		3	4.6
<NPT>	1/4	10-32 UNF	KJH07-32		18.4	15.3	13.6	2.3	3.3
		1/16	KJH07-33S	11.11	22	18 *		3.5	6.2
		1/8	KJH07-34S		18.4	14.4 *		4.6	5.2

\* Reference dimensions after NPT thread installation.

<10-32 UNF>



<NPT>

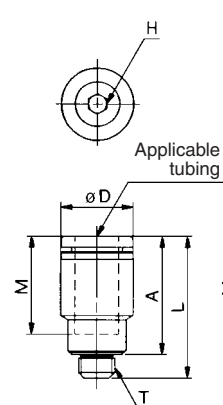


### Hexagon Socket Head Male Connector: KJS

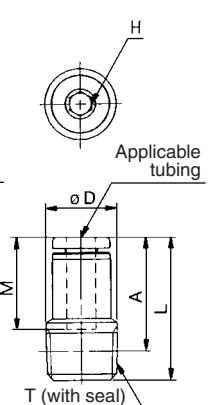
<10-32 UNF>	Applicable tubing O.D. (inch)	Connection thread (T) UNF NPT	Model	H (Width across flats)	Note) øD	L	A	M	Min. port size	Weight (g)
	1/8	10-32 UNF	KJS01-32	2	7	19.7	16.6	12.7	2	2.8
		10-32 UNF	KJS03-32	2.5	8	18.7	15.6	12.7	2.5	2.7
		1/16	KJS03-33S							4
	5/32	1/16	KJS03-33S	2.78	10.3	19.6	15.6 *	12.7	2.8	5.4
		1/8	KJS03-34S							
	1/4	10-32 UNF	KJS07-32	2.5	10.3	19.6	16.5	13.6	2.5	3.3
		1/16	KJS07-33S	3.57		21.1	17.1 *		3.6	5.8
		1/8	KJS07-34S	4.76		20.1	16.1 *		4.8	5.2

\* Reference dimensions after NPT thread installation.  
Note) øD: Max. diameter

<10-32 UNF>



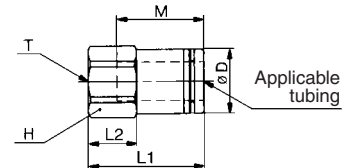
<NPT>



### Female Connector: KJF

Applicable tubing O.D. (inch)	Connection thread (T) UNF	Model	H (Width across flats)	Note) øD	L1	L2	M	Min. port size	Weight (g)
1/8	10-32 UNF	KJF01-32	7	6.9	18.8	7.9	12.7	2.5	2.8
5/32	10-32 UNF	KJF03-32	8	7.9	18.7	7.8	12.7	3	3.8
1/4	10-32 UNF	KJF07-32	11.11	10.3	18	7.5	13.6	4	5.3

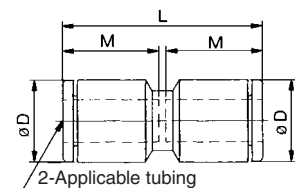
Note) øD: Max. diameter



### Straight Union: KJH

Applicable tubing O.D. (inch)	Model	Note) øD	L	M	Min. port size	Weight (g)
1/8	KJH01-00	8.4	26.3	12.7	2.5	1.4
5/32	KJH03-00	9.3	26.3	12.7	3	1.7
1/4	KJH07-00	12	28.1	13.6	4.6	2.6

Note) øD: Max. diameter



# Miniature One-touch Fittings

## Inch-size One-touch Mini

# Series KJ

Applicable Tubing :  $\phi 1/8''$ ,  $\phi 5/32''$ ,  $\phi 1/4''$

Connection Thread : 10-32 UNF, NPT 1/16, NPT 1/8

K□  
M□  
H□  
D□  
MS  
T□  
VMG

**Guide 1**  
**Guide 2**  
**Chuck**

Suitable for use with nylon, soft nylon and urethane.  
Large retaining force.  
Has large retaining force.

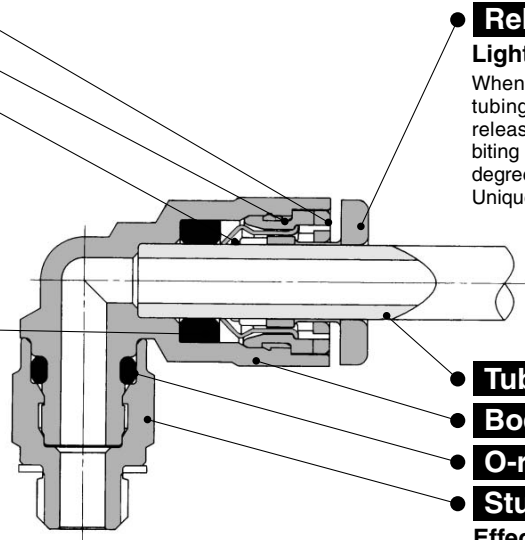
**Seal**

Can be used for a wide range of pressures from a low vacuum up to a pressure of 1.0 MPa  
The use of a special profile ensures sealing and reduces resistance when the tube is inserted.

**Release button (Orange)**

**Light force for removal**

When the fitting is removed from the tubing, the chuck and collet are released, thus preventing them from biting into the tube to an unnecessary degree.  
Unique shape allows easy tube release.



**Tube**

**Body (White)**

**O-ring**

**Stud**

**Effective when piping in a confined space.**

- The body and the threaded portion can rotate (for positioning to some extent).
- Stud is electroless nickel plated.
- NPT 1/16, NPT 1/8 with sealant for thread

PAT.PEND

**Optimum piping in less space with 20% reduction of the outside**

**Thread seal is standard.**

**Copper-free specifications (Electroless nickel plated)**

**Possible to use from vacuum -100 kPa**



### Applicable Tubing

Tubing material	Nylon, Soft nylon, Polyurethane
Tubing O.D.	$\phi 1/8$ , $\phi 5/32$ , $\phi 1/4$

### Specifications

Fluid	Air/Water <sup>Note)</sup>	
Maximum operating pressure	1.0 MPa	
Operating vacuum pressure	-100 kPa	
Proof pressure	3.0 MPa	
Ambient and fluid temperature	-5 to 60°C (Water: 0 to 40°C) (No freezing)	
Thread	Mounting section	ANSI/ASME B1.20.1-1983 (NTP thread) JIS B 0212 2A, Class 2B (UNF thread)
	Nut section	JIS B 0212 2A, Class 2B (UNF thread)
Thread seal (Standard)	With thread seal	
Copper-free (Standard)	Brass parts are all electroless nickel plated.	

**Note)** Applicable for general industrial water. Please consult with SMC if using for other kinds of fluid.  
Also, the surge pressure must be under the maximum operating pressure.

### Principal Parts Material

Body	Stainless steel 303, C3604BD, PBT
Stud	C3604BD (Thread portion)
Chuck, Guide 2	Stainless steel 304
Release button, Guide 1	POM
Seal, O-ring	NBR
Gasket	Stainless steel 304, NBR