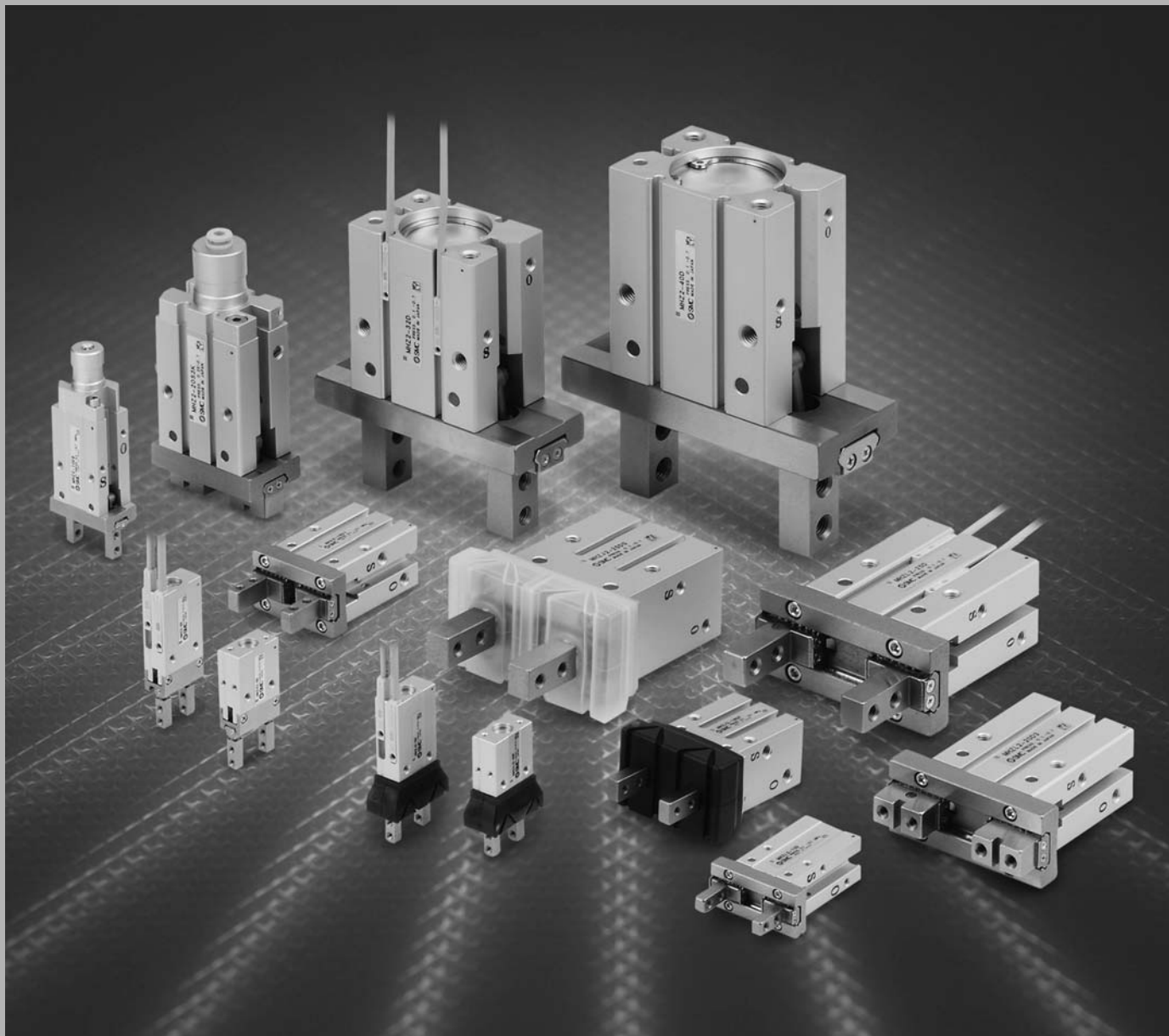


# Parallel Style Air Gripper

## Series MHZ



**MHZ**

**MHF**

**MHL**

**MHR**

**MHK**

**MHS**

**MHC**

**MHT**

**MHY**

**MHW**

**-X□**

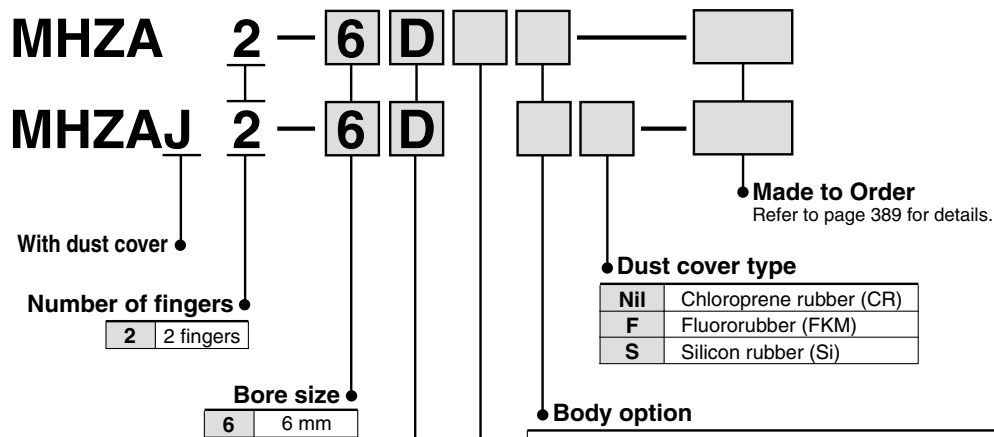
**MRHQ**

**MA**

**D-□**

# Parallel Style Air Gripper (Standard) Compact Series (Without Auto Switch) Series *MHZA2-6/MHZAJ2-6*

## How to Order

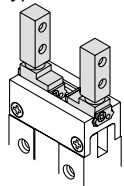


• Action •

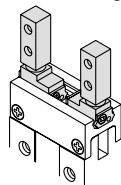
D	Double acting
S	Single acting (Normally open)
C	Single acting (Normally closed)

### Finger option •

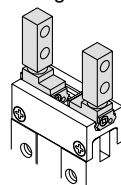
[Standard]  
Nil: Basic type



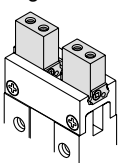
1: Side tapped mounting



2: Through-holes in opening/closing direction

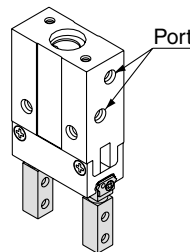


3: Flat type fingers

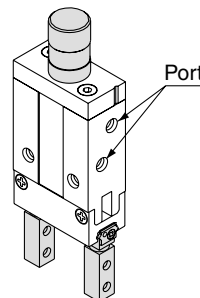


### • Body option

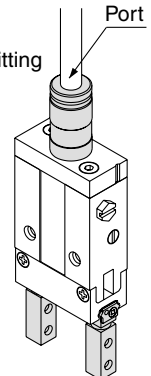
Nil: Basic type



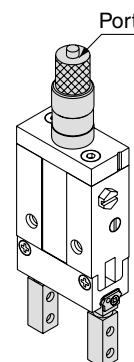
E: End boss type  
Side ported  
(Double acting/Single acting)



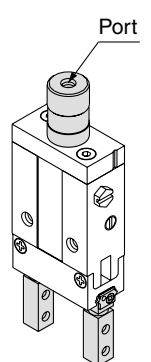
K: End boss type  
Axial ported  
with ø4 One-touch fitting  
(Single acting)



H: End boss type  
Axial ported  
with ø4 hose nipple  
(Single acting)



M: End boss type  
Axial ported  
with M3 port  
(Single acting)



# Parallel Style Air Gripper/Compact Series *Series MHZA2-6/MHZAJ2-6*



## Specifications

Operating pressure	Fluid		Air
	Double acting		0.15 to 0.7 MPa
	Single acting	Normally open Normally closed	0.3 to 0.7 MPa
Ambient and fluid temperature			-10 to 60°C
Repeatability			±0.01 mm
Max. operating frequency			180 c.p.m.
Lubrication			Not required
Action			Double acting/Single acting

\* Use the gripper with dust cover when used in a place where there may be dust.

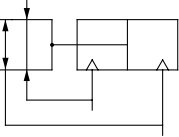
## Model

Action		Model	Bore size (mm)	Gripping force <sup>Note)</sup>		Opening/ Closing (Both sides) (mm)	Mass (g)
				Gripping force per finger Effective value (N)			
				External	Internal		
Double acting		MHZA2-6D	6	3.3	6.1	4	26
		MHZAJ2-6D	6			4	27
Single acting	Normally open	MHZA2-6S	6	1.9	—	4	26
		MHZAJ2-6S	6			4	27
	Normally closed	MHZA2-6C	6	—	3.7	4	26
		MHZAJ2-6C	6			4	27

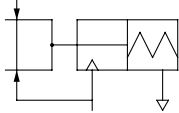
Note) Values based on pressure of 0.5 MPa, gripping point L = 20 mm, at center of stroke.

### JIS Symbol

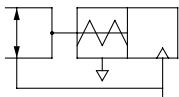
Double acting



Single acting type, Normally open



Single acting type, Normally closed



## Option

### ●Body Option/End Boss Type

Symbol	Piping port location	Type of piping port	Applicable model	
		MHZA2-6/MHZAJ2-6	Double acting	Single acting
Nil	Basic type	M3 x 0.5	●	●
E	Side ported	M3 x 0.5	●	●
K	Axial ported	With ø4 One-touch fitting	—	●
H		With ø4 hose nipple	—	●
M		M3 x 0.5	—	●



### Made to Order

(Refer to pages 683 to 713 for details.)

Symbol	Specifications/Description
-X4	Heat resistance (100°C)
-X5	Fluororubber seal
-X12	Opening direction spring assist
-X53	EPDM seal/Fluorine grease
-X56	Axial ported type
-X63	Fluorine grease
-X64	Finger: Side tapped mounting
-X65	Finger: Through-hole mounting
-X77A	Dust cover adhesion
-X77B	Dust cover adhesion (Finger part only)
-X78A	Dust cover caulking
-X78B	Dust cover caulking (Finger part only)
-X79	Grease for food

MHZ

MHF

MHL

MHR

MHK

MHS

MHC

MHT

MHY

MHW

-X□

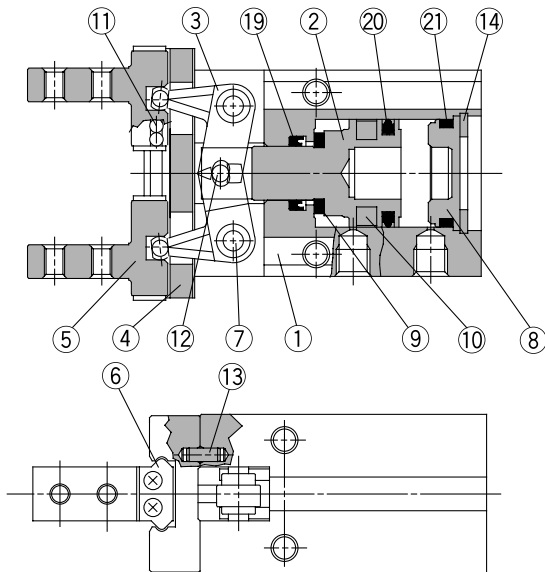
MRHQ

MA

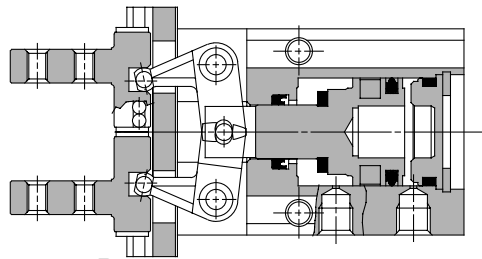
D-□

## Construction: MHZ2-10□ to 40□

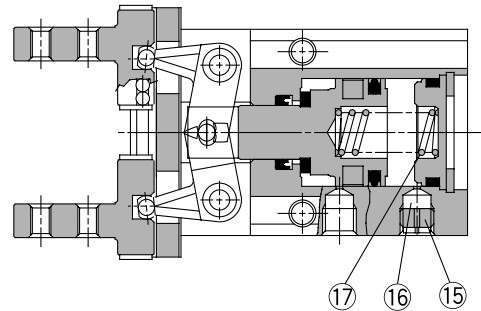
### Double acting/With fingers open



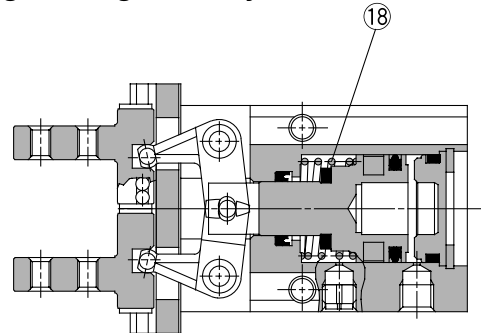
### Double acting/With fingers closed



### Single acting/Normally open



### Single acting/Normally closed



## Component Parts

No.	Description	Material	Note
1	Body	Aluminum alloy	Hard anodized
2	Piston	ø10, ø16: Stainless steel ø20 to ø40: Aluminum alloy	ø20 to ø40: Hard anodized
3	Lever	Stainless steel	Heat treated
4	Guide	Stainless steel	Heat treated
5	Finger	Stainless steel	Heat treated
6	Roller stopper	Stainless steel	
7	Lever shaft	Stainless steel	Nitriding
8	Cap	ø10 to ø25: Synthetic resin ø32, ø40: Aluminum alloy	ø32, ø40: Clear anodized
9	Bumper	Urethane rubber	
10	Rubber magnet	Synthetic rubber	

## Component Parts

No.	Description	Material	Note
11	Steel balls	High carbon chrome bearing steel	
12	Needle roller	High carbon chrome bearing steel	
13	Parallel pin	Stainless steel	
14	Type C retaining ring	Carbon steel	Nickel plated
15	Exhaust plug A	Brass	Electroless nickel plated
16	Exhaust filter A	Polyvinyl formal	
17	N.O. spring	Stainless steel spring wire	
18	N.C. spring	Stainless steel spring wire	
19	Rod seal	NBR	
20	Piston seal	NBR	
21	Gasket	NBR	

## Replacement Parts

Description		MHZ2-10	MHZ2-16	MHZ2-20	MHZ2-25	MHZ2-32	MHZ2-40	Main parts
Seal kit		MHZ10-PS	MHZ16-PS	MHZ20-PS	MHZ25-PS	MHZ32-PS	MHZ40-PS	⑱⑳㉑
Finger assembly	MHZ2-□□□(N)	MHZ-A1002(N)	MHZ-A1602(N)	MHZ-A2002(N)	MHZ-A2502(N)	MHZ-A3202	MHZ-A4002	④⑤⑥⑪⑬ Mounting screw
	MHZ2-□□□(N)1	MHZ-A1002(N)-1	MHZ-A1602(N)-1	MHZ-A2002(N)-1	MHZ-A2502(N)-1	MHZ-A3202-1	MHZ-A4002-1	
	MHZ2-□□□(N)2	MHZ-A1002(N)-2	MHZ-A1602(N)-2	MHZ-A2002(N)-2	MHZ-A2502(N)-2	MHZ-A3202-2	MHZ-A4002-2	
Piston assembly	MHZ2-□□□3	MHZ-A1002-3	MHZ-A1602-3	MHZ-A2002-3	MHZ-A2502-3	MHZ-A3202-3	MHZ-A4002-3	②⑨⑩⑫
	MHZ2-□□□□	MHZ-A1003	MHZ-A1603	MHZ-A2003	MHZ-A2503	MHZ-A3203	MHZ-A4003	
	MHZ2-□□□□S					MHZ-A3203S	MHZ-A4003S	
End boss assembly	MHZ2-□□□□W	MHZ-A1007	MHZ-A1607	MHZ-A2007	MHZ-A2507	—	—	Main body of adaptor, Mounting screw for adaptor, Seal kit
	MHZ2-□□□□K	MHZ-A1008	MHZ-A1608	MHZ-A2008	MHZ-A2508	—	—	
	MHZ2-□□□□M	MHZ-A1009	MHZ-A1609	MHZ-A2009	MHZ-A2509	—	—	
	MHZ2-□□□□E	MHZ-A1010	MHZ-A1610	MHZ-A2010	MHZ-A2510	—	—	

\* Finger option  
1 = Side tapped, 2 = Through-hole, 3 = Flat type fingers

\* End boss type

W = One-touch-fitting for coaxial tubing, K = With One-touch fitting, M = With M5 port, E = Side ported

\* The end boss assembly other than type E should be mounted on the special body.

Replacement part/Grease pack part no.: GR-S-005 (5 g)