

PF-23-2, PF-23-22 with follower piston at atmospheric pressure
manually actuated

Order No.	Number of outlet ports	Delivery rate [cm³]	
		per port/stroke P2	P3
PF-23-2	1	2.5 *	2.5 *
PF-23-22	2	1.25 **	1.25 **

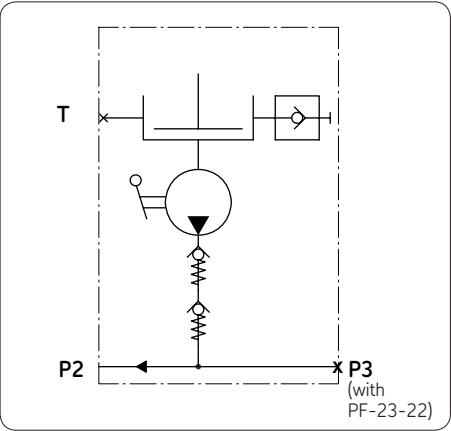
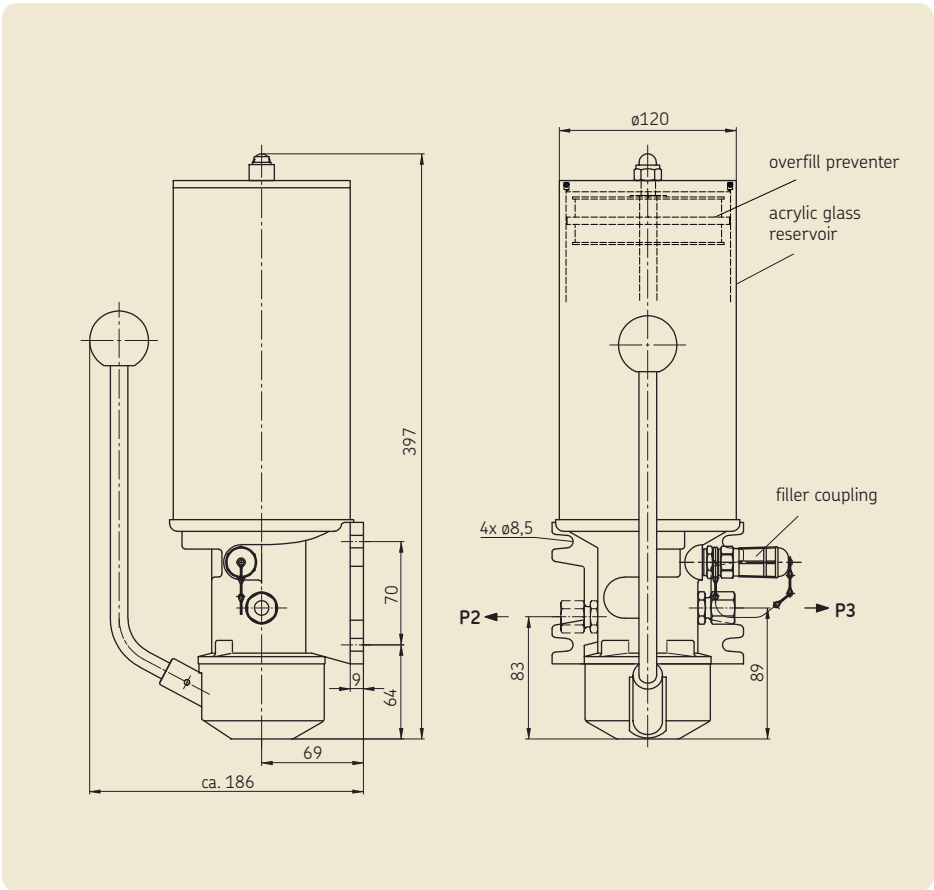
* Optional with P2 or P3
(one outlet port closed by plug)

** Both outlet ports have to be used.

Use connection fittings with cutting-sleeve screw unions to DIN 2353.

Technical data

Reservoir capacity. 1.5 kg
Reservoir Material. acrylic glass
Operating pressure with manual force ≈ 20 kg max. 100 bars
Lubricant grease up to NLGI grade 2
Temperature range +10 to +60 °C
Mounting position vertical



P2, P3 = main lines to system (ø 10 tubing)
T = return to tank

Grease topped up via filler coupling
Order No. for coupling socket: **995-001-500**
Order No. for grease topping-up pump: **169-000-004**

See important product usage information on the back cover.

PFH-23-2, PFH-23-22 with follower piston at atmospheric pressure
hydraulically actuated

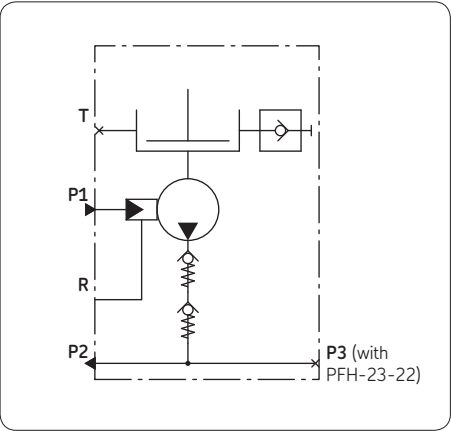
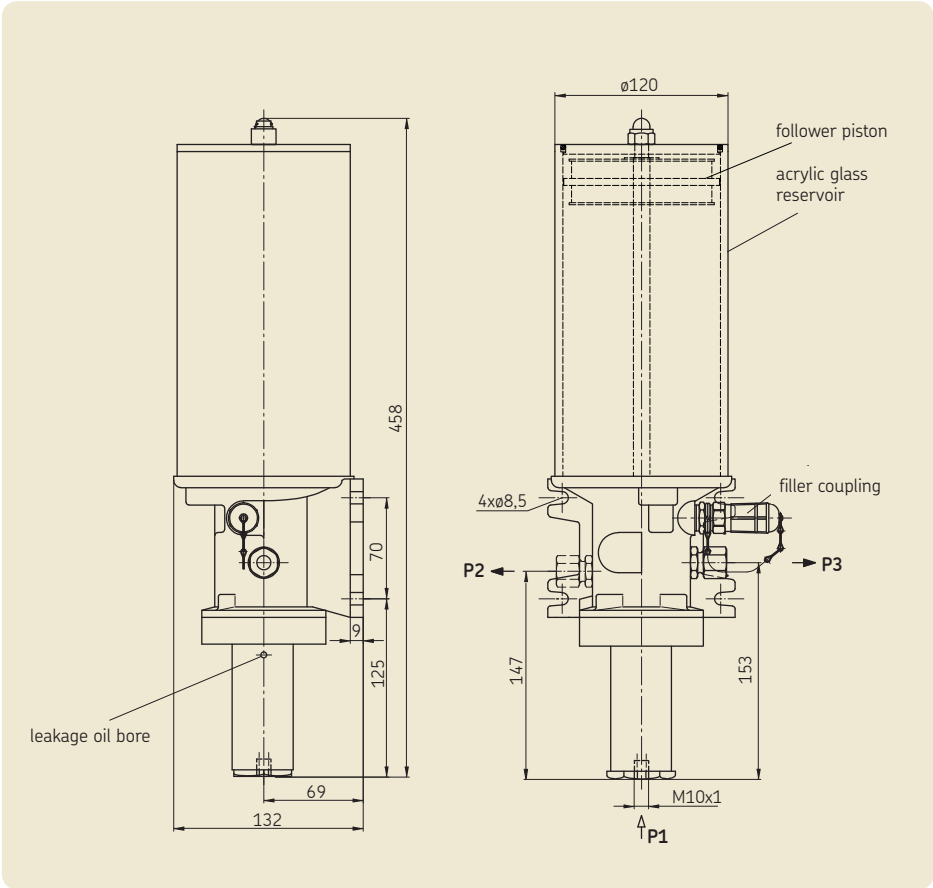
Order No.	Number of outlet ports	Delivery rate [cm ³] per port/stroke	
		P2	P3
PFH-23-2	1	2.5 *	2.5 *
PFH-23-22	2	1.25 **	1.25 **

* Optional with P2 or P3
(one outlet port closed by plug)

** Both outlet ports have to be used.

Use connection fittings with cutting-sleeve screw unions to DIN 2353.

Technical data	
Reservoir capacity	1.5 kg
Reservoir material	acrylic glass
Operating pressure as a function of P1	max. 200 bars
Operating pressure P1	6 to 30 bars
Actuating piston with resetting spring	
Area ratio: force/lubrication	7:1
Lubricant	grease up to NLGI grade 2
Temperature range	+10 to +60 °C
Mounting position	vertical



- P1 = pressurized oil or compressed-air port
P2, P3 = main line to system (ø 10 tubing)
T = return to tank
- Grease topped up via filler coupling
Order No. for coupling socket: 995-001-500
Order No. for grease topping-up pump: 169-000-004

PFP-23-2, PFP-23-22 with follower piston at atmospheric pressure
pneumatically actuated

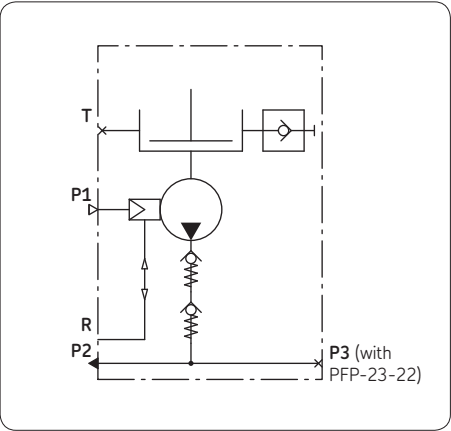
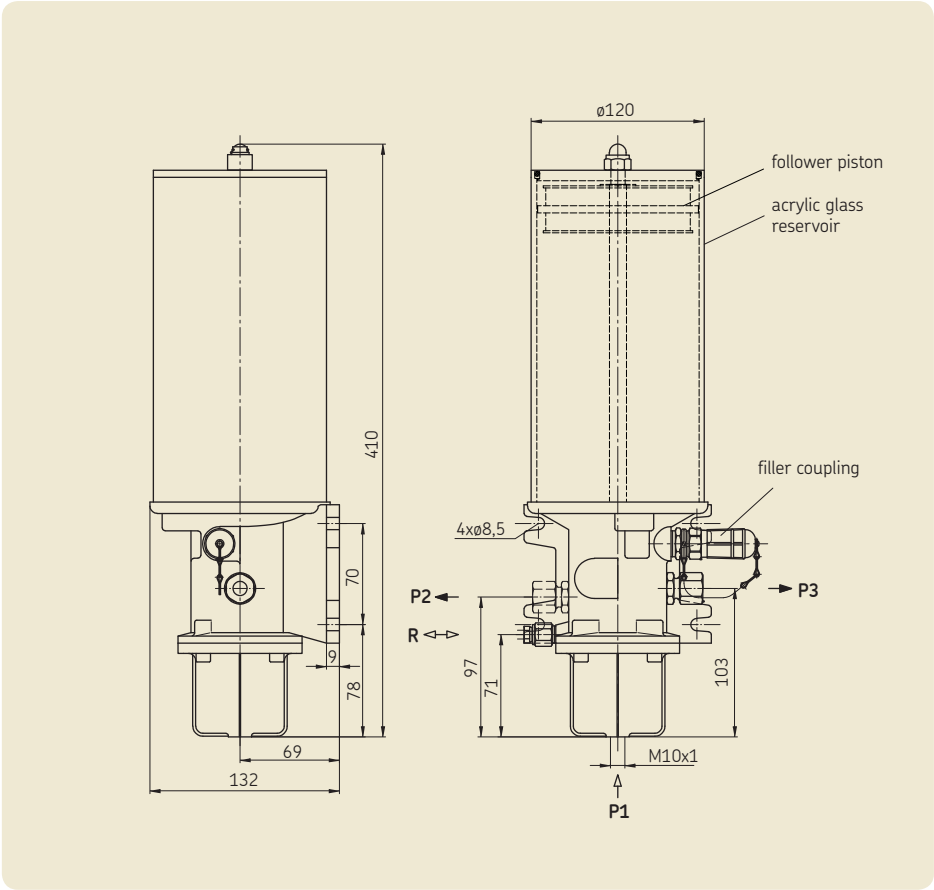
Order No.	Number of outlet ports	Delivery rate [cm³]	
		P2	P3
PFP-23-2	1	2.5 *	2.5 *
PFP-23-22	2	1.25 **	1.25 **

* Optional with P2 or P3
(one outlet port closed by plug)

** Both outlet ports have to be used.

Use connection fittings with cutting-sleeve screw unions to DIN 2353.

Technical data	
Reservoir capacity	1.5 kg
Reservoir material	acrylic glass
Operating pressure as a function of the air pressure	max. 190 bars
Actuating pressure for pump	6 to 10 bars
Actuating piston with resetting spring	
Area ratio: force/lubrication	20:1
Lubricant	grease up to NLGI grade 2
Temperature range	+10 to +60 °C
Mounting position	vertical



- P1** = pressurized oil or compressed-air port
P2, P3 = main line to system (ø 10 tubing)
R = air compensation line
T = return to tank
- Grease topped up via filler coupling
Order No. for coupling socket: **995-001-500**
Order No. for grease topping-up pump: **169-000-004**