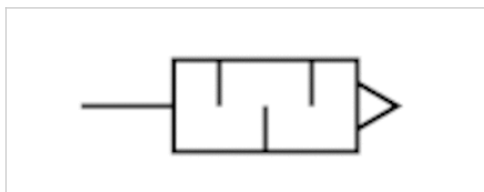


# Silencers, series SI1

- Ø 4 Ø 6 Ø 8 Ø 10 Ø 12

- Polyethylene



Working pressure min./max.

0 ... 10 bar

Ambient temperature min./max.

-25 ... 80 °C

Medium

Compressed air

Sound pressure level

See table below

Weight

See table below

Comment

Flow characteristic curves can be found under "Diagrams".

## Technical data

Part No.	Compressed air connection	Sound pressure level	Flow	Delivery unit	Weight	
			Qn			
R412007519	Ø 4	-	321 l/min	5 piece	0,002 kg	1)
R412007899	Ø 6	82 dB	680 l/min	5 piece	0,002 kg	1)
R412000591	Ø 6	80 dB	622 l/min	5 piece	0,002 kg	1)
R412007520	Ø 8	90 dB	1366 l/min	5 piece	0,002 kg	1)
R412000593	Ø 10	95 dB	2854 l/min	5 piece	0,004 kg	1)
R412007715	Ø 12	97 dB	3870 l/min	5 piece	0,007 kg	2)

Weight per piece

1) Nominal flow Qn at p1 = 6 bar (absolute) freely discharged. Sound pressure level measured at 6 bar against atmosphere at 1 m distance.

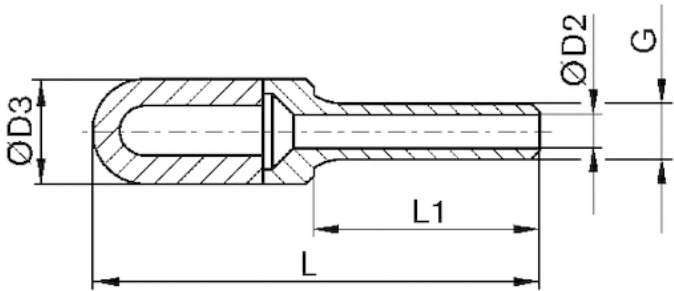
2) Nominal flow Qn at p1 = 5 bar (absolute) freely discharged. Sound pressure level measured at 5 bar against atmosphere at 1 m distance.

## Technical information

Material	
Silencer	Polyethylene
Thread	Polyethylene

Dimensions

Dimensions

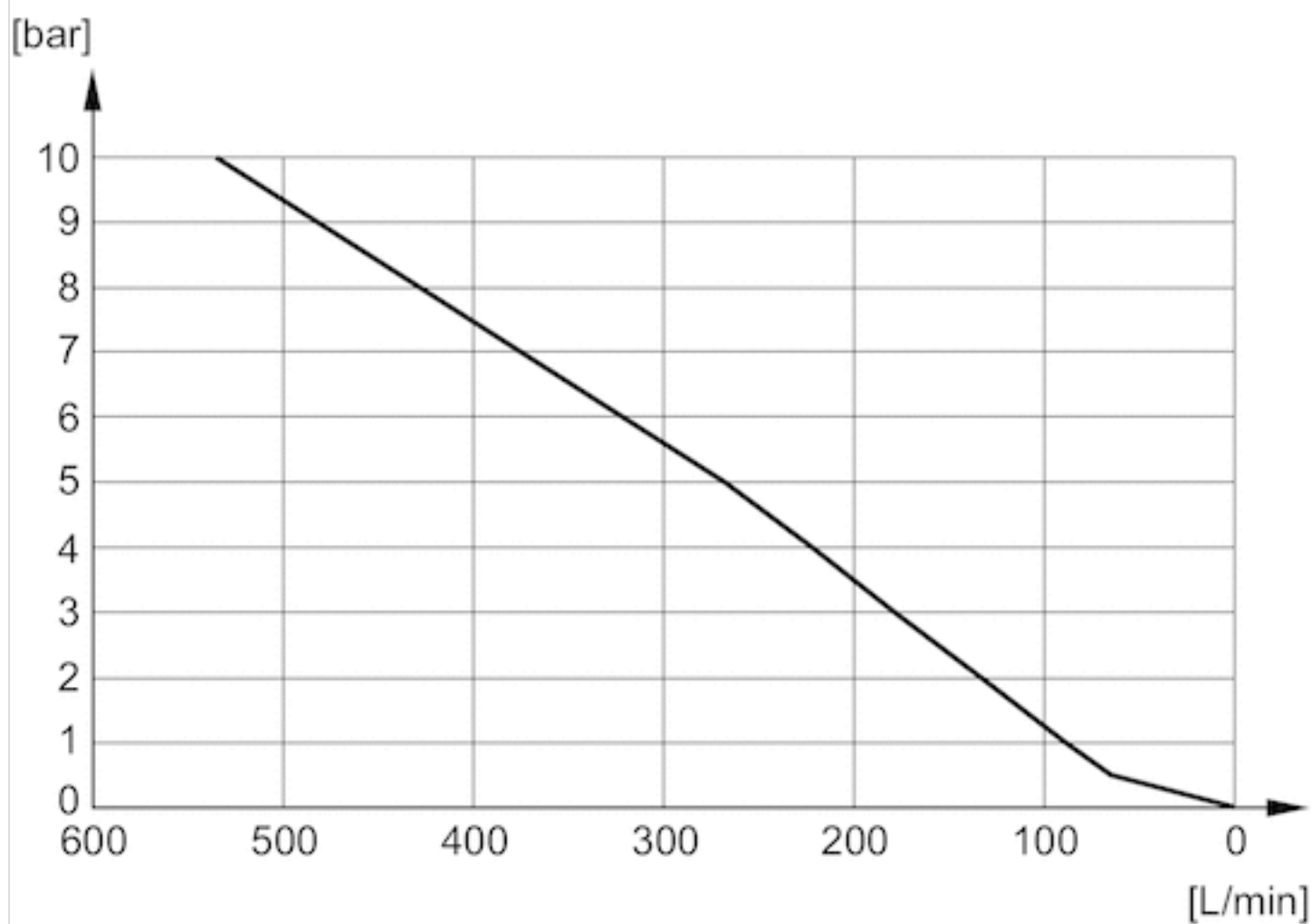


Dimensions

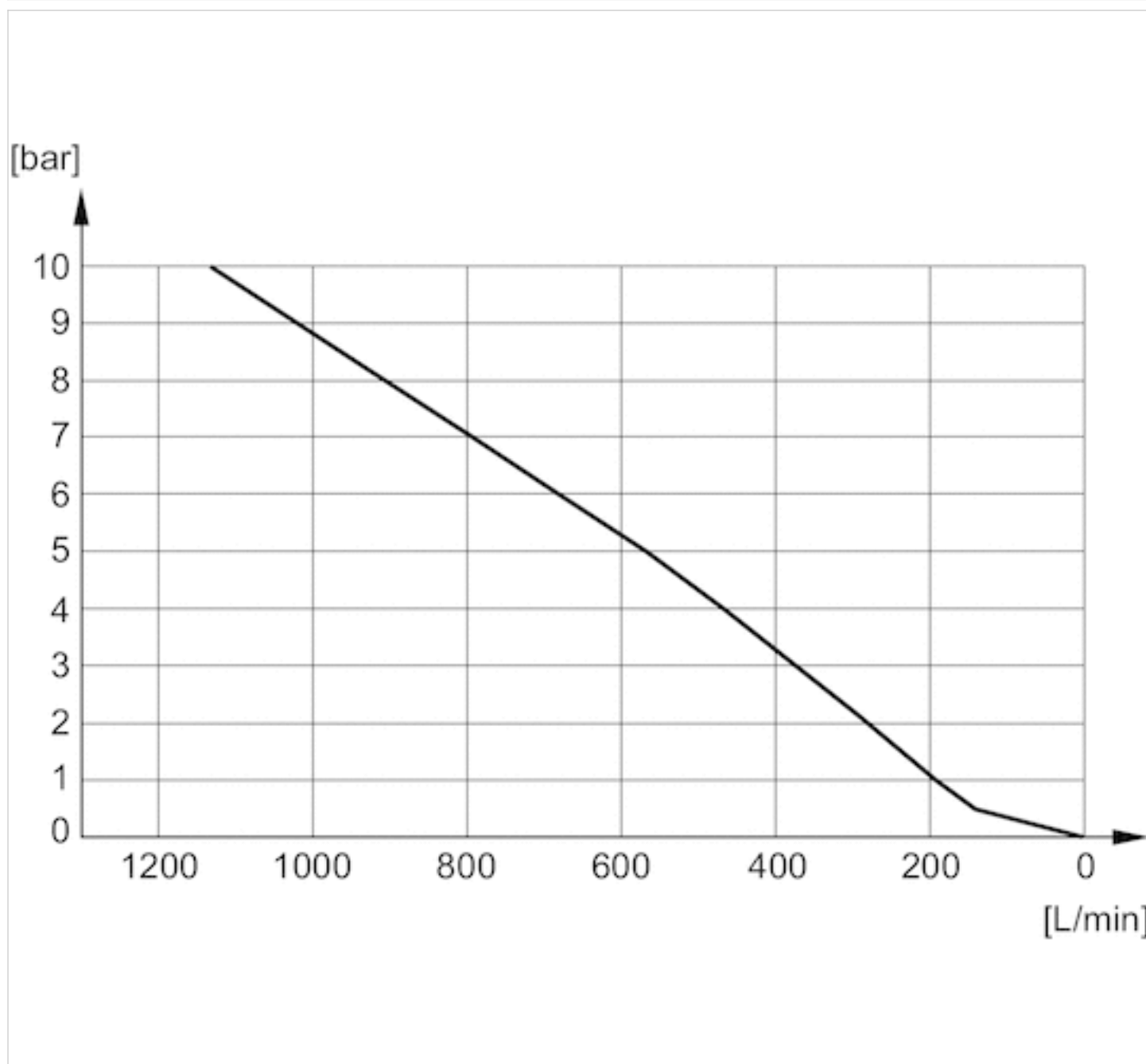
Part No.	Port G	$\varnothing D2$	$\varnothing D3$	L1	L
R412007519	$\varnothing 4$	2.5	7	16	32
R412007899	$\varnothing 6$	3.5	10	20.5	45
R412000591	$\varnothing 6$	3.5	12.5	20.5	45
R412007520	$\varnothing 8$	4.8	13.5	21.5	43.5
R412000593	$\varnothing 10$	6.9	15.5	26.5	57.5
R412007715	$\varnothing 12$	8.4	18.5	29	82

## Diagrams

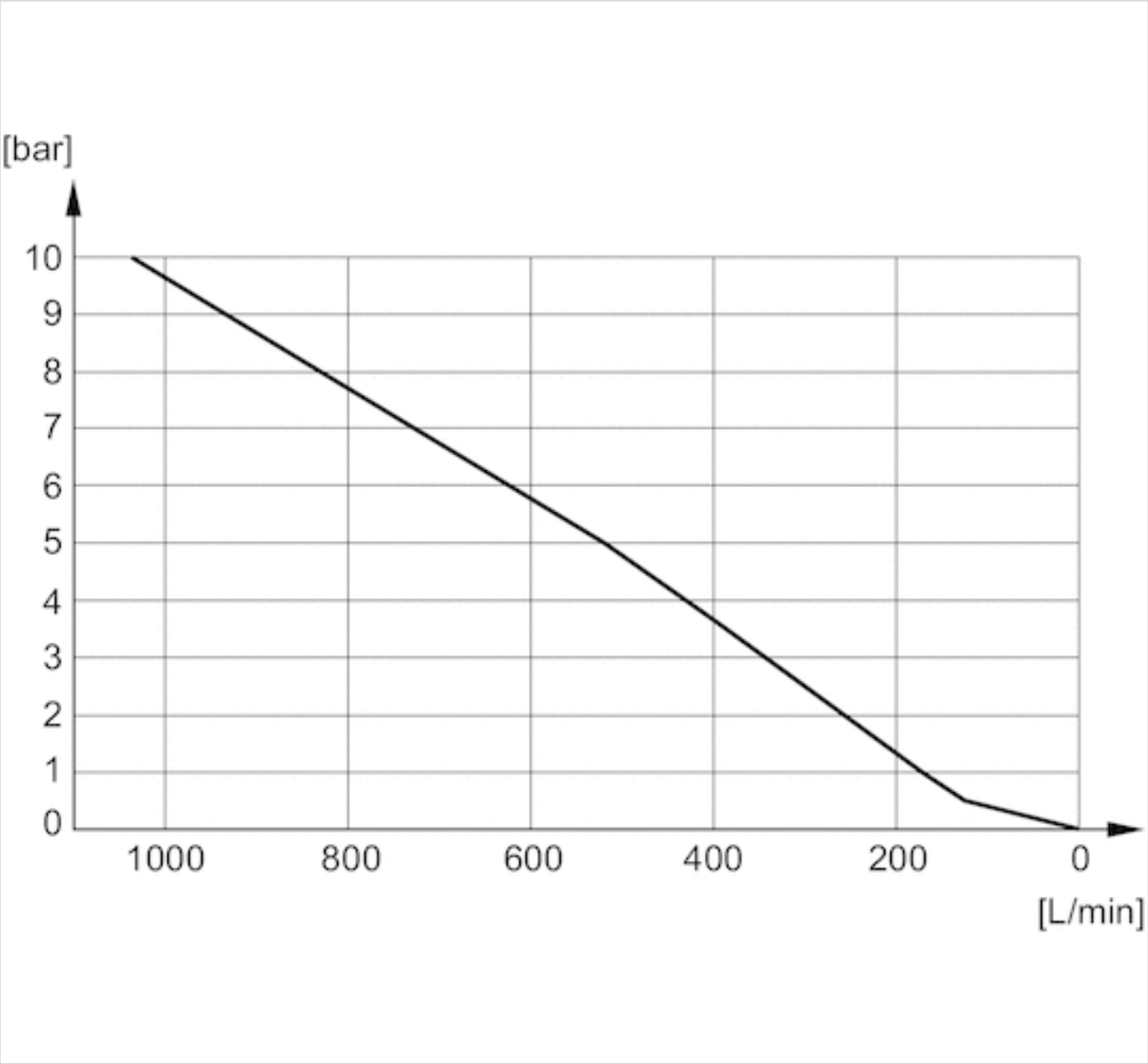
### Flow diagram, R412007519



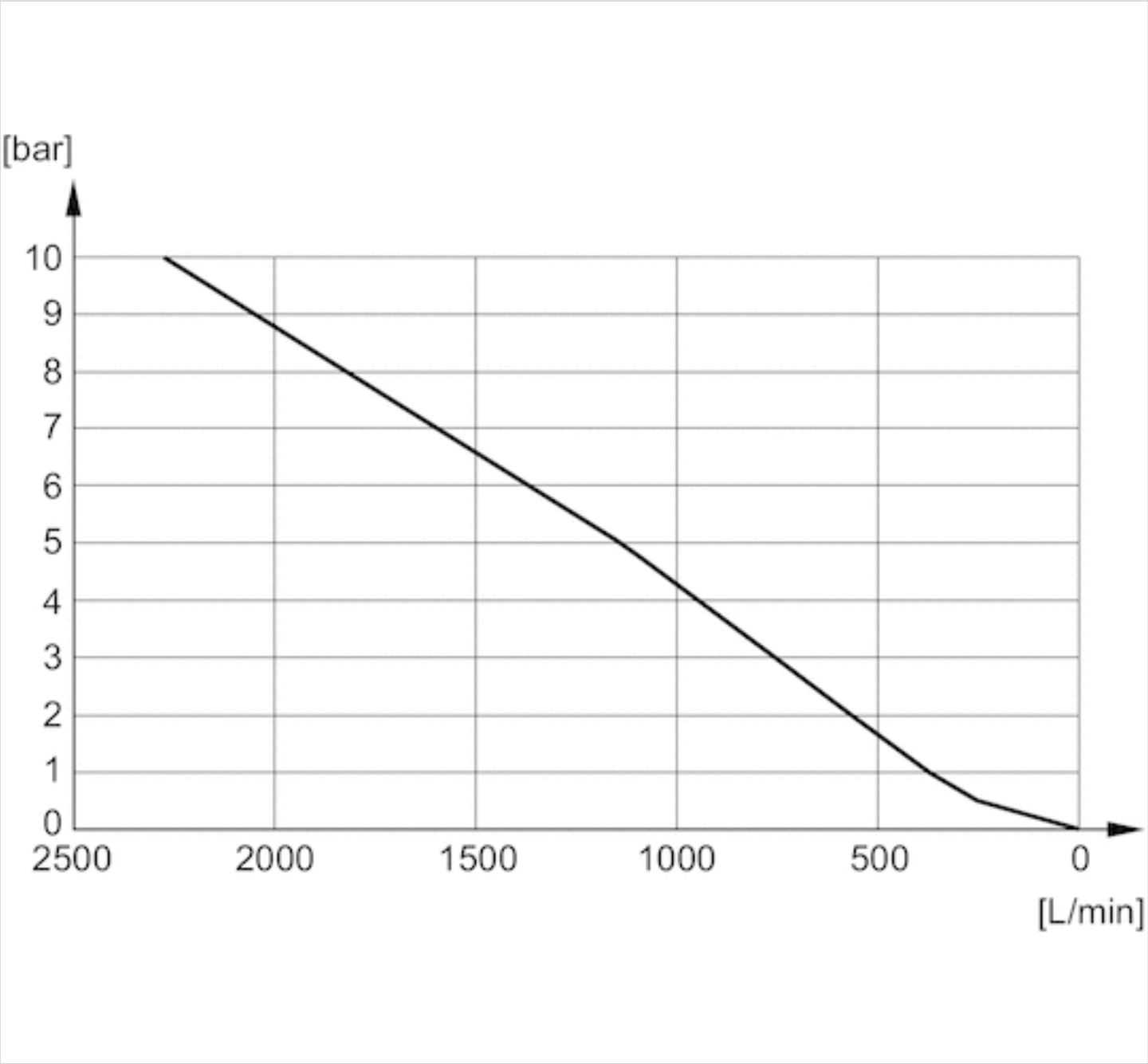
## Flow diagram, R412007899



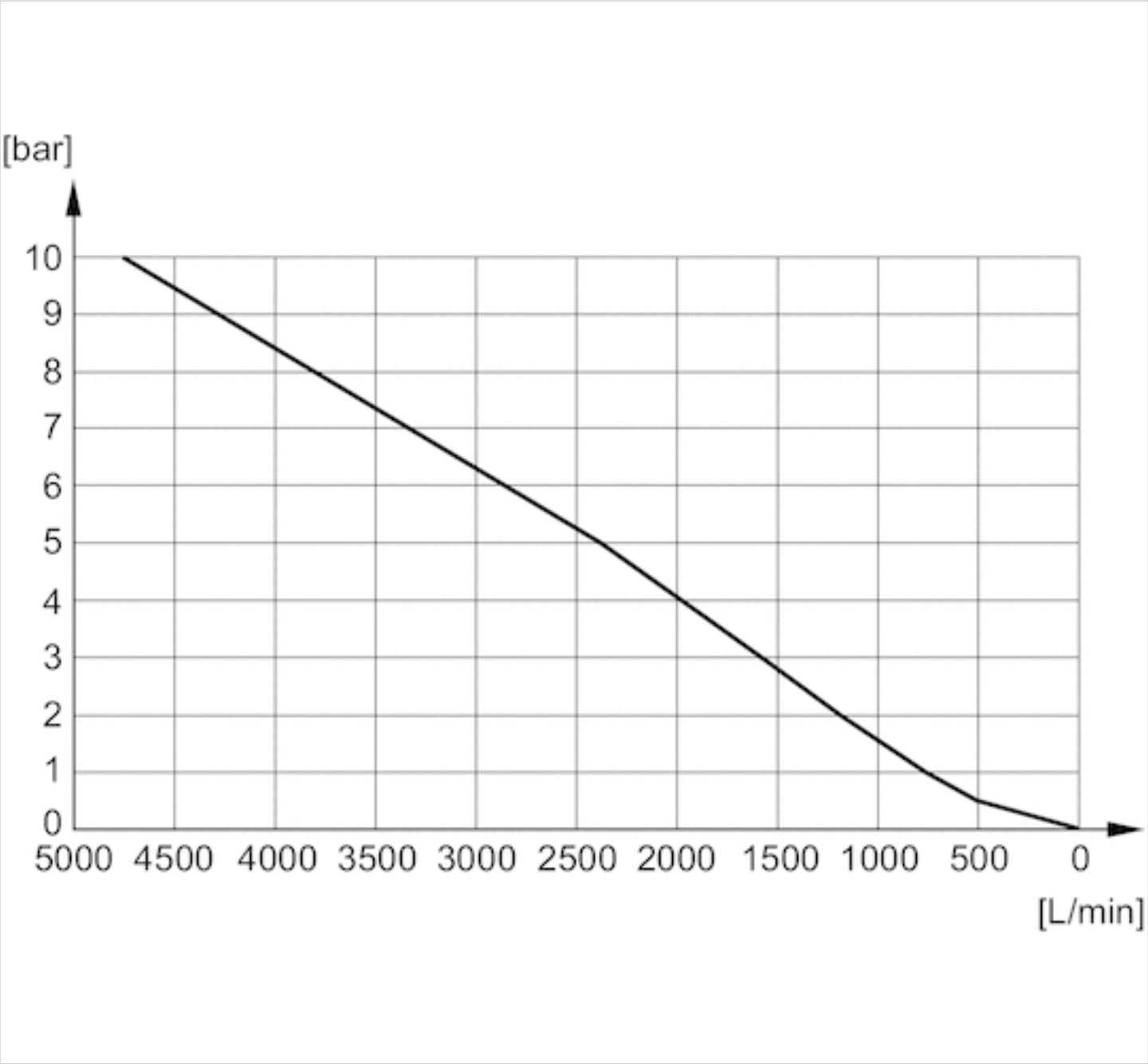
Flow diagram, R412000591



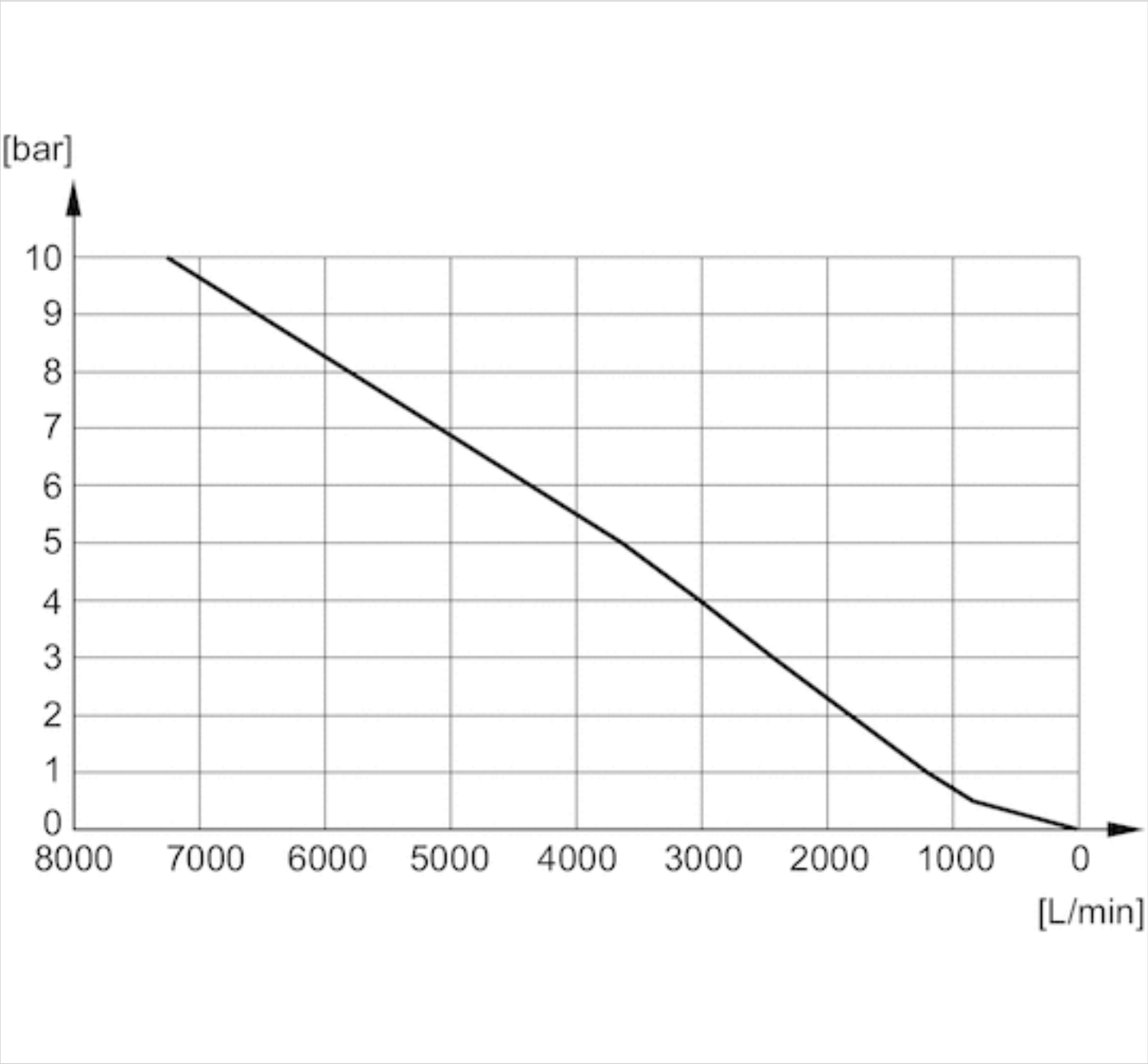
Flow diagram, R412007520



Flow diagram, R412000593

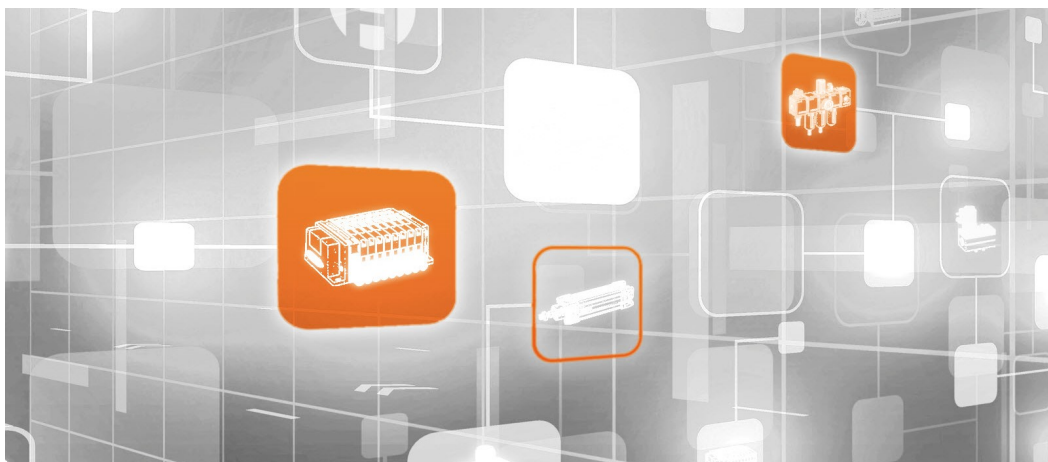


Flow diagram, R412007715





# Efficient pneumatic solutions, our program: cylinders and drives, valves and valve systems, air supply management



Visit us: [Emerson.com/Aventics](https://emerson.com/aventics)

Your local contact: [Emerson.com/contactus](https://emerson.com/contactus)



Emerson.com



Facebook.com/EmersonAutomationSolutions



LinkedIn.com/company/Emerson-Automation-Solutions



Twitter.com/EMR\_Automation

An example configuration is depicted on the title page. The delivered product may thus vary from that in the illustration. Subject to change. This Document, as well as the data, specifications and other information set forth in it, are the exclusive property of AVENTICS GmbH. It may not be reproduced or given to third parties without its consent. Only use the AVENTICS products shown in industrial applications. Read the product documentation completely and carefully before using the product. Observe the applicable regulations and laws of the respective country. When integrating the product into applications, note the system manufacturer's specifications for safe use of the product. The data specified only serve to describe the product. No statements concerning a certain condition or suitability for a certain application can be derived from our information. The information given does not release the user from the obligation of own judgement and verification. It must be remembered that the products are subject to a natural process of wear and aging.

The Emerson logo is a trademark and service mark of Emerson Electric Co. Brand logotype are registered trademarks of one of the Emerson family of companies. All other marks are the property of their respective owners. © 2020 Emerson Electric Co. All rights reserved.  
2020-12



## CONSIDER IT SOLVED™