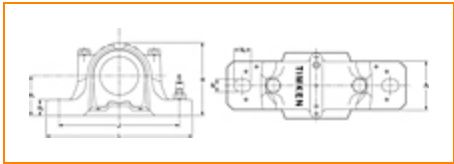




The Timken Company
 4500 Mt Pleasant St. NW
 N. Canton, OH 44720
Phone: (234) 262-3000
E-Mail: CustomerCAD@timken.com • **Web site:** www.timken.com

Housing – Bearing – Seal SNT 528 - 22228K - TSNG528, SNT/FSNT Taper Bore Plummer Block Mounted Bearings



[Types of Components](#) | [Housing](#) | [Bearing](#) | [Dimensions](#) | [Specifications](#)

Types of Components	
Housing	SNT 528
Bearing	22228K
Locating Rings (width x OD)	SR250X15
Seal Type	Double Lip
Seal	TSNG528
Adapter Sleeve ¹	H3128
Locknut	KM28
Lockwasher	MB28
End Cover ²	EC528



Housing

Material	Cast Iron
Housing Mass	39 Kg
Bolt Qty	2

Bearing

Cage Type	EJ
C1 Dynamic Load Rating	863000
C0 Static Load Rating	1060000
Max Oil Speed	2600
Max Grease Speed	2200

Dimensions

Shaft Diameter d	125 mm
A	205 mm
A1	150 mm
G	M30
H	302 mm
H1	150 mm
H2	50 mm
J	420 mm
Jmax	427 mm
Jmin	413 mm

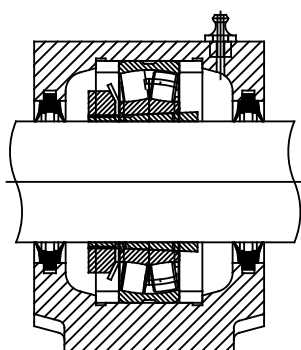
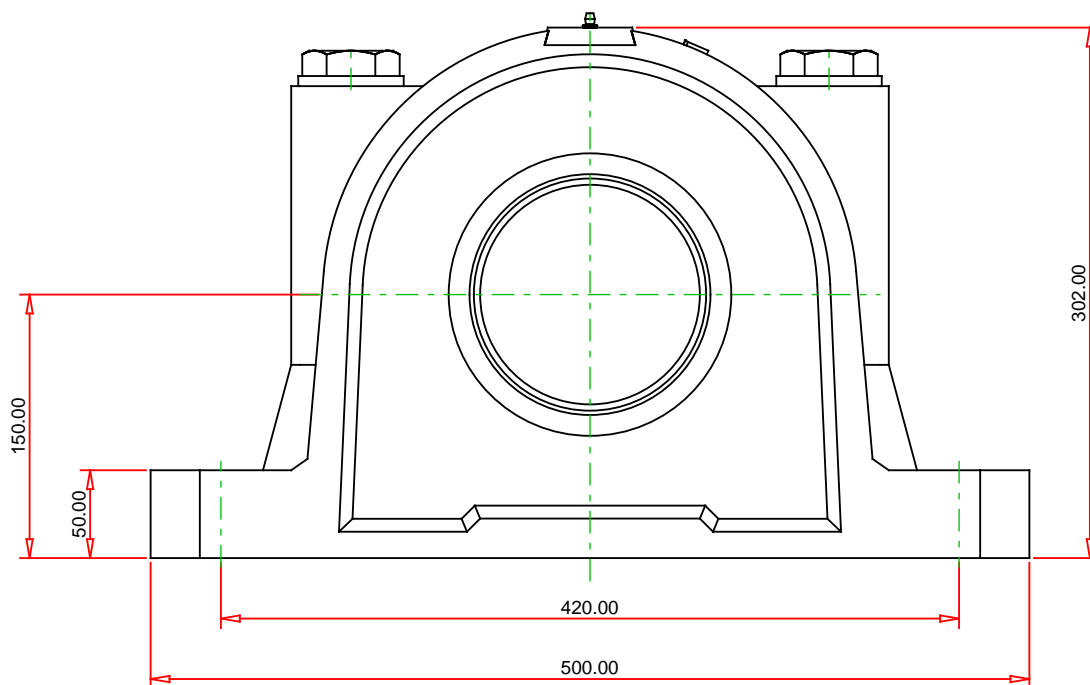
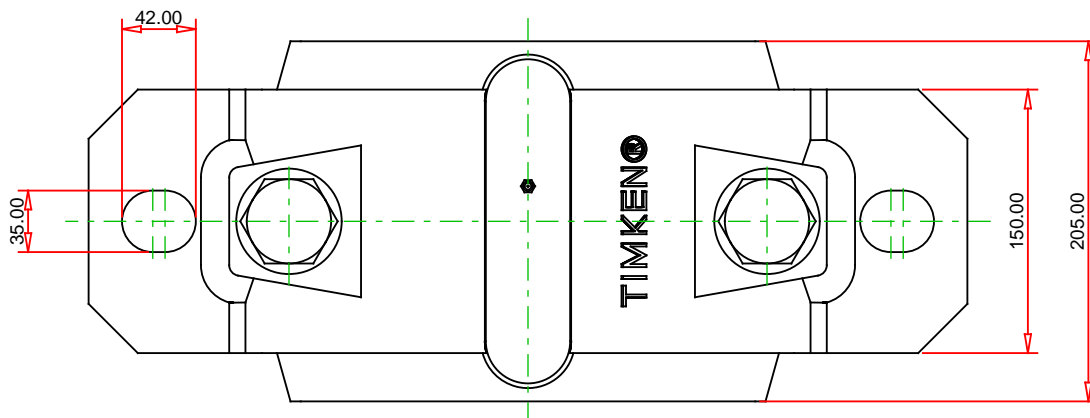
L	500 mm
N	35 mm
N1	42 mm

Specifications

UPC Code	999999999
Alternate Part Name	SNT528 - 22228K - TSNG528

¹ Purchase the Adapter Sleeve separately

² Two seals are required for a thru shaft application. One end cover can be used if application is not a thru shaft design. In this case, only one seal is required.



Note: Section View not to Scale

METRIC UNITS

Housing
Bearing
Seal (Quantity 2)
Seal Type
Locating Ring (Quantity 2)
Adapter Sleeve
(includes 1 sleeve, 1 locknut
and 1 lockwasher)

SNT 528
22228K
TSNG528
Double Lip
SR250X15
H3128

TIMKEN®

THE TIMKEN COMPANY
NORTH CANTON, OHIO USA

SNT 528 - 22228K - TSNG528
SNT/FSNT Taper Bore Plummer Block Mounted
Bearings

C1 Dynamic Load Rating (2 rows)	863000 N
C0 Static Load Rating	1060000 N
Max Oil Speed	2600 RPM
Max Grease Speed	2200 RPM
Material	Cast Iron

Every reasonable effort has been made to ensure the accuracy of the information contained in this writing, but no liability is accepted for errors, omissions or for any other reason.

FOR DISCUSSION ONLY