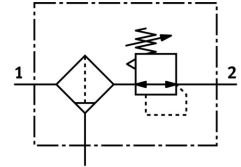



Filter regulator PCRP-64-G14-12-E-R1-M-T18

Part number: 4787806

FESTO



 [General operating condition](#)

Data sheet

Feature	Value
Size	64
Series	P
Actuator lock	Adjusting screw with lock
Mounting position	Vertical +/-5°
Grade of filtration	40 µm
Condensate drain	Manually rotating
Design	Filter regulator without pressure gauge
Conforms to standard	NACE MR0175/ISO 15156 (housing and bowl)
Max. condensate volume	30 ml
Controller function	Via primary pressure compensation With secondary venting
Symbol	00991586
Pressure gauge (ANALOG) or Pressure display (DIGITAL)	Prepared for G1/4
Operating pressure	0.1 MPa ... 2 MPa
Operating pressure	1 bar ... 20 bar
Pressure regulation range	0.5 bar ... 12 bar
Max. pressure hysteresis	0.2 bar
Max. standard flow rate	3990 l/min
Standard nominal flow rate	2845 l/min
Explosion protection	The information in the certificate must be observed! Zone 1 (ATEX) Zone 2 (ATEX) Zone 21 (ATEX) Zone 22 (ATEX)
Operating medium	Compressed air to ISO 8573-1:2010 [-:4:-] Inert gases
Note on operating and pilot medium	Lubricated operation possible (in which case lubricated operation will always be required)
LABS (PWIS) conformity	VDMA24364 zone III
Storage temperature	-20 °C ... 80 °C
Air purity class at output	Compressed air to ISO 8573-1:2010 [7:4:4]
Media temperature	-20 °C ... 80 °C
Ambient temperature	-20 °C ... 80 °C
Product weight	1965 g
Type of mounting	Either: In-line installation Via mounting kit

Feature	Value
Pressure gauge connection	G1/4
Pneumatic connection, port 1	G1/4
Pneumatic connection, port 2	G1/4
Material of drain screw	High-alloy stainless steel
Material number of drain screw	1.4404/316L
Material filter carrier	Stainless steel casting
Material number of filter support	1.4409/CF3M(316L)
Note on materials	RoHS-compliant
Material mounting bracket	High-alloy stainless steel
Material seals	CR NBR
Material spring	High-alloy stainless steel
Material filter	High-alloy stainless steel
Material number of filter	1.4404/316L
Material housing	Stainless steel casting
Material number housing	1.4409/CF3M(316L)
Material adjusting screw	High-alloy stainless steel
Material bowl	Stainless steel casting
Material number of bowl	1.4409/CF3M (316L)