



The Timken Company

4500 Mt Pleasant St. NW

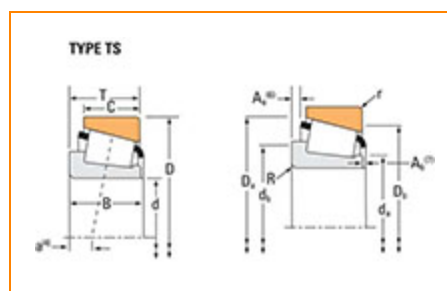
N. Canton, OH 44720

Phone: (234) 262-3000

E-Mail: CustomerCAD@timken.com • **Web site:** www.timken.com

Timken Part Number 14276, Tapered Roller Bearings - Single Cups - Imperial

This is the most basic and most widely used type of tapered roller bearing. It consists of two main separable parts: the cone (inner ring) assembly and the cup (outer ring). It is typically mounted in opposing pairs on a shaft.



[Specifications](#) | [Dimensions](#) | [Abutment and Fillet Dimensions](#) | [Factors](#)

Specifications

Series	14000
Cup Part Number	14276
Design Units	Imperial

Dimensions

D - Cup Outer Diameter	2.7170 in 69.012 mm
C - Cup Width	0.6250 in 15.875 mm

Abutment and Fillet Dimensions

r - Cup Backface "To Clear" Radius¹	0.050 in 1.27 mm
Da - Cup Frontface Backing Diameter	2.52 in 63.00 mm
Db - Cup Backface Backing Diameter	2.36 in 59.94 mm

Factors

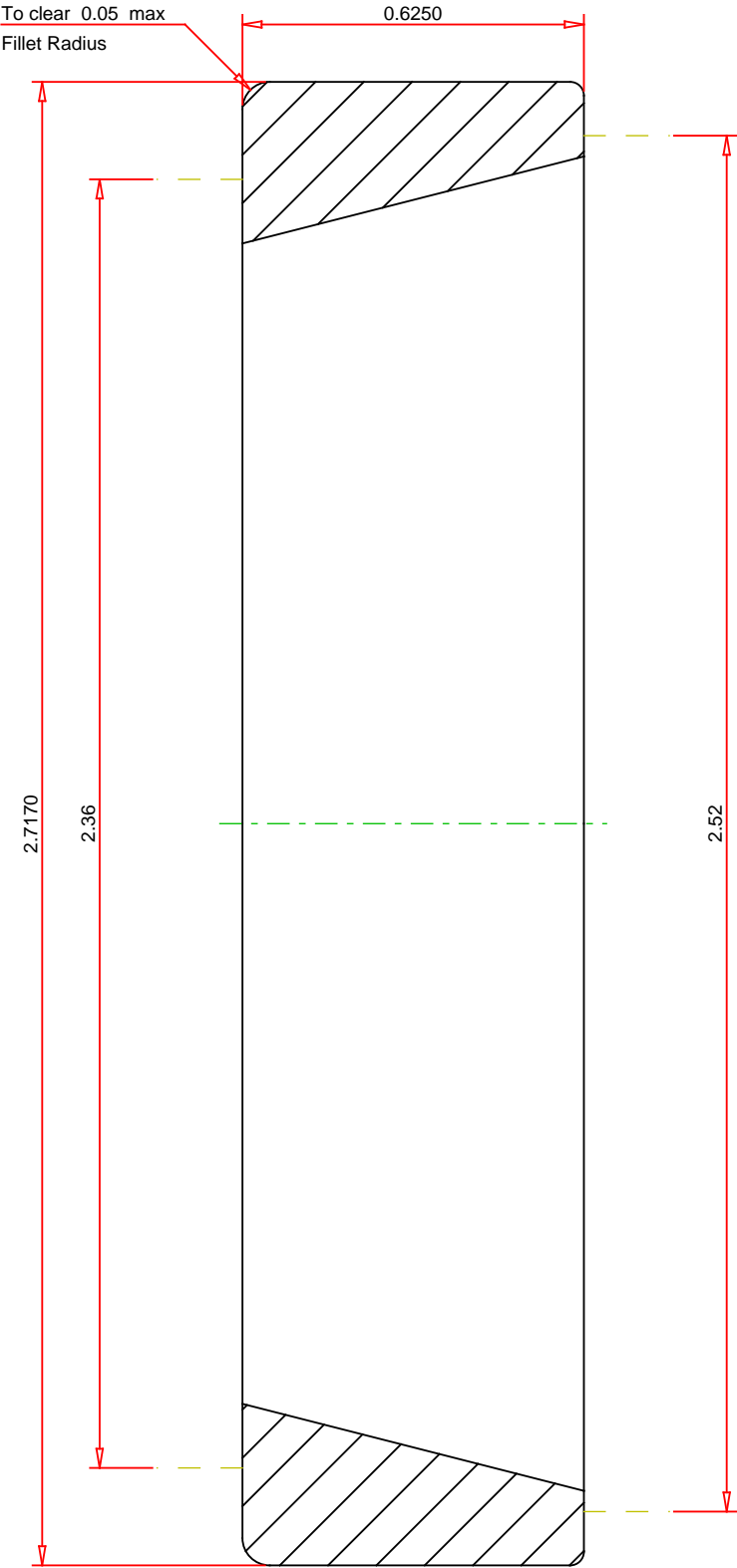
e - ISO Factor²	0.38
Y - ISO Factor³	1.57
Cg - Geometry Factor⁴	0.0668

¹ These maximum fillet radii will be cleared by the bearing corners.

² These factors apply for both inch and metric calculations. Consult your Timken representative for instruction on use.

³ These factors apply for both inch and metric calculations. Consult your Timken representative for instruction on use.

⁴ Geometry constant for Lubrication Life Adjustment Factor a3l.



IMPERIAL UNITS

TIMKEN®

THE TIMKEN COMPANY
NORTH CANTON, OHIO USA

14276
SINGLE TAPERED CUP