



The Timken Company

4500 Mt Pleasant St. NW

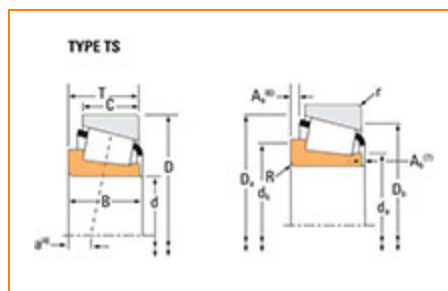
N. Canton, OH 44720

Phone: (234) 262-3000

E-Mail: CustomerCAD@timken.com • **Web site:** www.timken.com

Part Number 15120, Tapered Roller Bearings - Single Cones - Imperial

This is the most basic and most widely used type of tapered roller bearing. It consists of two main separable parts: the cone (inner ring) assembly and the cup (outer ring). It is typically mounted in opposing pairs on a shaft.



[Specifications](#) | [Dimensions](#) | [Abutment and Fillet Dimensions](#) | [Basic Load Ratings](#) | [Factors](#)

Specifications

Series	15000
Cone Part Number	15120
Design Units	Imperial
Cage Type	Stamped Steel
C1 - Dynamic Radial Rating (Two-Row, 1 million revolutions)¹	23400 lbf 104000 N
C90(2) - Dynamic Radial Rating (Two-Row, 90 million revolutions)²	6080 lbf 27000 N

Dimensions

d - Bore	1.1895 in 30.213 mm
B - Cone Width	0.8125 in 20.638 mm

Abutment and Fillet Dimensions

R - Cone Backface "To Clear" Radius³	0.03 in 0.800 mm
da - Cone Frontface Backing Diameter	1.4 in 35.5 mm
db - Cone Backface Backing Diameter	1.42 in 36 mm
Ab - Cage-Cone Frontface Clearance	0.07 in 1.8 mm
Aa - Cage-Cone Backface Clearance	0.03 in 0.8 mm
a - Effective Center Location⁴	-0.23 in -5.8 mm

Basic Load Ratings

C90 - Dynamic Radial Rating (90 million revolutions)⁵	3490 lbf 15500 N
C1 - Dynamic Radial Rating (1 million revolutions)⁶	13500 lbf 59900 N
C0 - Static Radial Rating	12100 lbf 53900 N
C_{a90} - Dynamic Thrust Rating (90 million revolutions)⁷	2090 lbf 9310 N

Factors

K - Factor⁸	1.67
G1 - Heat Generation Factor (Roller-Raceway)	14.6
G2 - Heat Generation Factor (Rib-Roller End)	10
Cg - Geometry Factor⁹	0.0606

¹ Based on 1×10^6 revolutions L_{10} life, for the ISO life calculation method.

² Based on 90×10^6 revolutions L_{10} life, for The Timken Company life calculation method. C_{90} and C_{a90} are radial and thrust values for a single-row, $C_{90(2)}$ is the two-row radial value.

³ These maximum fillet radii will be cleared by the bearing corners.

⁴ Negative value indicates effective center inside cone backface.

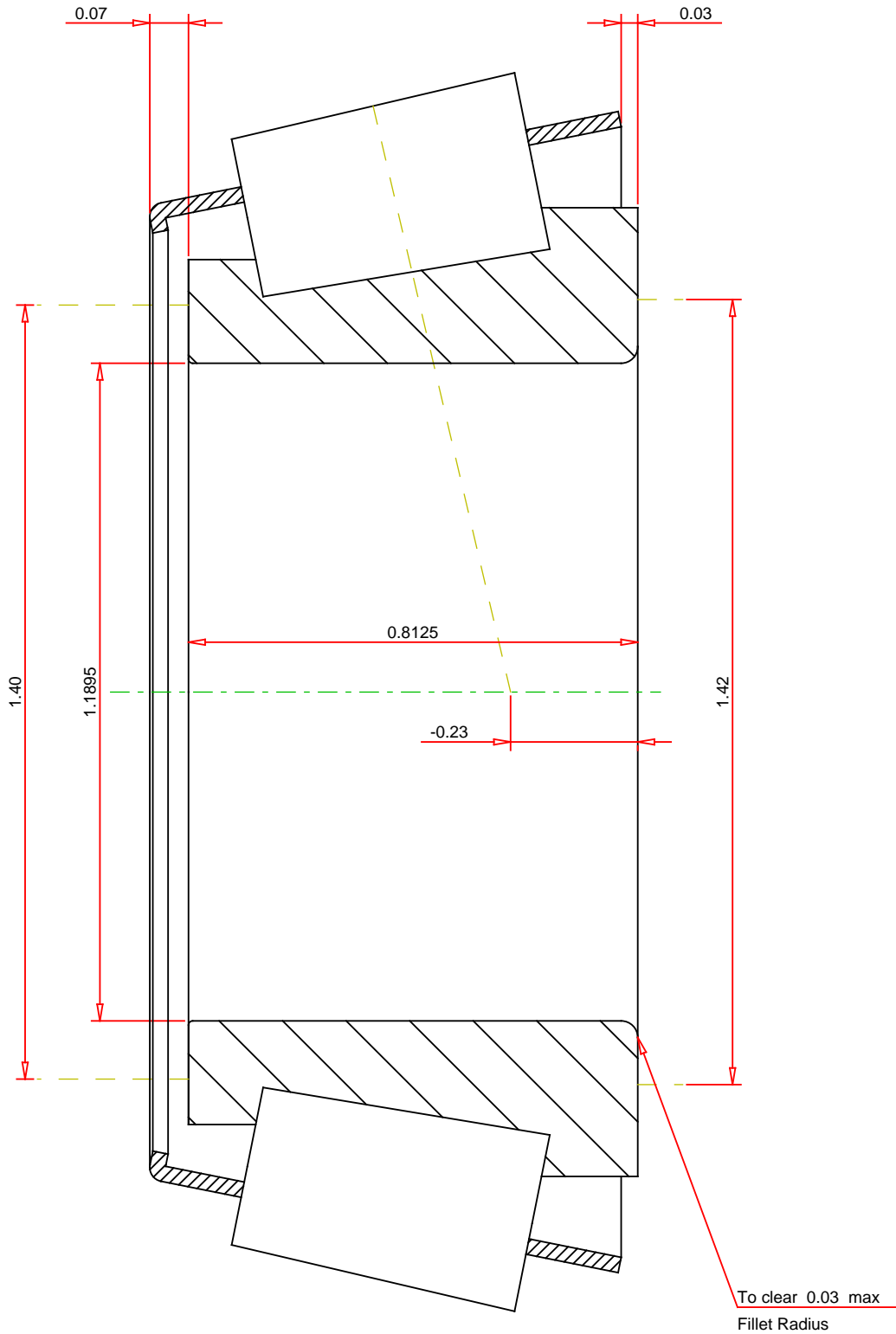
⁵ Based on 90×10^6 revolutions L_{10} life, for The Timken Company life calculation method. C_{90} and C_{a90} are radial and thrust values.

⁶ Based on 1×10^6 revolutions L_{10} life, for the ISO life calculation method.

⁷ Based on 90×10^6 revolutions L_{10} life, for The Timken Company life calculation method. C_{90} and C_{a90} are radial and thrust values for a single-row, $C_{90(2)}$ is the two-row radial value.

⁸ These factors apply for both inch and metric calculations. Consult your Timken representative for instruction on use.

⁹ Geometry constant for Lubrication Life Adjustment Factor a_3 .



IMPERIAL UNITS

<div>Number of Rollers Per Row15</div>	<div>TIMIKEN®</div> <div>THE TIMKEN COMPANY</div> <div>NORTH CANTON, OHIO USA</div>	<div>15120</div> <div>SINGLE TAPERED CONE</div> <div><div><div>K Factor</div><div>Dynamic Radial Rating - C90</div><div>Dynamic Thrust Rating - Ca90</div><div>Dynamic Radial Rating - C1</div></div><div><div>1.67</div><div>3490 lbf</div><div>2090 lbf</div><div>13500 lbf</div></div></div>
<div>Every reasonable effort has been made to ensure the accuracy of the information contained in this writing, but no liability is accepted for errors, omissions or for any other reason.</div>		<div>FOR DISCUSSION ONLY</div>