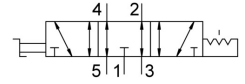


Selector valve VHEF-ES-B53E-G18

Part number: 4106820

FESTO



Data sheet

Feature	Value
Valve function	5/3, exhausted
Lap	Overlap
Cover material	PA-reinforced
Max. force on actuator	200 N
Max. transverse load on actuator	200 N
Actuation type	Manual
Width	20 mm
Standard nominal flow rate	530 l/min
Pneumatic working port	G1/8
Operating pressure	-0.95 bar ... 10 bar
Design	Piston gate valve
Nominal width	5.2 mm
Type code	VHEF
Exhaust air function	With flow control option
Application note	Operate by hand only
Sealing principle	Soft
Mounting position	Any
Manual override	Detenting
Type of control	Direct
Flow direction	Reversible
Symbol	00995889
Max. switching frequency	0.5 Hz
Explosion prevention and protection	Zone 2 (ATEX) Zone 22 (ATEX) Zone 1 (ATEX) Zone 21 (ATEX)
Operating medium	Compressed air as per ISO 8573-1:2010 [7:-:-]
Information on operating and pilot media	Operation with oil lubrication possible (required for further use)
Corrosion resistance class (CRC)	1 - Low corrosion stress
Temperature of medium	-10 °C ... 60 °C
Ambient temperature	-10 °C ... 60 °C
Actuating torque	0.3 Nm
Product weight	235 g
Type of mounting	With through-hole Front panel mounting Optionally:
Pneumatic connection 1	G1/8

Feature	Value
Pneumatic connection 2	G1/8
Pneumatic connection 3	G1/8
Pneumatic connection 4	G1/8
Pneumatic connection 5	G1/8
Note on materials	RoHS-compliant
Seals material	NBR
Housing material	Wrought aluminum alloy, anodized
Lever material	PA-reinforced