

Preparation of compressed air ► Maintenance units and components

3/2-directional valve, electrically operated, Series NL2-SOV

► ATEX optional ► G 1/4 ► pipe connection ► Electr. connection: Plug, ISO 6952, form B



00106022_2

Version	Poppet valve, Can be assembled into blocks
Nominal flow, 1►2	1100 l/min
Nominal flow, 2►3	450 l/min
Working pressure min./max.	Protected against polarity reversal
Medium	3 bar / 10 bar
Medium temperature min./max.	Compressed air
Ambient temperature min./max.	Neutral gases
Pilot	-10°C / +60°C
Sealing principle	-10°C / +60°C
Max. particle size	internal
Protection class, with Plug Mounted	Soft sealing
Duty cycle	5 µm
	IP65
	100 %
Materials:	
Housing	Die cast zinc
Front plate	Acrylonitrile butadiene styrene
Seals	Acrylonitrile butadiene styrene

Technical Remarks

- The pressure dew point must be at least 15 °C under ambient and medium temperature and may not exceed 3 °C.
- ATEX optional: The ATEX ID depends on the selected ATEX coil.

Operating voltage			Power consumption	Switch-on power	Holding power
DC	AC 50 Hz	AC 60 Hz	DC	AC 50 Hz	AC 50 Hz
			W	VA	VA
24 V	-	-	4.8	-	-
-	230 V	230 V	-	11.8	8.5

	MO	Compressed air connection			Operating voltage			Power consumption	Holding power	Part No.
		Input	Output	Exhaust	DC	AC 50 Hz	AC 60 Hz	DC	AC 50 Hz	
								[W]	[VA]	
	-	G 1/4	G 1/4	G 1/4	24 V	-	-	4.8	-	0821300922
					-	230 V	230 V	-	8.5	0821300923
	-	G 1/4	G 1/4	G 1/4	-	-	-	-	-	0821300924
					-	-	-	-	-	
		G 1/4	G 1/4	G 1/4	-	-	-	-	-	0821300929

3/2-directional valve, electrically operated, Series NL2-SOV

► ATEX optional ► G 1/4 ► pipe connection ► Electr. connection: Plug, ISO 6952, form B

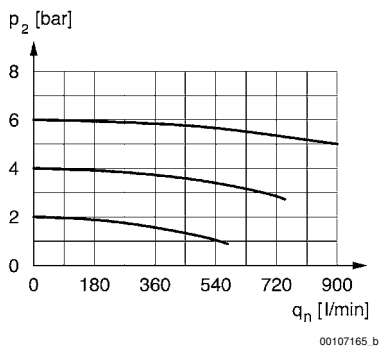
Part No.	Switch-on power	Weight	Note
	AC 50 Hz		
	[VA]	[kg]	
0821300922	-	0.45	2)
0821300923	11.8		
0821300924	-	0.49	1)
0821300929	-	0.45	1)

1) pilot valve without coil

2) Connector standard: ISO 6952

Nominal flow Q_n with secondary pressure $p_2 = 6$ bar at $\Delta p = 0,1$ bar

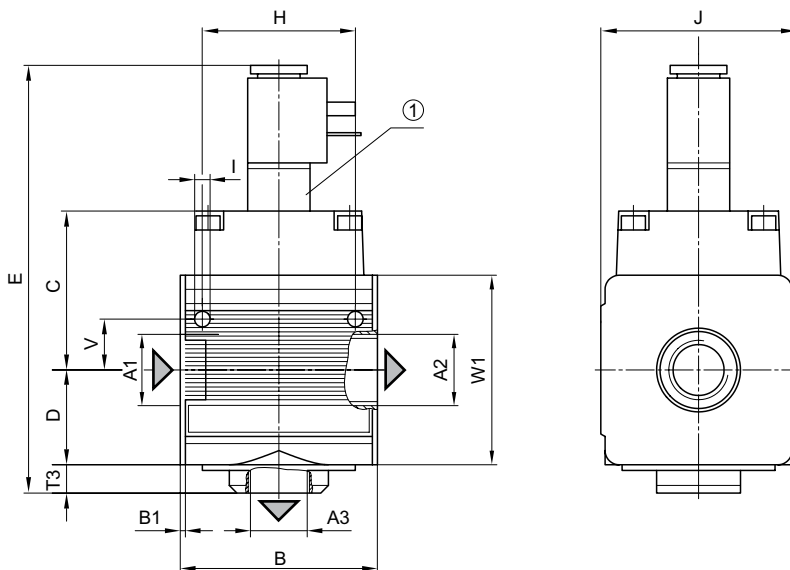
Flow rate characteristic



p_2 = secondary pressure

q_n = nominal flow

Dimensions



00107294_b

1) electrically operated

Preparation of compressed air ► Maintenance units and components

3/2-directional valve, electrically operated, Series NL2-SOV

► ATEX optional ► G 1/4 ► pipe connection ► Electr. connection: Plug, ISO 6952, form B

A1	A2	A3	B	B1	C	D	E	H	I	J	T3	V	W1
G 1/4	G 1/4	G 1/4	48	1.5	44	26	131	36	4.4	47	10	12.3	52
