



The Timken Company

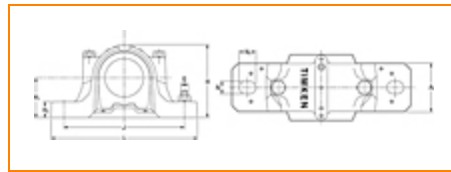
4500 Mt Pleasant St. NW

N. Canton, OH 44720

Phone: (234) 262-3000

E-Mail: CustomerCAD@timken.com • **Web site:** www.timken.com

Housing – Bearing – Seal SNT 530 - 22230 - TSNG230, SNT Cylindrical Bore Plummer Block Housed Units



[Types of Components](#) | [Housing](#) | [Bearing](#) | [Dimensions](#) | [Specifications](#)

Types of Components

Housing	SNT 530
Bearing	22230
Locating Rings (width x OD)	SR270X16.5
Seal Type	Double Lip
Seal	TSNG230
End Cover ¹	EC530

Housing

Material	Cast Iron
Bolt Qty	2
Housing Mass	48 Kg

Bearing



Cage Type	EJ
C1 Dynamic Load Rating	1000
C0 Static Load Rating	1230
Max Oil Speed	2400
Max Grease Speed	2000

Dimensions

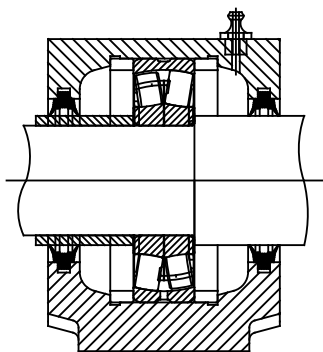
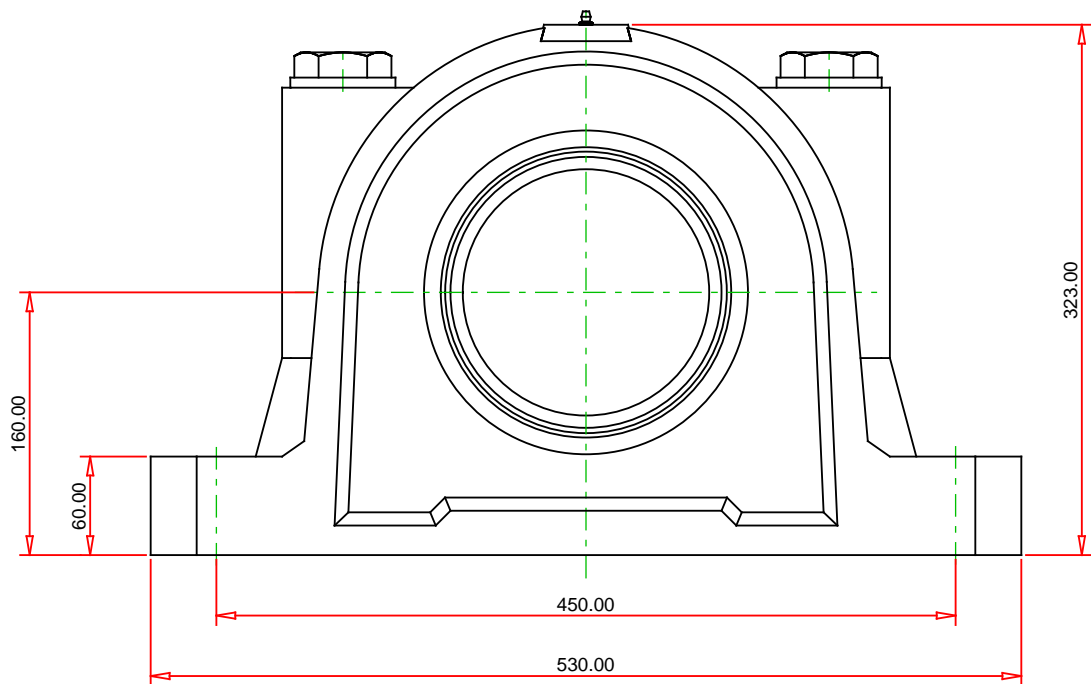
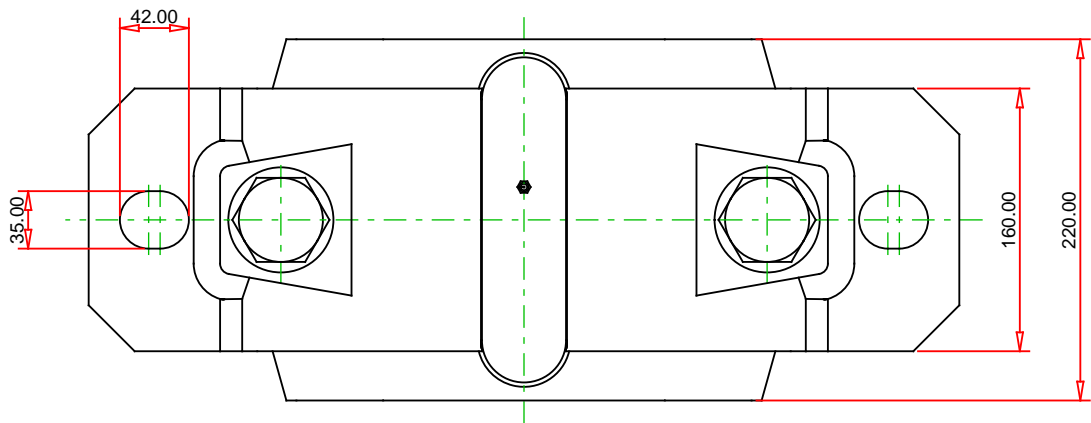


Shaft Diameter da	150 mm
Shaft Diameter db	165 mm
A	220.00 mm
A1	160 mm
G	M30
H	323 mm
H1	160 mm
H2	60.00 mm
Jmax	457 mm
Jmin	443 mm
J	450 mm
L	530 mm
N1	42 mm
N	35 mm

Specifications

UPC Code	9999999999
Alternate Part Name	SNT530 - 22230 - TSNG230

¹ Two seals are required for a thru shaft application. One end cover can be used if application is not a thru shaft design. In this case, only one seal is required.



Note: Section View not to Scale

METRIC UNITS

Housing	SNT 530
Bearing	22230
Seal (Quantity 2)	TSNG230
Seal Type	Double Lip
Locating Ring (Quantity 2)	SR270X16.5

TIMKEN®

THE TIMKEN COMPANY
NORTH CANTON, OHIO USA

SNT 530 - 22230 - TSNG230 SNT Cylindrical Bore Plummer Block Housed Units

C1 Dynamic Load Rating (2 rows)	1000 kN
C0 Static Load Rating	1230 kN
Max Oil Speed	2400 RPM
Max Grease Speed	2000 RPM
Material	Cast Iron

Every reasonable effort has been made to ensure the accuracy of the information contained in this writing, but no liability is accepted for errors, omissions or for any other reason.

FOR DISCUSSION ONLY