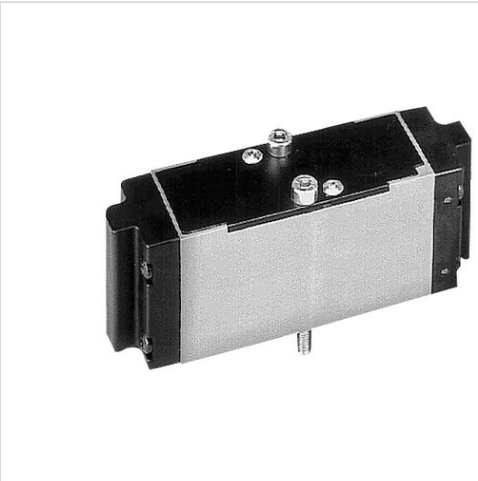





5/3-directional valve, CD01-PA

- ISO 15407-1, 26 mm
- Qn = 650 l/min
- Plate connection
- Compressed air connection output base plate DIN ISO 15407-1
- suitable for ATEX



Type	Spool valve, positive overlapping
Sealing principle	Soft sealing
ATEX class G	3G
Certificates	Free of substances that impair surface wetting in the coating process
Connection type	Plate connection
Standards	ISO 15407-1, 26 mm
Compressed air connection	base plate DIN ISO 15407-1
Working pressure min./max.	-0,95 ... 16 bar
Control pressure min./max.	3 ... 16 bar
Ambient temperature min./max.	-15 ... 50 °C
Medium temperature min./max.	-15 ... 50 °C
Medium	Compressed air class 3-3-2
Max. particle size	50 µm
Oil content of compressed air	0 ... 5 mg/m³
Mounting screw	M4 with hexagon socket
Mounting screw tightening torque	2,5 Nm
Weight	0,16 kg

Technical data

Part No.			Flow	Flow	Flow	ATEX
			Qn	Qn 1►2	Qn 2►3	
5714003810		exhausted center	-	650 l/min	750 l/min	suitable for ATEX
5714003800		pressurized center	-	750 l/min	650 l/min	suitable for ATEX
5714003820		closed center	650 l/min	650 l/min	650 l/min	suitable for ATEX

Nominal flow Qn at 6 bar and Δp = 1 bar

Technical information

The min. control pressure must be adhered to, since otherwise faulty switching and valve failure may result!

The pressure dew point must be at least 15 °C under ambient and medium temperature and may not exceed 3 °C .

The oil content of compressed air must remain constant during the life cycle.

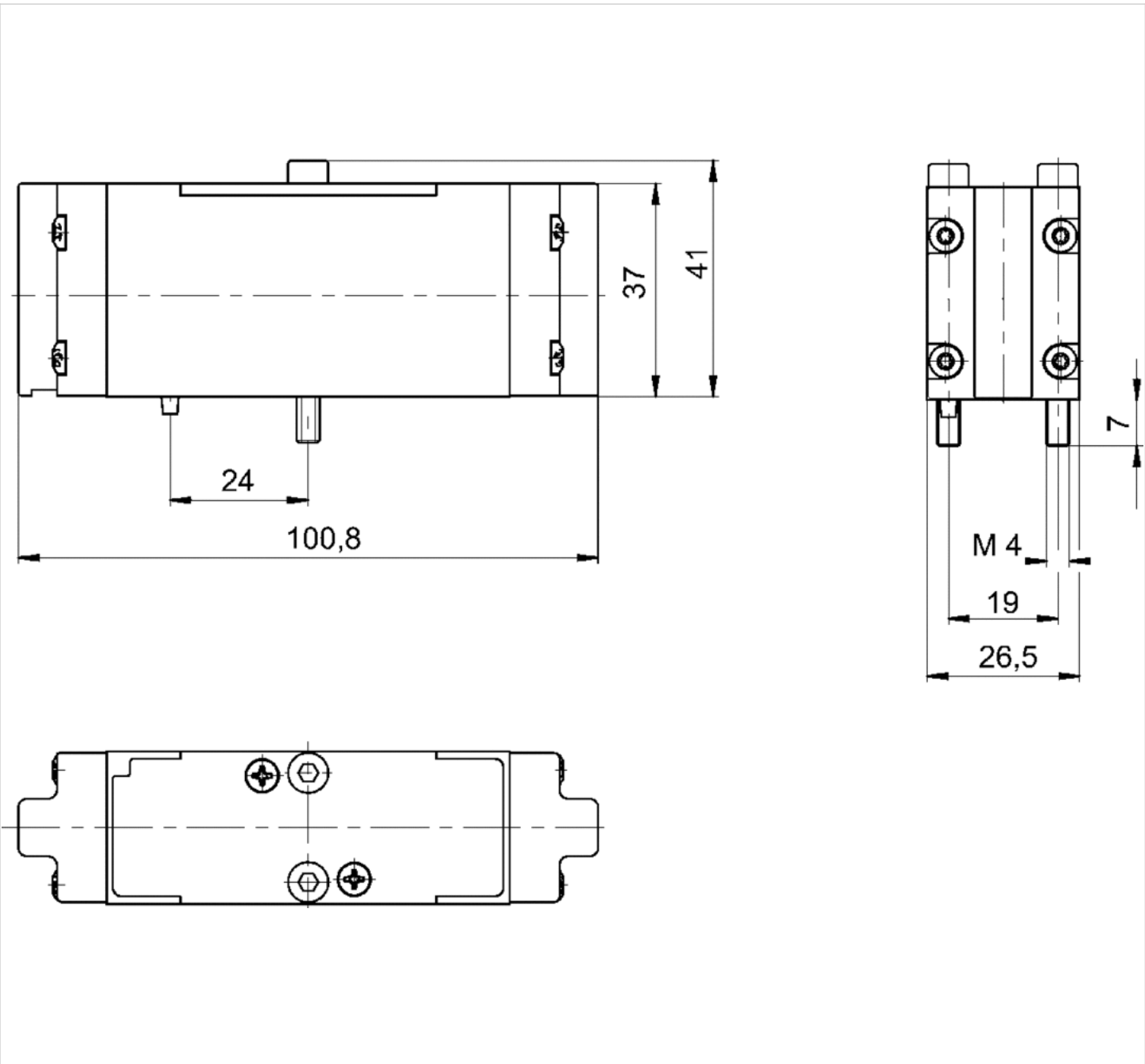
Use only the approved oils from AVENTICS. Further information can be found in the “Technical information” document (available in the MediaCentre).

Technical information

Housing	Polyamide Polyoxymethylene
Seals	Acrylonitrile butadiene rubber

Dimensions

Dimensions



Efficient pneumatic solutions, our program: cylinders and drives, valves and valve systems, air supply management



Visit us: [Emerson.com/Aventics](https://emerson.com/aventics)

Your local contact: [Emerson.com/contactus](https://emerson.com/contactus)



Emerson.com



Facebook.com/EmersonAutomationSolutions



LinkedIn.com/company/Emerson-Automation-Solutions



Twitter.com/EMR_Automation

An example configuration is depicted on the title page. The delivered product may thus vary from that in the illustration. Subject to change. This Document, as well as the data, specifications and other information set forth in it, are the exclusive property of AVENTICS GmbH. It may not be reproduced or given to third parties without its consent. Only use the AVENTICS products shown in industrial applications. Read the product documentation completely and carefully before using the product. Observe the applicable regulations and laws of the respective country. When integrating the product into applications, note the system manufacturer's specifications for safe use of the product. The data specified only serve to describe the product. No statements concerning a certain condition or suitability for a certain application can be derived from our information. The information given does not release the user from the obligation of own judgement and verification. It must be remembered that the products are subject to a natural process of wear and aging.

The Emerson logo is a trademark and service mark of Emerson Electric Co. Brand logotype are registered trademarks of one of the Emerson family of companies. All other marks are the property of their respective owners. © 2020 Emerson Electric Co. All rights reserved.
2020-12



CONSIDER IT SOLVED™