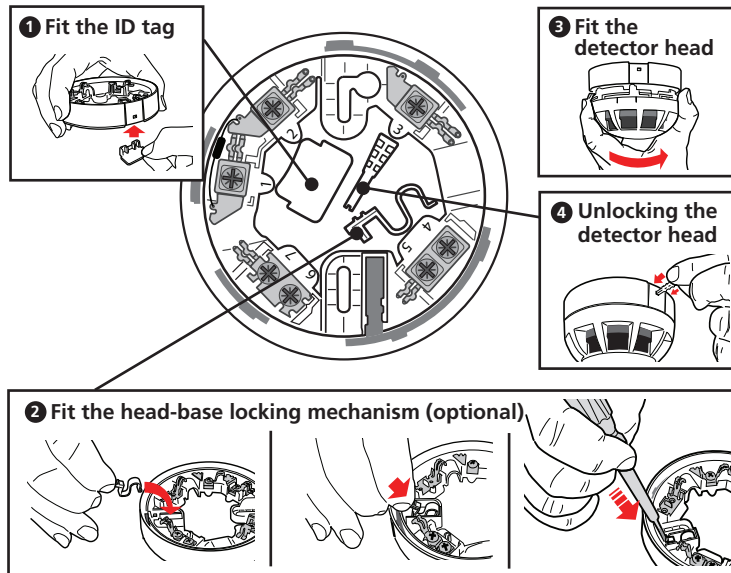
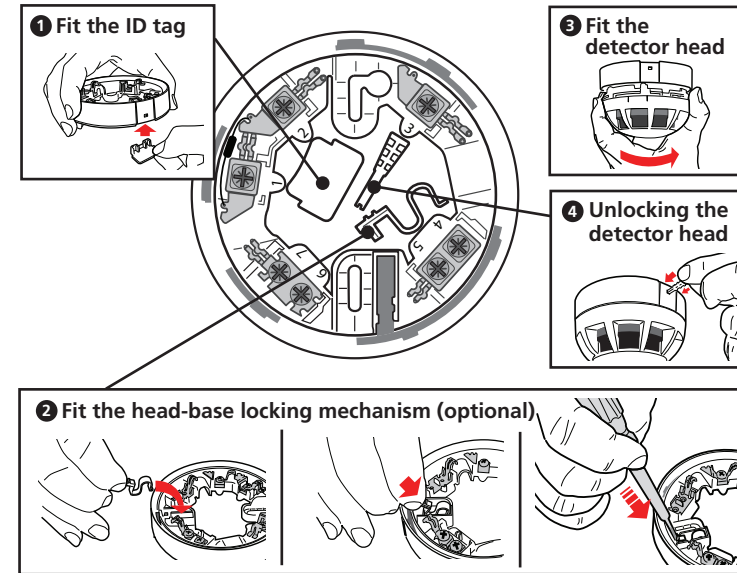


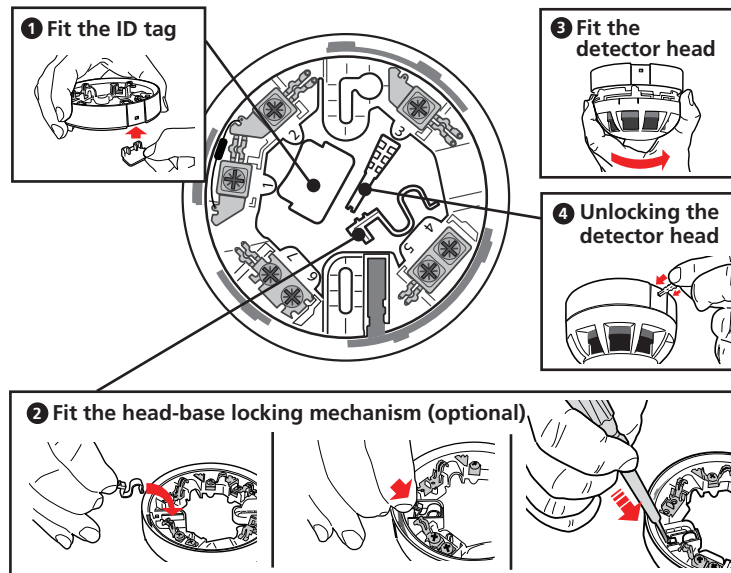
Remove the optional identification and security tags from the centre of the base and use as shown in steps 1, 2 & 4. See overleaf for wiring details.



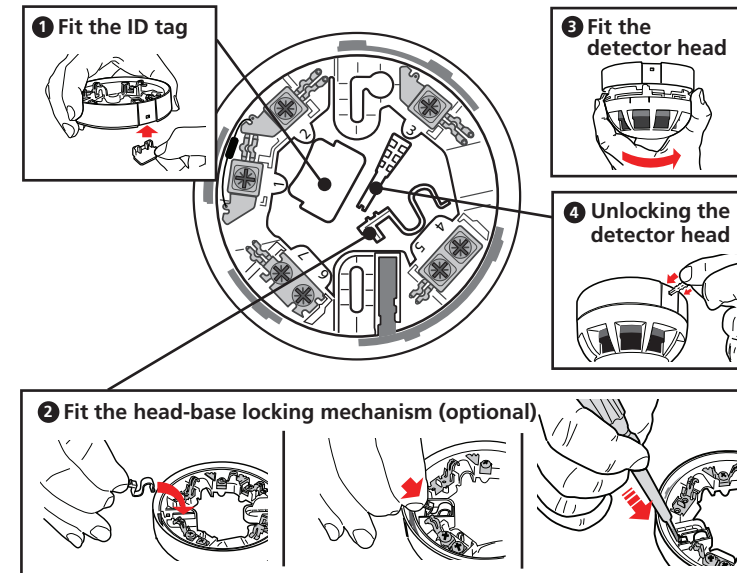
Remove the optional identification and security tags from the centre of the base and use as shown in steps 1, 2 & 4. See overleaf for wiring details.



Remove the optional identification and security tags from the centre of the base and use as shown in steps 1, 2 & 4. See overleaf for wiring details.

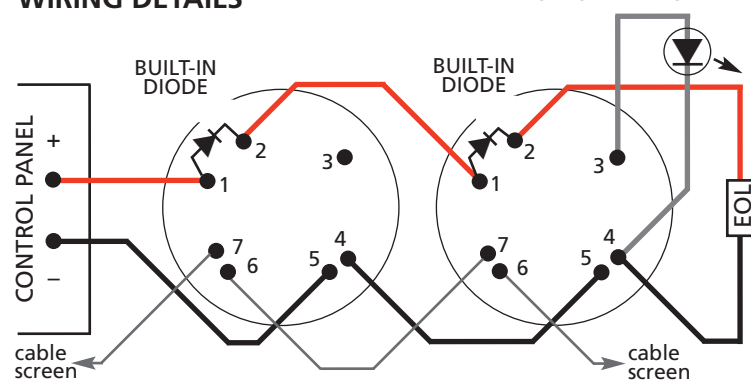


Remove the optional identification and security tags from the centre of the base and use as shown in steps 1, 2 & 4. See overleaf for wiring details.



WIRING DETAILS

OPTIONAL REMOTE LED



- Ensure positive IN is terminal 1 and positive OUT is terminal 2
- For optimum performance we recommend screened cables are used.
- Terminals can accept 0.4-2.5mm² wiring.
- Do not mount bases on uneven surfaces.
- Correct polarity must be observed.

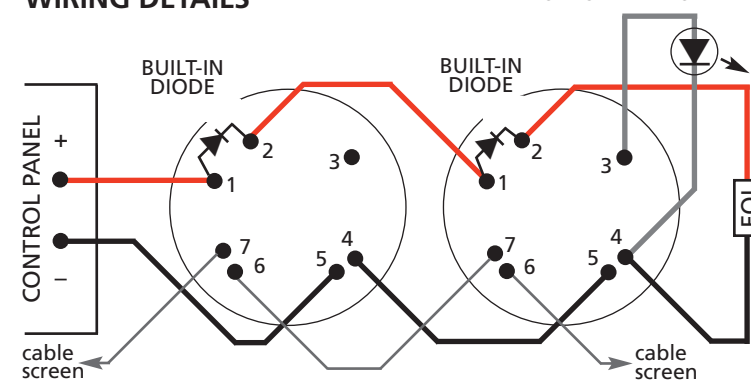
BASE CONNECTION DETAILS

Contact No.	Function
1	+Ve IN (diode connection)
2	+Ve OUT (diode connection)
3	Remote LED +Ve
4	0V
5	0V
6	Screen
7	Screen



WIRING DETAILS

OPTIONAL REMOTE LED



- Ensure positive IN is terminal 1 and positive OUT is terminal 2
- For optimum performance we recommend screened cables are used.
- Terminals can accept 0.4-2.5mm² wiring.
- Do not mount bases on uneven surfaces.
- Correct polarity must be observed.

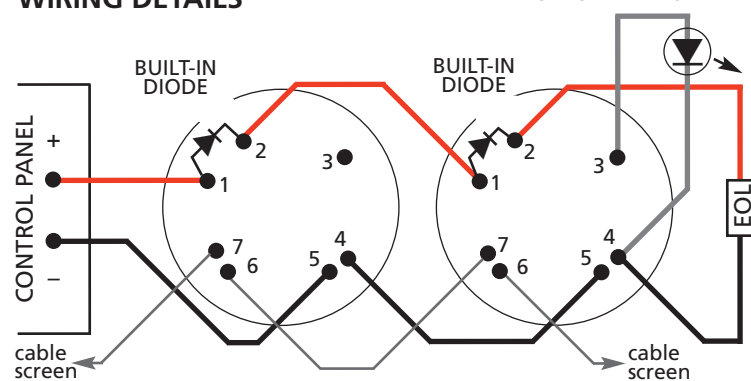
BASE CONNECTION DETAILS

Contact No.	Function
1	+Ve IN (diode connection)
2	+Ve OUT (diode connection)
3	Remote LED +Ve
4	0V
5	0V
6	Screen
7	Screen



WIRING DETAILS

OPTIONAL REMOTE LED



- Ensure positive IN is terminal 1 and positive OUT is terminal 2
- For optimum performance we recommend screened cables are used.
- Terminals can accept 0.4-2.5mm² wiring.
- Do not mount bases on uneven surfaces.
- Correct polarity must be observed.

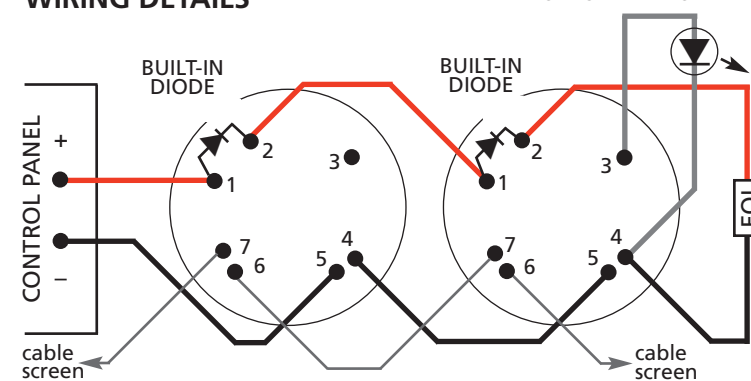
BASE CONNECTION DETAILS

Contact No.	Function
1	+Ve IN (diode connection)
2	+Ve OUT (diode connection)
3	Remote LED +Ve
4	0V
5	0V
6	Screen
7	Screen



WIRING DETAILS

OPTIONAL REMOTE LED



- Ensure positive IN is terminal 1 and positive OUT is terminal 2
- For optimum performance we recommend screened cables are used.
- Terminals can accept 0.4-2.5mm² wiring.
- Do not mount bases on uneven surfaces.
- Correct polarity must be observed.

BASE CONNECTION DETAILS

Contact No.	Function
1	+Ve IN (diode connection)
2	+Ve OUT (diode connection)
3	Remote LED +Ve
4	0V
5	0V
6	Screen
7	Screen

