



The Timken Company

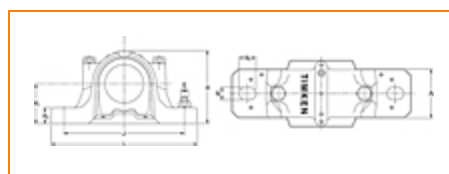
4500 Mt Pleasant St. NW

N. Canton, OH 44720

Phone: (234) 262-3000

E-Mail: CustomerCAD@timken.com • **Web site:** www.timken.com

Housing – Bearing – Seal SNT 528 - 23228 - VR228, SNT Cylindrical Bore Plummer Block Housed Units



[Types of Components](#) | [Housing](#) | [Bearing](#) | [Dimensions](#) | [Specifications](#)

Types of Components

Housing	SNT 528
Bearing	23228
Locating Rings (width x OD)	SR250X5
Seal Type	V-ring
Seal	VR228
End Cover ¹	EC528

Housing

Material	Cast Iron
Bolt Qty	2
Housing Mass	39 Kg

Bearing



Cage Type	EJ
C1 Dynamic Load Rating	1090
C0 Static Load Rating	1410
Max Oil Speed	1700
Max Grease Speed	1500

Dimensions



Shaft Diameter da	140 mm
Shaft Diameter db	155 mm
A	205.00 mm
A1	150 mm
G	M30
H	302 mm
H1	150.0 mm
H2	50.0 mm
Jmax	427 mm
Jmin	413 mm
J	420 mm
L	500 mm
N1	42 mm
N	35 mm

Specifications

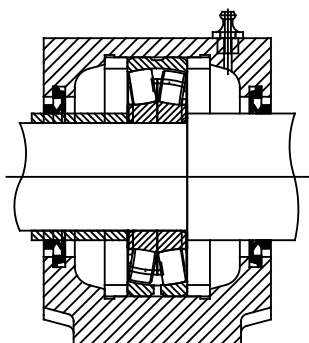
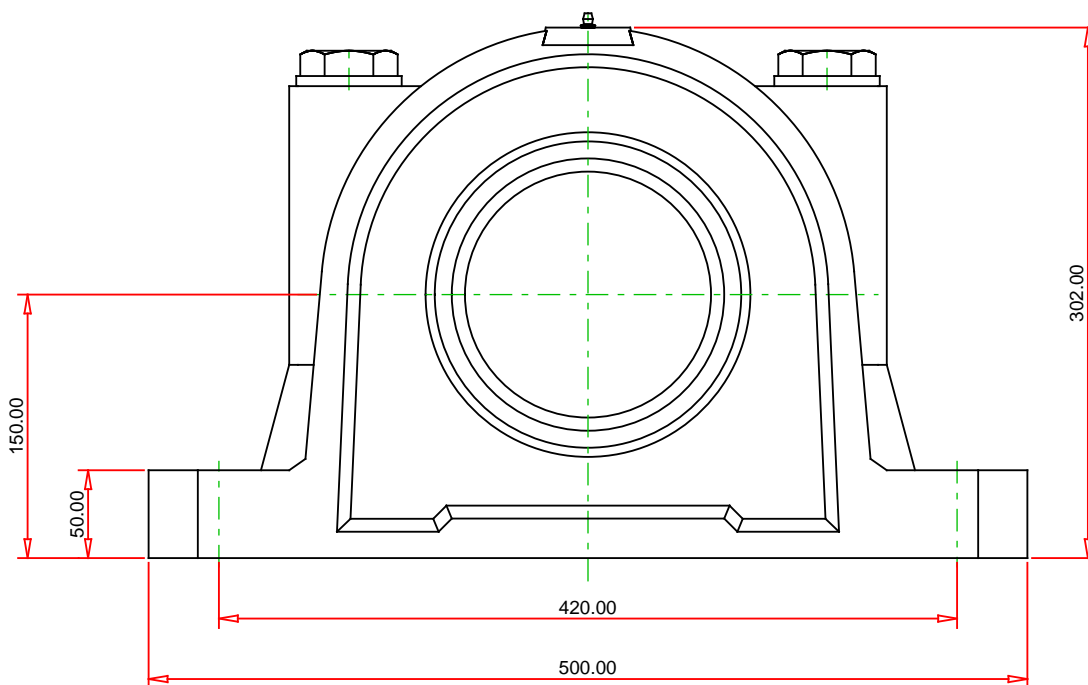
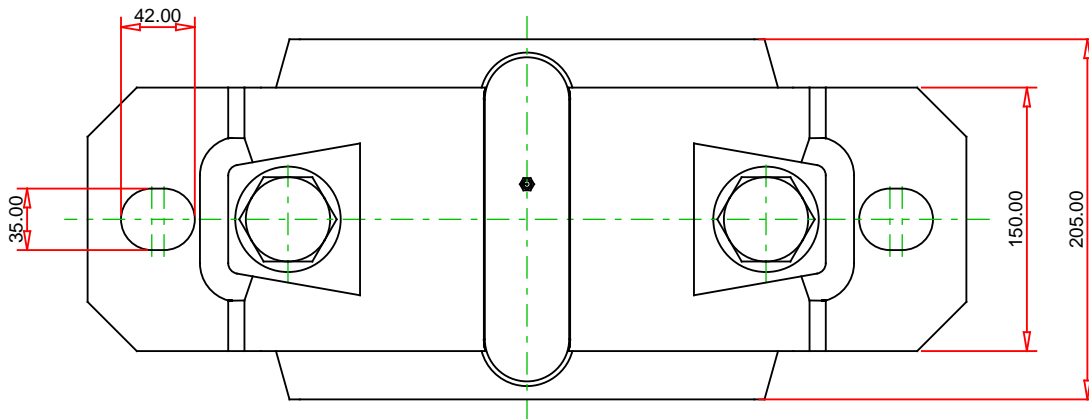
UPC Code

9999999999

Alternate Part Name

SNT528 - 23228 - VR228

¹ Two seals are required for a thru shaft application. One end cover can be used if application is not a thru shaft design. In this case, only one seal is required.



Note: Section View not to Scale

METRIC UNITS

Housing	SNT 528
Bearing	23228
Seal (Quantity 2)	VR228
Seal Type	V-ring
Locating Ring (Quantity 2)	SR250X5

TIMKEN®

THE TIMKEN COMPANY
NORTH CANTON, OHIO USA

SNT 528 - 23228 - VR228 SNT Cylindrical Bore Plummer Block Housed Units

C1 Dynamic Load Rating (2 rows)	1090 kN
C0 Static Load Rating	1410 kN
Max Oil Speed	1700 RPM
Max Grease Speed	1500 RPM
Material	Cast Iron

Every reasonable effort has been made to ensure the accuracy of the information contained in this writing, but no liability is accepted for errors, omissions or for any other reason.

FOR DISCUSSION ONLY