

5 Port Solenoid Valve Body Ported Series VZ3000

How to Order

Body ported VZ3

Type of actuation 1 2 0 **Body option** 5 **Rated voltage** L **Electrical entry** **Light/Surge voltage suppressor** **Manual override** **4(A)/2(B) port size** M5 **Option**

Type of actuation

1 2 position single

2 2 position double

3 3 position closed center

4 3 position exhaust center

5 3 position pressure center

Body option

0: Individual exhaust for the pilot valve

3: Common exhaust type for main and pilot valve

Rated voltage

1	100 VAC, 50/60 Hz
2	200 VAC, 50/60 Hz
3*	110 VAC, 50/60 Hz
4*	220 VAC, 50/60 Hz
5*	24 VDC
6	12 VDC
9*	Other

* Option

Option

F: With foot bracket (2 position single type only)

U: With silencer

K: With foot bracket and silencer (2 position single only)

Note) The bracket and silencer are not assembled.

4(A), 2(B) port size

M5	M5 x 0.8
C4	One-touch fitting for ø4
C6	One-touch fitting for ø6

Note) 1(P), 5(R1), 3(R2) port: M5 x 0.8

Manual override

Nil: Non-locking push type

C: Locking type C (Manual)

B: Locking type B (Slotted)

Electrical entry

Grommet	L plug connector	M plug connector	DIN terminal
G: Lead wire length 300 mm	L: With lead wire (Length 300 mm)	M: With lead wire (Length 300 mm)	D: With connector
H: Lead wire length 600 mm	LN: Without lead wire	MN: Without lead wire	DO: Without connector
	LO: Without connector	MO: Without connector	

Light/Surge voltage suppressor

Nil	None
Z*	With light/surge voltage suppressor
S	With surge voltage suppressor

* Not available for "GZ", "HZ" and "DOZ"

VK

VZ

VF

VFR

VP4

VZS

VFS

VS4

VQ7

EVS

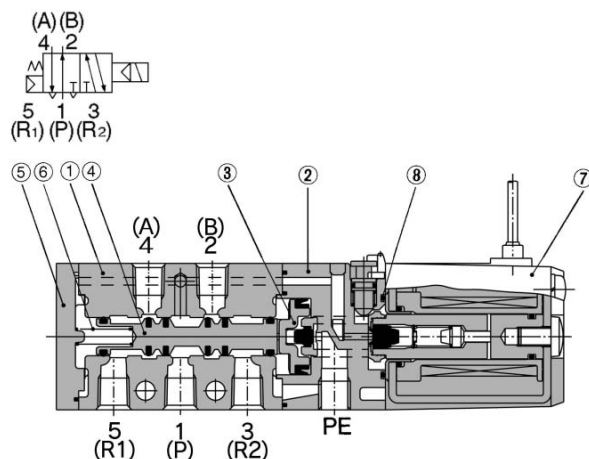
VFN

* Type "LN", "MN": With 2 sockets.

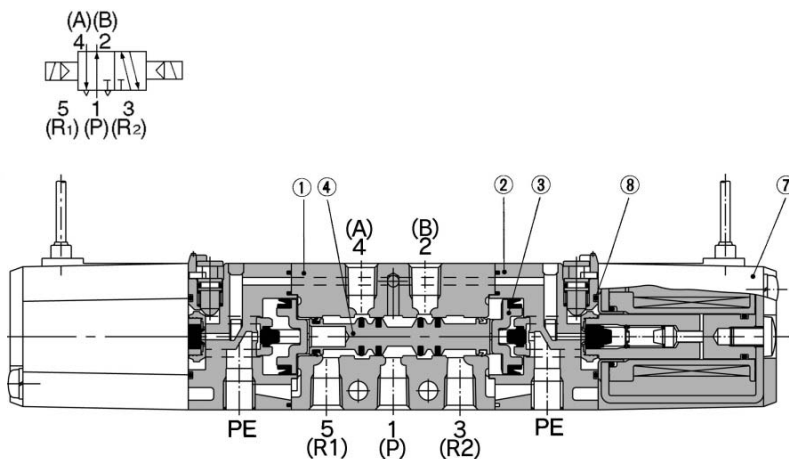
Series VZ3000

Construction

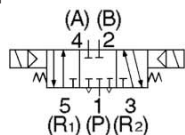
2 position single



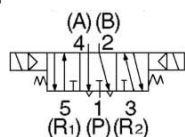
2 position double



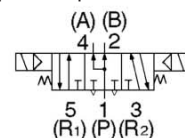
3 position closed center



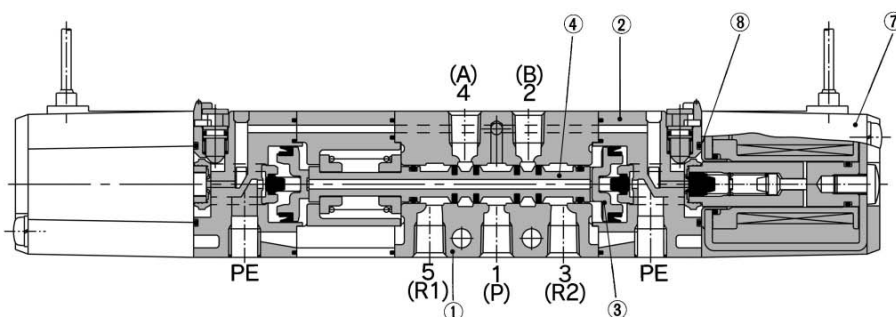
3 position exhaust center



3 position pressure center



3 position closed center/exhaust center/pressure center



(This figure shows a closed center type.)

Component Parts

No.	Description	Material	Note
①	Body	Aluminum die-casted	Platinum silver
②	Piston plate	Resin	Black
③	Piston	Resin	
④	Spool valve	Aluminum, HNBR	
⑤	End cover	Resin	
⑥	Spool spring	Stainless steel	

Replacement Parts

No.	Description	Material	Part no.	Note
⑦	Solenoid assembly	Epoxy/Stainless steel	DXT170-C-□□□	
⑧	O-ring	NBR	13 x 11 x 1	Common with Series VZ ₅ 000