

Speed Controller: Standard Type In-line Push Locking Type

AS Series

RoHS

Lock speed setting, with the touch of a button

It can be locked only by pushing the handle after adjustment.

Convenient opening indication scale

The opening indication scale for the needle valve is provided on the handle to facilitate speed adjustments.

Easy speed control at low flow volume ranges

Possible to control the mass velocity

Constant handle constructed of metal to withstand heavy usage

In addition to the standard handle made of resin, a heavy-duty metal handle is also available.

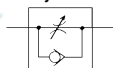
Retainer prevents an accidental loss of needle



Resin handle

Metal handle

Symbol



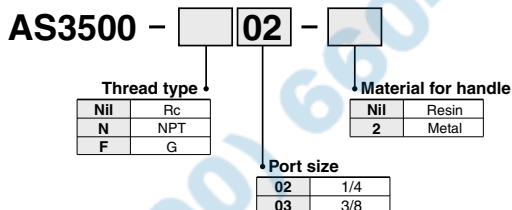
Caution

- Be sure to read this before handling the products.
- Refer to back page 50 for Safety Instructions and pages 543 to 546 for Flow Control Equipment Precautions.

Model/Specifications

Specifications	Model	AS3500-02	AS3500-03
	Resin handle Metal handle	AS3500-02-2	AS3500-03-2
Port size		1/4	3/8
Fluid		Air	
Proof pressure		1.5 MPa	
Max. operating pressure		1 MPa	
Min. operating pressure		0.05 MPa	
Ambient and fluid temperature		-5 to 60°C (No freezing)	
Weight		130 g (Metallic handle: 140 g)	
Free flow	Flow rate (L/min (ANR))	810	
	Sonic conductance dm ³ /(s·bar)	2.3	
	Critical pressure ratio	0.35	
Controlled flow	Flow rate (L/min (ANR))	810	
	Sonic conductance dm ³ /(s·bar)	2.3	
	Critical pressure ratio	0.2	

How to Order



Needle Valve/ Flow Rate Characteristics

(Note) The flow rate characteristics are representative values.

AS3500

