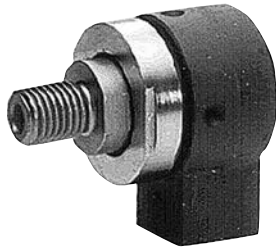


Pneumatic connection technologies ► Rotary joints

Rotary joint

► number of controlled lines: 1



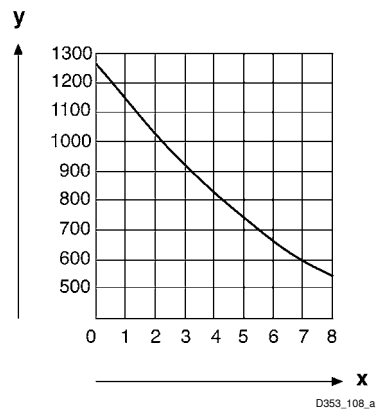
3531-081

Working pressure min./max.
Medium temperature min./max.
Medium
Speed max.

See table below
-25 °C / +40 °C
See table below
See table below

	Compressed air connection	Rotary joint	Working pressure min./max.	Medium	Speed max.	Weight	Fig.	Part No.
			[bar]		[1/min]	[kg]		
	M14x1,5	M16, right	0 / 8	Compressed air	1270	0.33	Fig. 1	3531080010
		M16, left	0 / 8	Compressed air	1270		Fig. 1	3531080030
		M16, right	0 / 8	Water	1270		Fig. 1	3531080040
		M16, right	-0.95 / 8	Compressed air	1100		Fig. 2	3531080020

Diagram

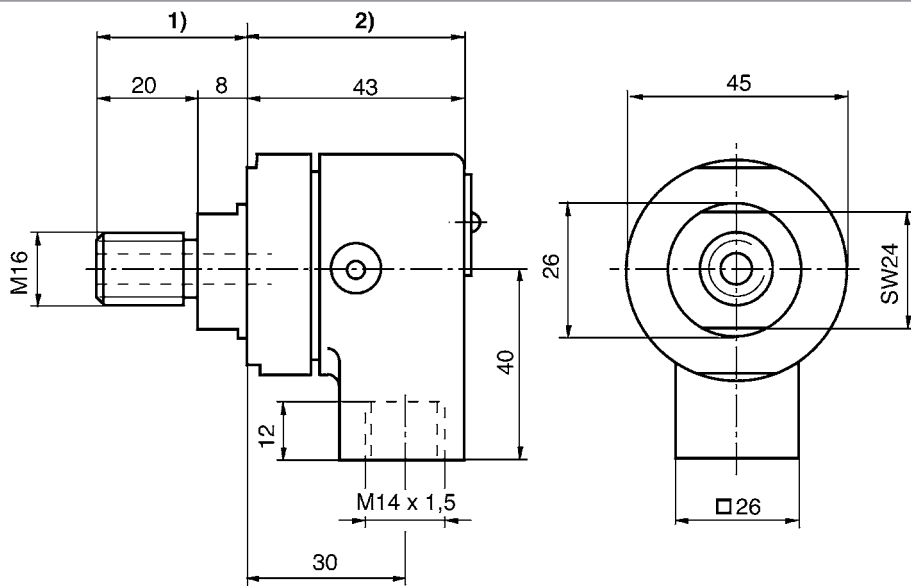


The diagram is valid at max. 20 °C ambient temperature. x: Working pressure p [bar] y: Speed n [rpm]

Rotary joint

► number of controlled lines: 1

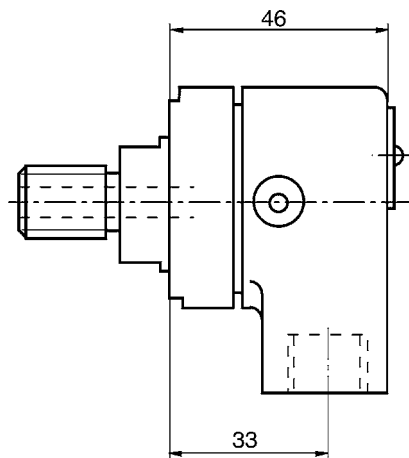
Fig. 1



D353_108_c

1) rotor 2) stator

Fig. 2



D353_108_b