



The Timken Company

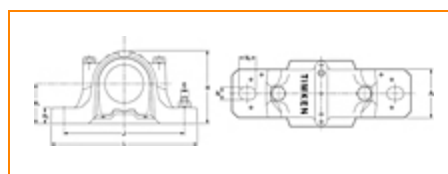
4500 Mt Pleasant St. NW

N. Canton, OH 44720

Phone: (234) 262-3000

E-Mail: CustomerCAD@timken.com • **Web site:** www.timken.com

Housing – Bearing – Seal SNT 526 - 23226K - LO526, SNT Taper Bore Plummer Block Housed Units



[Types of Components](#) | [Housing](#) | [Bearing](#) | [Dimensions](#) | [Specifications](#)

Types of Components

Housing	SNT 526
Bearing	23226K
Locating Rings (width x OD)	SR230X5
Seal Type	Labyrinth
Seal	LO526
Adapter Sleeve ¹	H2326
Locknut	KM26
Lockwasher	MB26
End Cover ²	EC526

Housing

Material	Cast Iron
Housing Mass	34.0 Kg
Bolt Qty	2

Bearing

Cage Type	EJ
C1 Dynamic Load Rating	915
C0 Static Load Rating	1170
Max Oil Speed	1900
Max Grease Speed	1700

Dimensions

Shaft Diameter d	115 mm
A	190.00 mm
A1	130 mm
A2	208 mm
G	M24
H	290.00 mm
H1	150.0 mm
H2	50.0 mm
J	380.00 mm
Jmax	387 mm
Jmin	373 mm
L	445 mm

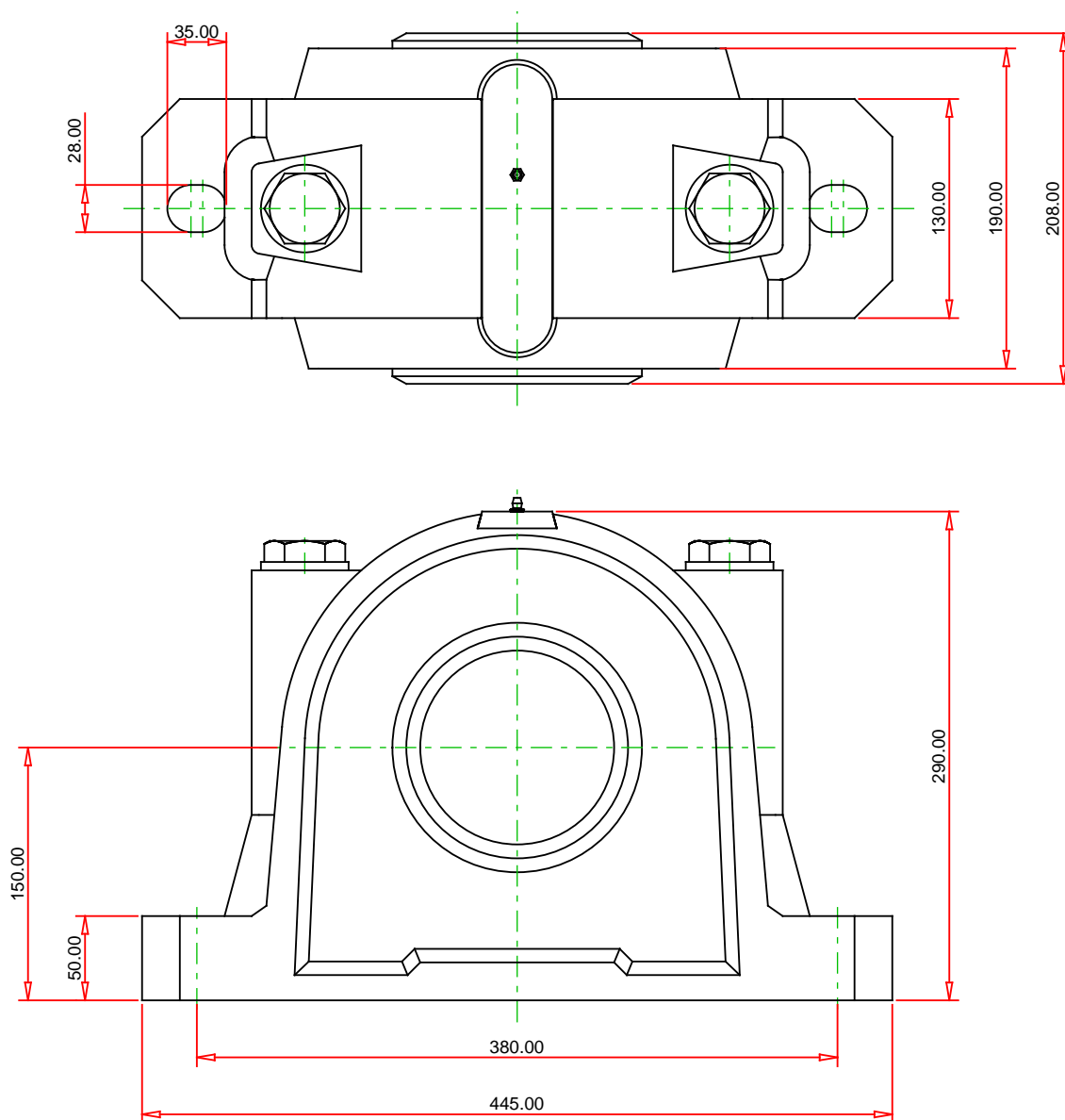
N	28 mm
N1	35.00 mm

Specifications

UPC Code	999999999
Alternate Part Name	SNT526 - 23226K - LO526

¹ Purchase the Adapter Sleeve separately

² Two seals are required for a thru shaft application. One end cover can be used if application is not a thru shaft design. In this case, only one seal is required.



Note: Section View not to Scale

METRIC UNITS

Housing
Bearing
Seal (Quantity 2)
Seal Type
Locating Ring (Quantity 2)
Adapter Sleeve
(includes 1 sleeve, 1 locknut
and 1 lockwasher)

SNT 526
23226K
LO526
Labyrinth
SR230X5
H2326

TIMKEN®

THE TIMKEN COMPANY
NORTH CANTON, OHIO USA

SNT 526 - 23226K - LO526
SNT Taper Bore Plummer Block Housing Units

C1 Dynamic Load Rating (2 rows)	915 kN
C0 Static Load Rating	1170 kN
Max Oil Speed	1900 RPM
Max Grease Speed	1700 RPM
Material	Cast Iron

Every reasonable effort has been made to ensure the accuracy of the information contained in this writing, but no liability is accepted for errors, omissions or for any other reason.

FOR DISCUSSION ONLY