

Double solenoid valve

with manual override and mounting bolts,
without sub-base

Mid position closed:

Type MVH-5/3G-D-1-C

Mid position exhausted:

Type MVH-5/3E-D-1-C

Mid position supplied with air:

Type MVH-5/3B-D-1-C

with auxiliary pilot air connection

Mid position closed:

Type MVH-5/3G-D-1-S-C

Mid position exhausted:

Type MVH-5/3E-D-1-S-C

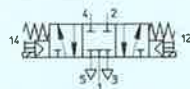
Mid position supplied with air:

Type MVH-5/3B-D-1-S-C

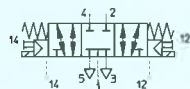
Function:

Mid position closed:

MVH-5/3G-D-1-C

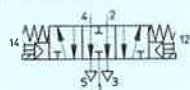


MVH-5/3G-D-1-S-C



Mid position exhausted:

MVH-5/3E-D-1-C

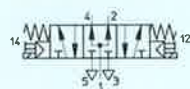


MVH-5/3E-D-1-S-C



Mid position supplied with air:

MVH-5/3B-D-1-C



MVH-5/3B-D-1-S-C



This valve series has a Festo sealing ring cartridge which guarantees extremely long service life.

Type MVH-5/3...-D-1-S-C

The separate auxiliary control air connection means that this valve can be used for low operating pressures and foreign gases.

The valve is brought into the appropriate switching position by electrical actuation of the solenoid coils 12 or 14.

Valves with the following functions:

Mid position closed: Double acting cylinders can be held within the range of the stroke.

Mid position exhausted: The cylinder piston can be moved without pressure.

Mid position supplied with air: The cylinder piston is held firmly under pressure.

Accessories:

Socket and accessories see sheets 2.594, 2.598.

For valve sub-bases with hole pattern to ISO 5599/1, Size 1, see sheet 2.970.

Intermediate throttling plate see sheet 2.982.

Intermediate plate with pressure regulator see sheet 2.985.

- 1 (P) = Supply port
- 4, 2 (A, B) = Working or outlet lines
- 5, 3 (R, S) = Exhausts
- 12, 14 (Pz) = Auxiliary pilot air

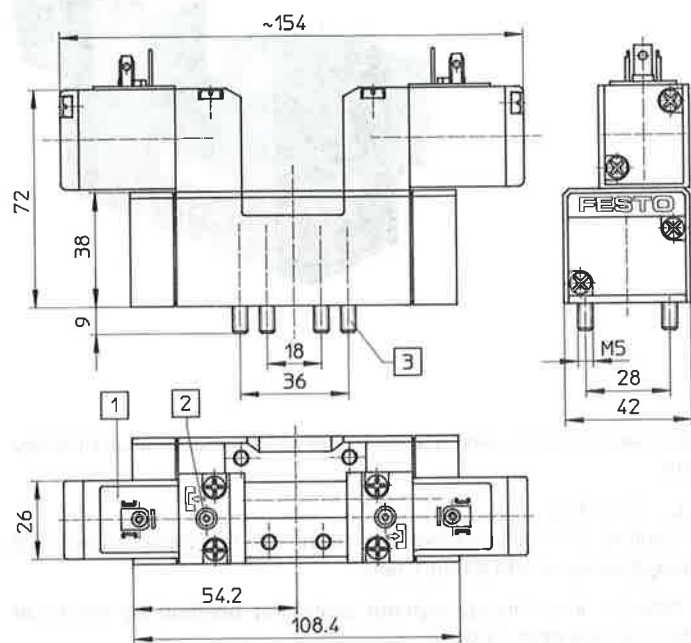
Order code	Part No./Type	150 987 MVH-5/3G-D-1-C	152 569 MVH-5/3G-D-1-S-C
		150 988 MVH-5/3E-D-1-C	152 570 MVH-5/3E-D-1-S-C
		150 989 MVH-5/3B-D-1-C	152 571 MVH-5/3B-D-1-S-C
Medium		Compressed air, filtered (lubricated or unlubricated) or vacuum*	
Design		Spool valve with sealing ring cartridge	
Mounting		On sub-base to ISO 5599/1	
Connection		G 1/4	
Nominal size		8 mm	
Standard nominal flow rate (1 → 2, 1 → 4)		1200 l/min	
Operating pressure range		3 to 10 bar	-0.9 to 16 bar
Control pressure range		—	3 to 10 bar
Response time at 6 bar	On/Off	G: 22/45 ms; E: 20/45 ms; B: 21/45 ms	
Ambient temperature		-5 to +50 °C	
Medium temperature		-5 to +50 °C	
Materials		Housing: Die-cast aluminium, POM; seals: Perbunan	
Weight		0.650 kg	
DC voltage		24 V	
Power consumption		2.5 W	
Duty cycle		100 %	
Degree of protection		IP 65 (DIN 40 050)	

* Type MVH-5/3...-D-1-S-C is suitable for vacuum operation.

Solenoid actuated valves

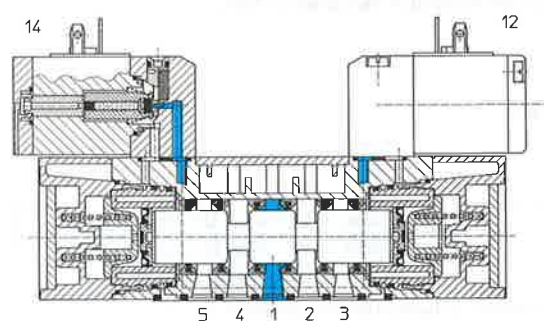
5/3-way valves, size 1 (G 1/4) with hole pattern to ISO 5599/1

Type MVH-5/3...-D-1-C
MVH-5/3...-D-1-S-C



- 1 Connection for socket to DIN 43 650, design B
- 2 Manual override
- 3 Captive screws

Example: Type MVH-5/3G-D-1-C



- 1 (P) = Supply port
- 4, 2 (A, B) = Working or outlet lines
- 5, 3 (R, S) = Exhausts
- 12, 14 (Pz) = Auxiliary pilot air