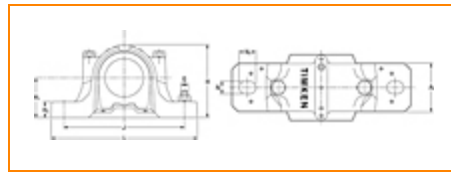




The Timken Company
 4500 Mt Pleasant St. NW
 N. Canton, OH 44720
Phone: (234) 262-3000

E-Mail: CustomerCAD@timken.com • **Web site:** www.timken.com

Housing – Bearing – Seal SNT 524-620 - 22224 - VR224, SNT Cylindrical Bore Plummer Block Housed Units



[Types of Components](#) | [Housing](#) | [Bearing](#) | [Dimensions](#) | [Specifications](#)

Types of Components

Housing	SNT 524-620
Bearing	22224
Locating Rings (width x OD)	SR215X14
Seal Type	V-ring
Seal	VR224
End Cover ¹	EC524-620

Housing

Material	Cast Iron
Bolt Qty	2
Housing Mass	26.5 Kg

Bearing



Cage Type	EJ
C1 Dynamic Load Rating	647
C0 Static Load Rating	772
Max Oil Speed	3200
Max Grease Speed	2600

Dimensions



Shaft Diameter da	120 mm
Shaft Diameter db	135 mm
A	185.00 mm
A1	120 mm
G	M24
H	271 mm
H1	140.0 mm
H2	45.0 mm
Jmax	356 mm
Jmin	344 mm
J	350.00 mm
L	410.00 mm
N1	32.00 mm
N	26 mm

Specifications

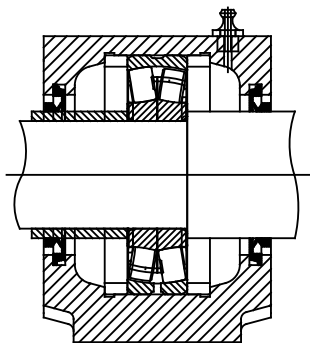
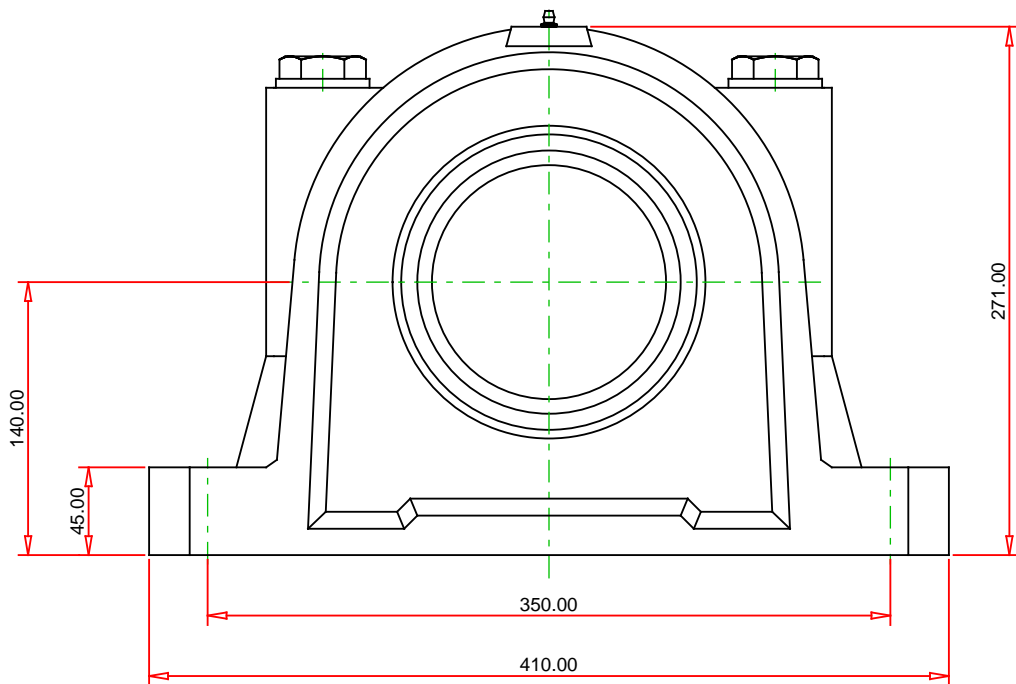
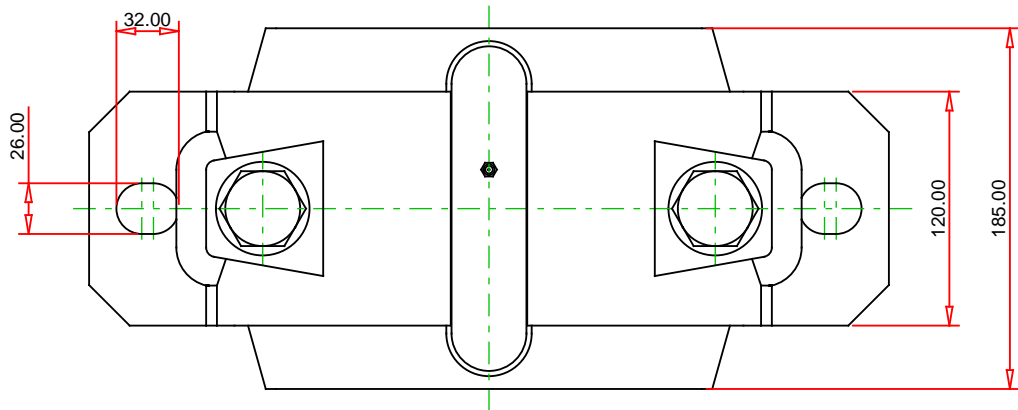
UPC Code

9999999999

Alternate Part Name

SNT524-620 - 22224 - VR224

¹ Two seals are required for a thru shaft application. One end cover can be used if application is not a thru shaft design. In this case, only one seal is required.



Note: Section View not to Scale

METRIC UNITS

Housing SNT 524-620
 Bearing 22224
 Seal (Quantity 2) VR224
 Seal Type V-ring
 Locating Ring (Quantity 2) SR215X14

TIMKEN®

THE TIMKEN COMPANY
 NORTH CANTON, OHIO USA

SNT 524-620 - 22224 - VR224
 SNT Cylindrical Bore Plummer Block Housed Units

C1 Dynamic Load Rating (2 rows) 647 kN
 C0 Static Load Rating 772 kN
 Max Oil Speed 3200 RPM
 Max Grease Speed 2600 RPM
 Material Cast Iron

Every reasonable effort has been made to ensure the accuracy of the information contained in this writing, but no liability is accepted for errors, omissions or for any other reason.

FOR DISCUSSION ONLY