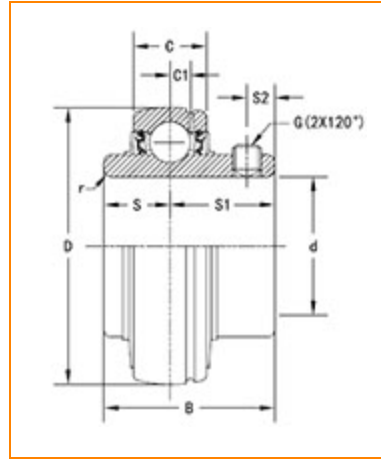




The Timken Company
 4500 Mt Pleasant St. NW
 N. Canton, OH 44720
Phone: (234) 262-3000

E-Mail: CustomerCAD@timken.com • **Web site:** www.timken.com

Part Number UC212, UC 200 Wide Inner Ring Ball Bearings - Set Screw Locking



[Specifications](#) | [Dimensions](#) | [Basic Load Ratings](#)

Specifications

Item #	UC212
Bore Type	Cylindrical bore
Bearing Type	Ball Bearing
Shaft Size d	60 mm
Weight	3.40 lb 1.50 Kg
Locking Style	Set Screw Locking

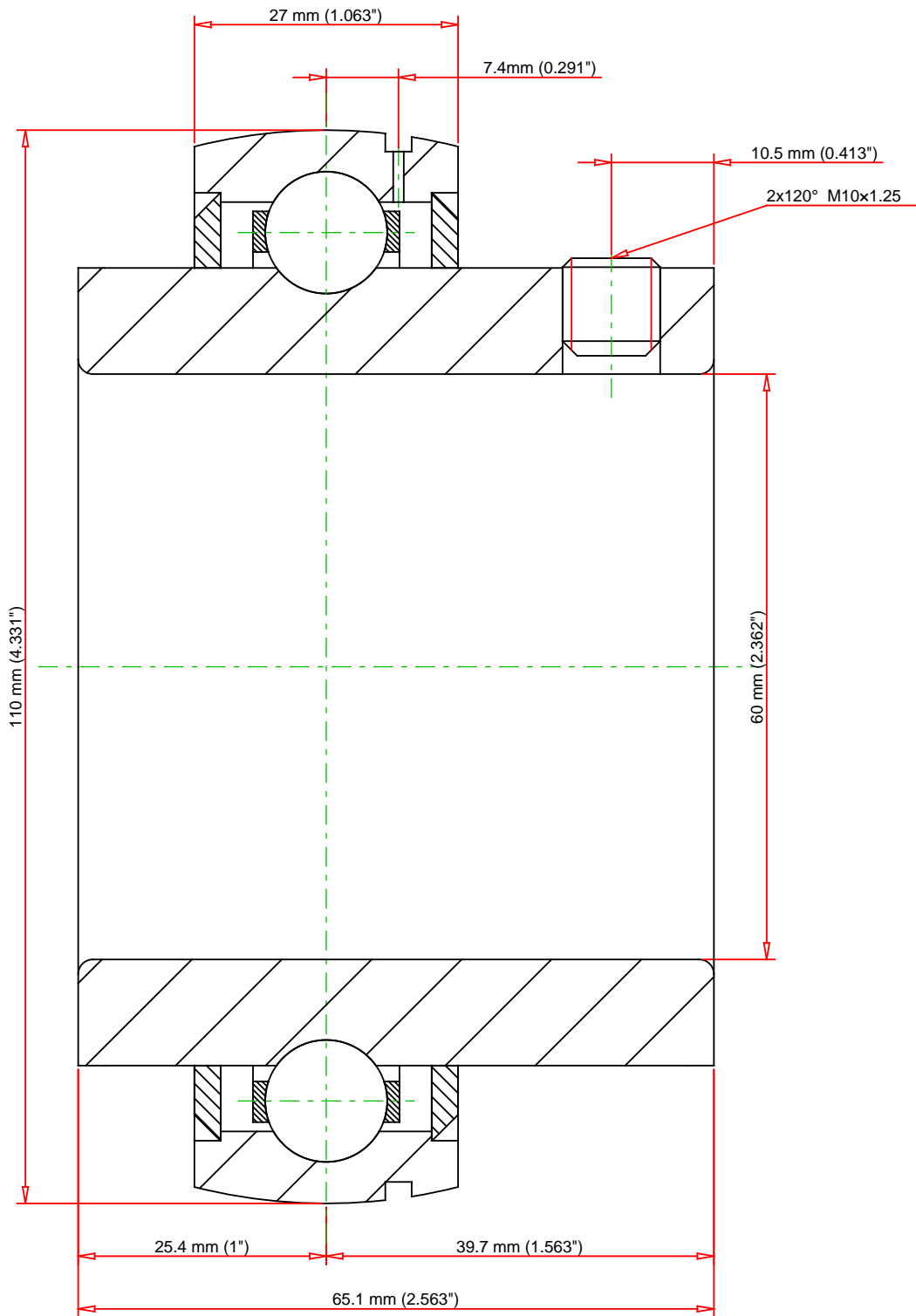
Dimensions

Outside Diameter D	110.000 mm 4.331 in
Outside Ring Width C	27.000 mm 1.063 in

	1.063 in
Radius r	1.5 mm 0.059 in
Groove Position C1	7.40 mm 0.291 in
Center of Bearing from End S	25.4 mm 1.000 in
Dimension S1	39.70 mm 1.563 in
Set Screw Distance S2	10.50 mm 0.413 in
Set Screw Size	M10×1.25
Number of Set Screws	2
Angle between Set Screws	120 °

Basic Load Ratings

Static Load Rating	8138 lbf 36200 N
Dynamic Load Rating	11780 lbf 52400 N



Weight		3.4 lb	1.5 kg	<div>TIMKEN®</div> <div>THE TIMKEN COMPANY</div> <div>NORTH CANTON, OHIO USA</div>	UC212			
					UC 200 Wide Inner Ring Ball Bearings - Set Screw Locking			
				Basic Load Ratings - C _r			11780 lbf	52400 N
				Load Ratings - C _{0r}			8138 lbf	36200 N
Every reasonable effort has been made to ensure the accuracy of the information contained in this writing, but no liability is accepted for errors, omissions or for any other reason.					FOR DISCUSSION ONLY			